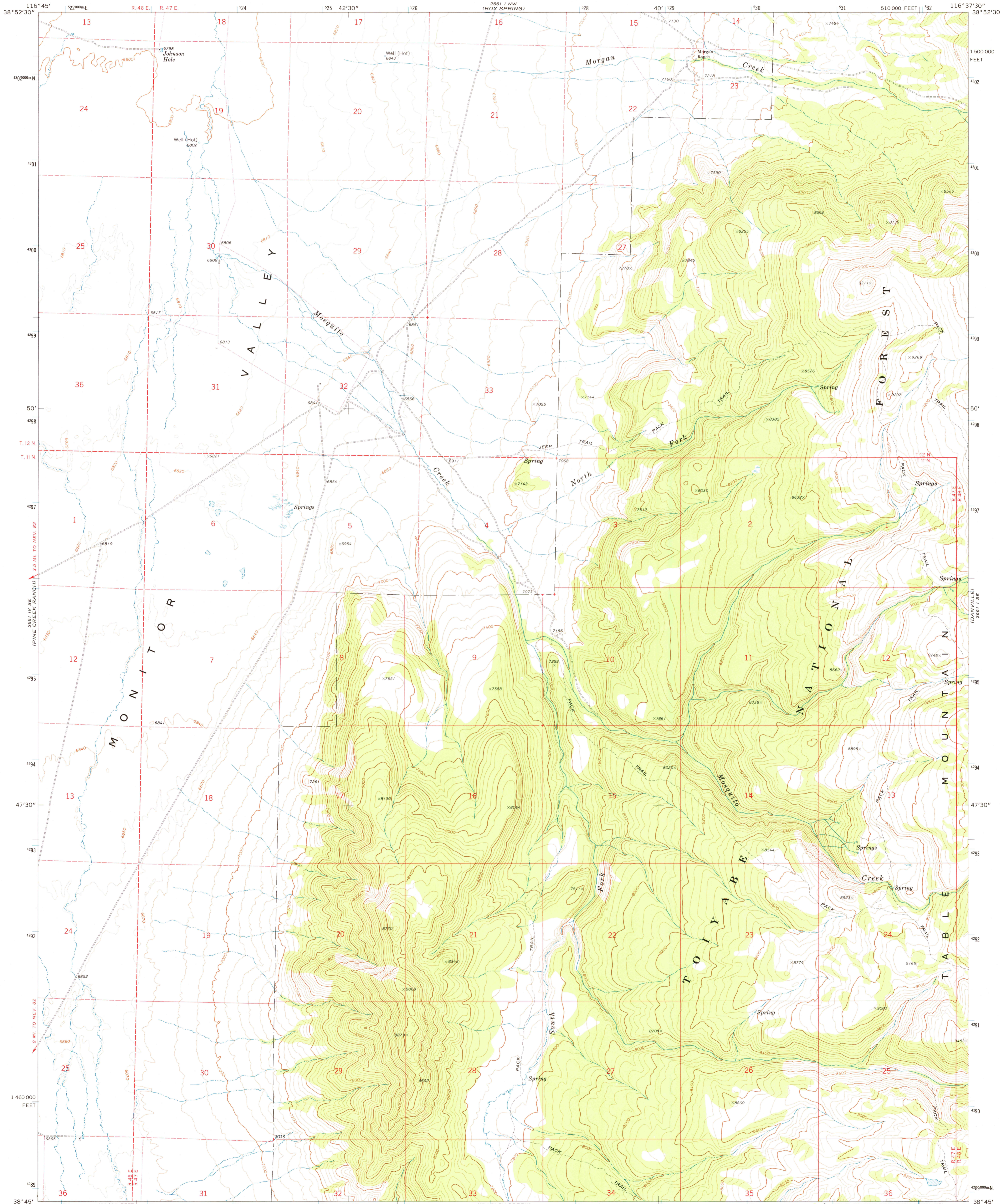
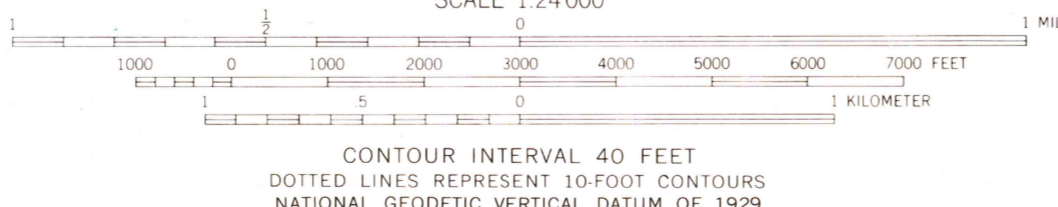
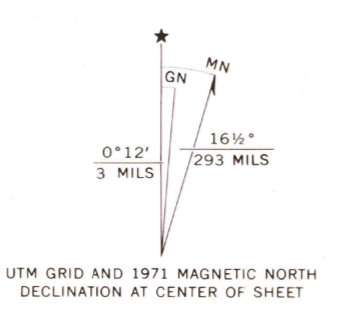


UNITED STATES
DEPARTMENT OF THE INTERIOR
GEOLOGICAL SURVEY

MOSQUITO CREEK QUADRANGLE
NEVADA—NYE CO.
7.5 MINUTE SERIES (TOPOGRAPHIC)



Mapped, edited, and published by the Geological Survey
Control by USGS and USC&GS
Topography by photogrammetric methods from aerial photographs taken 1967 and 1970. Field checked 1971
Projection and 10,000-foot grid ticks: Nevada coordinate system, central zone (transverse Mercator)
1000-meter Universal Transverse Mercator grid ticks, zone 11, shown in blue. 1927 North American datum
Fine red dashed lines indicate selected fence lines
Where omitted, land lines have not been established



ROAD CLASSIFICATION

Primary highway, hard surface	Light-duty road, hard or improved surface
Secondary highway, hard surface	Unimproved road
Interstate Route	U. S. Route
	State Route

THIS MAP COMPLIES WITH NATIONAL MAP ACCURACY STANDARDS
FOR SALE BY U. S. GEOLOGICAL SURVEY, DENVER, COLORADO 80225, OR RESTON, VIRGINIA 22092
A FOLDER DESCRIBING TOPOGRAPHIC MAPS AND SYMBOLS IS AVAILABLE ON REQUEST

USGS
Historical File
Topographic Division

MOSQUITO CREEK, NEV.
N3845-W11637.5/7.5

1971

AMS 2661 | SW—SERIES V896

38° 52' 30" N
116° 45' W
CORCORAN CANYON
2661 | NE

38° 52' 30" N
116° 37' 30" W
GOBBIN SUMMIT
2661 | NE

38° 45' N
116° 37' 30" W
GREEN MONSTER CANYON
2661 | NE