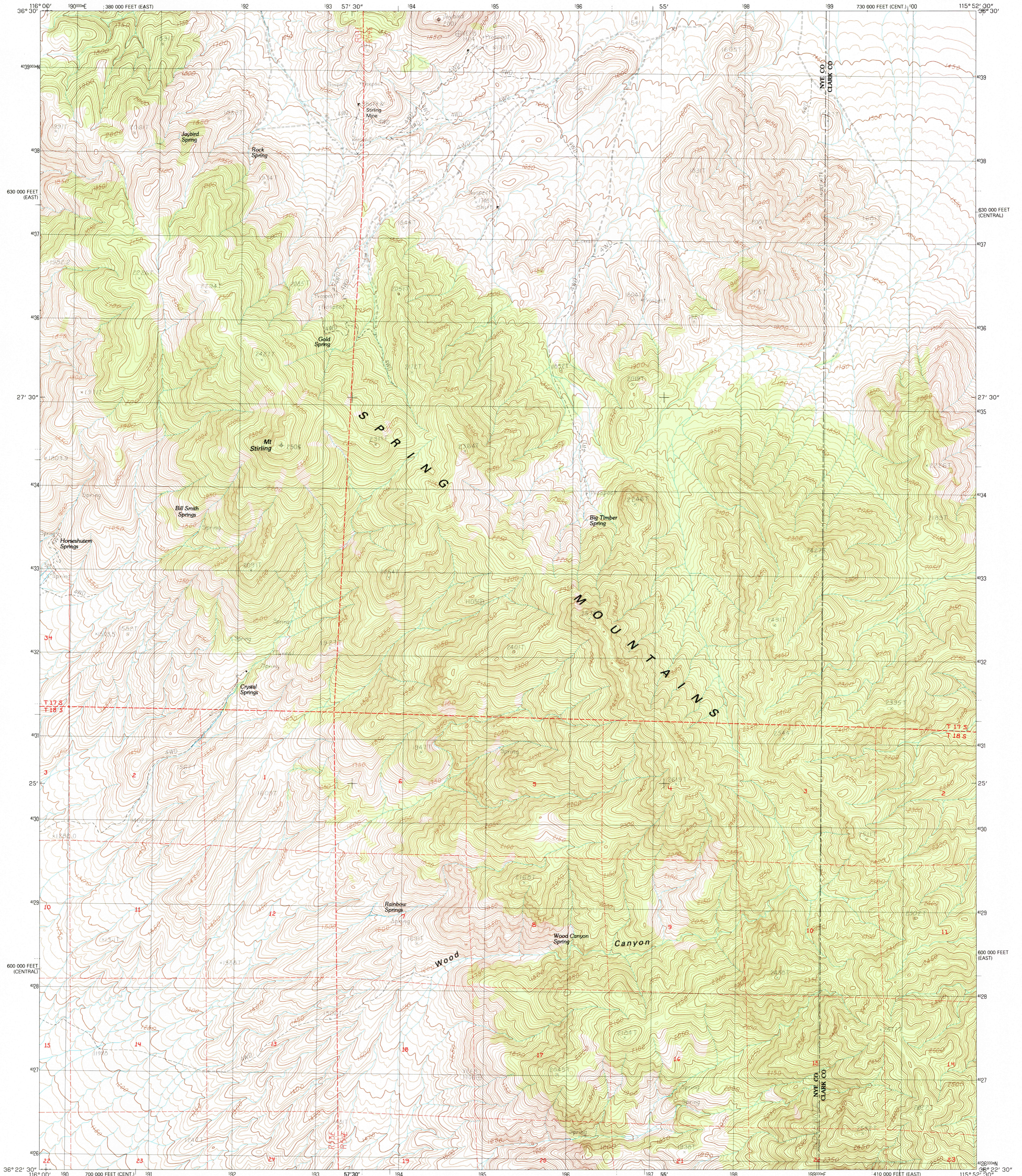


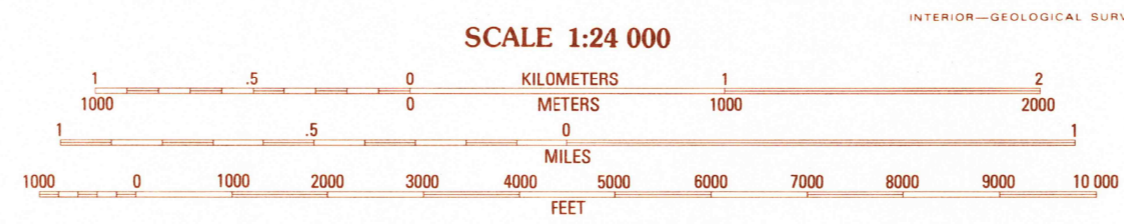
UNITED STATES
DEPARTMENT OF THE INTERIOR
GEOLOGICAL SURVEY

MT. STIRLING QUADRANGLE
NEVADA
7.5 MINUTE SERIES (TOPOGRAPHIC)



PRODUCED BY THE UNITED STATES GEOLOGICAL SURVEY
CONTROL BY USGS, NOS/NOAA
COMPILED FROM AERIAL PHOTOGRAPHS TAKEN 1976, 1980
FIELD CHECKED 1981. MAP EDITED
PROJECTION UNIVERSAL TRANSVERSE MERCATOR
GRID: 1000-METER UNIVERSAL TRANSVERSE MERCATOR, ZONE 11
10,000-FOOT STATE GRID TICKS, NEVADA, CENTRAL AND EAST ZONES
UTM GRID DECLINATION 0°38' EAST
1980 MAGNETIC NORTH DECLINATION
VERTICAL DATUM, NATIONAL GEODETIC VERTICAL DATUM OF 1929
HORIZONTAL DATUM, 1927 NORTH AMERICAN DATUM
To place on the predicted North American Datum of 1983,
move the projection lines as shown by dashed corner ticks
(7 meters north / 77 meters east)
There may be private inholdings within the boundaries of any
Federal and State Reservations shown on this map
Certain land lines are omitted because of insufficient data

PROVISIONAL MAP
Produced from original
manuscript drawings. Informa-
tion shown as of date of
field check.



CONTOUR INTERVAL 10 METERS
CONTROL ELEVATIONS SHOWN TO THE NEAREST 0.1 METER
OTHER ELEVATIONS SHOWN TO THE NEAREST METER
To convert meters to feet multiply by 3.2808
To convert feet to meters multiply by 0.3048

THIS MAP COMPLIES WITH NATIONAL MAP ACCURACY STANDARDS
FOR SALE BY U.S. GEOLOGICAL SURVEY, DENVER COLORADO 80225, OR RESTON, VIRGINIA 22092

NEVADA

QUADRANGLE LOCATION

1	2	3	4	5	6	7	8
1 Point of Rocks	2 Navi Wash	3 Mercury SE	4 Mt. Schader	5 Willow Peak	6 Lost Chance Range	7 Horse Springs	8 Wheeler Well

ADJOINING 7.5 QUADRANGLE NAMES

CONTOURS AND ELEVATIONS IN METERS
ROAD LEGEND

Improved Road
Unimproved Road
Trail

Interstate Route
U.S. Route
State Route

MT. STIRLING, NEV.
PROVISIONAL EDITION 1984
36115-D8-TM-024

RETURN TO:
USGS AND HISTORICAL MAP ARCHIVES