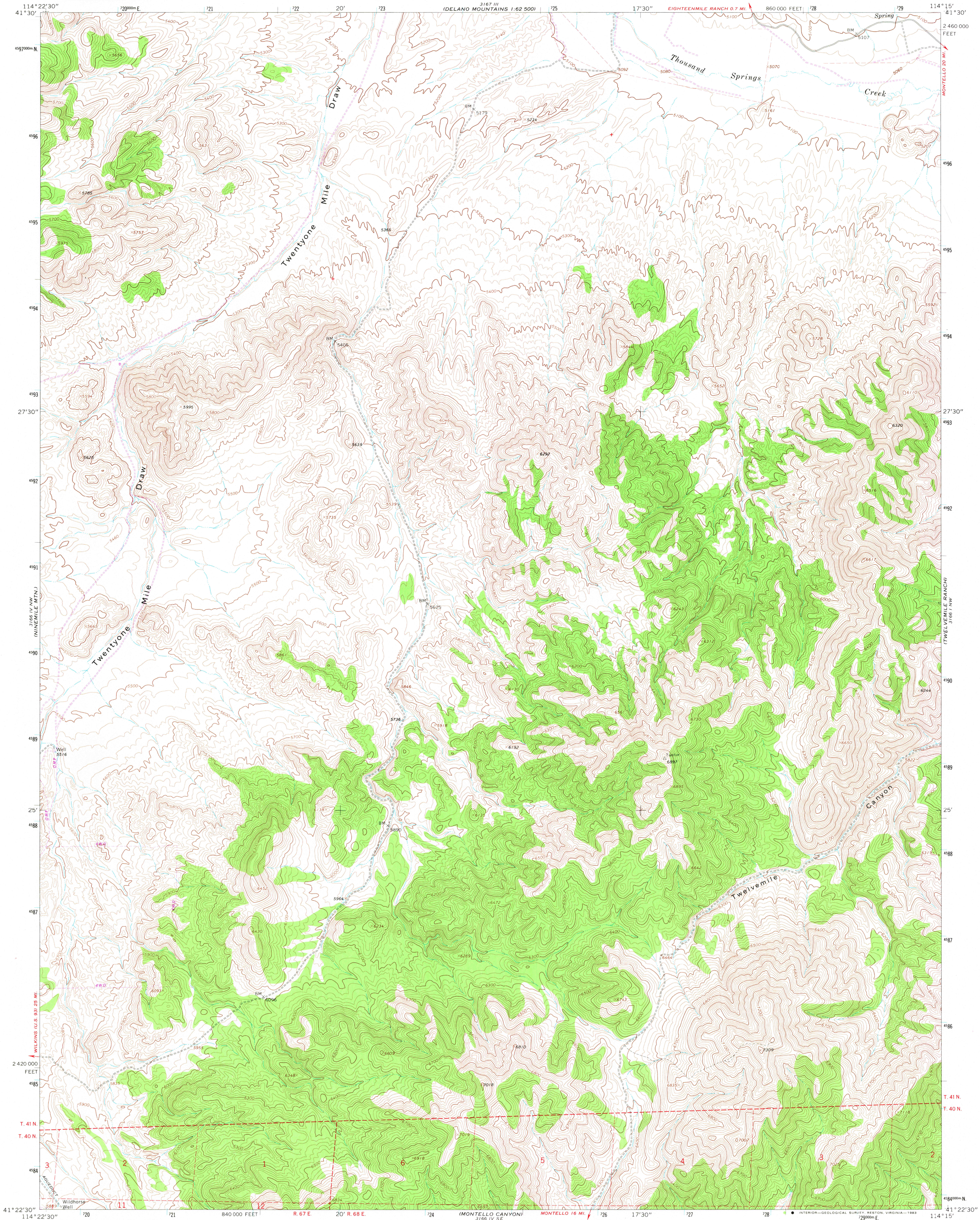
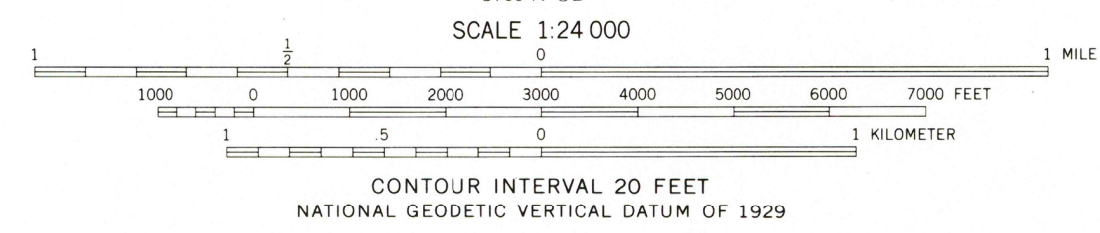
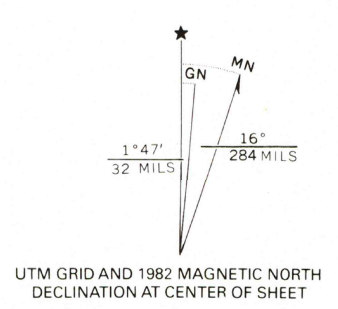


UNITED STATES  
DEPARTMENT OF THE INTERIOR  
GEOLOGICAL SURVEY

NINEMILE MTN. NE QUADRANGLE  
NEVADA—ELKO CO.  
7.5 MINUTE SERIES (TOPOGRAPHIC)



Mapped, edited, and published by the Geological Survey  
Control by USGS and NOS/NOAA  
Topography by photogrammetric methods from aerial  
photographs taken 1966. Field checked 1967  
Polyconic projection. 1927 North American datum  
10,000-foot grid based on Nevada coordinate system, east zone  
1000-meter Universal Transverse Mercator grid ticks,  
zone 11, shown in blue  
To place on the predicted North American Datum 1983,  
move the projection lines 12 meters north and  
72 meters east as shown by dashed corner ticks  
Fine red dashed lines indicate selected fence lines  
Where omitted, land lines have not been established



ROAD CLASSIFICATION  
Light-duty ——— Unimproved dirt - - - - -

THIS MAP COMPLIES WITH NATIONAL MAP ACCURACY STANDARDS  
FOR SALE BY U. S. GEOLOGICAL SURVEY, DENVER, COLORADO 80225, OR RESTON, VIRGINIA 22092  
A FOLDER DESCRIBING TOPOGRAPHIC MAPS AND SYMBOLS IS AVAILABLE ON REQUEST

Revision shown in purple compiled from aerial photographs  
taken 1980 and other source data. This information not  
field checked. Map edited 1982

NINEMILE MTN. NE, NEV.  
N4122.5—W11415/7.5  
1967  
PHOTOREVISED 1982  
DMA 3166 IV NE—SERIES V896

RETURN TO:  
USGS AND HISTORICAL MAP ARCHIVES