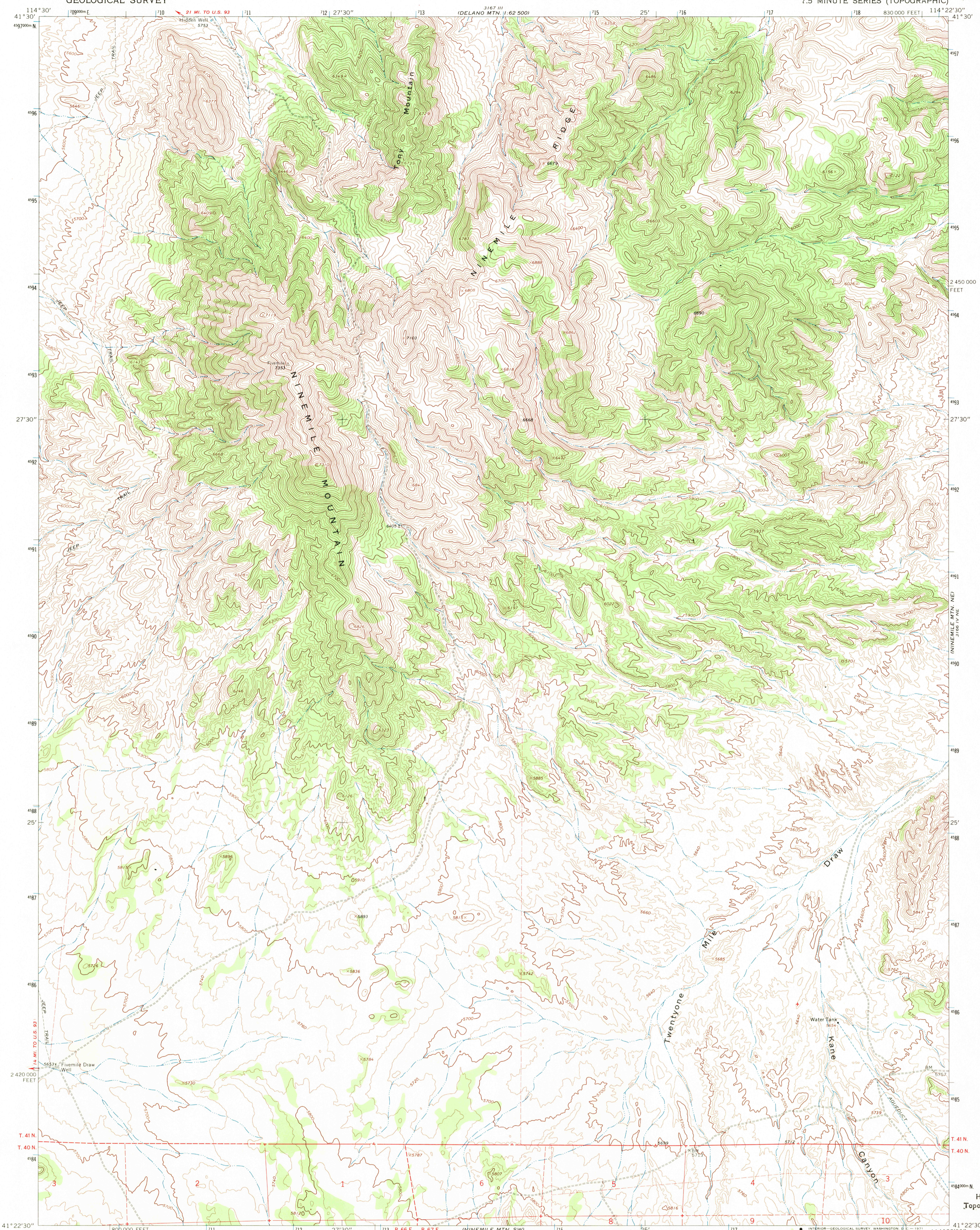
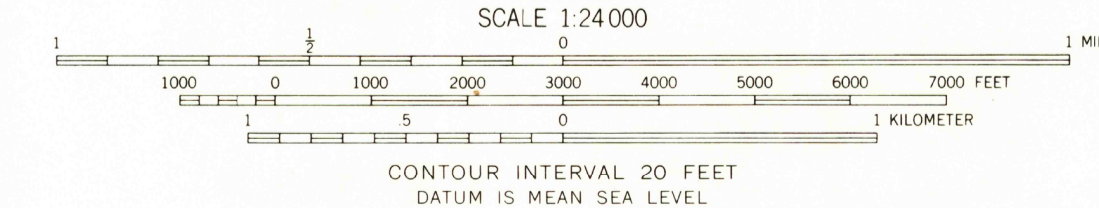
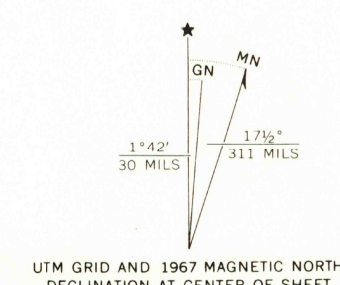


1:62,500  
1:62,500  
1:62,500



Mapped, edited, and published by the Geological Survey  
Control by USGS and USC&GS  
Topography by photogrammetric methods from aerial  
photographs taken 1966. Field checked 1967  
Polyconic projection. 1927 North American datum  
10,000-foot grid based on Nevada coordinate system, east zone  
1000-meter Universal Transverse Mercator grid ticks,  
zone 11, shown in blue  
Fine red dashed lines indicate selected fence lines  
Certain land lines are omitted because of insufficient data



ROAD CLASSIFICATION  
Unimproved dirt -----

QUADRANGLE LOCATION  
**U.S.G.S.**  
**NINEMILE MTN., NEV.**  
N4122.5—W11422.5/7.5  
1967  
AMS 3166 IV NW—SERIES V896

THIS MAP COMPLIES WITH NATIONAL MAP ACCURACY STANDARDS  
FOR SALE BY U.S. GEOLOGICAL SURVEY, DENVER, COLORADO 80225, OR WASHINGTON, D. C. 20242  
A FOLDER DESCRIBING TOPOGRAPHIC MAPS AND SYMBOLS IS AVAILABLE ON REQUEST

**FILE COPY**  
TOPOGRAPHIC DIVISION

USGS  
Historical File  
Topographic Division

2645  
MAR 3 1977