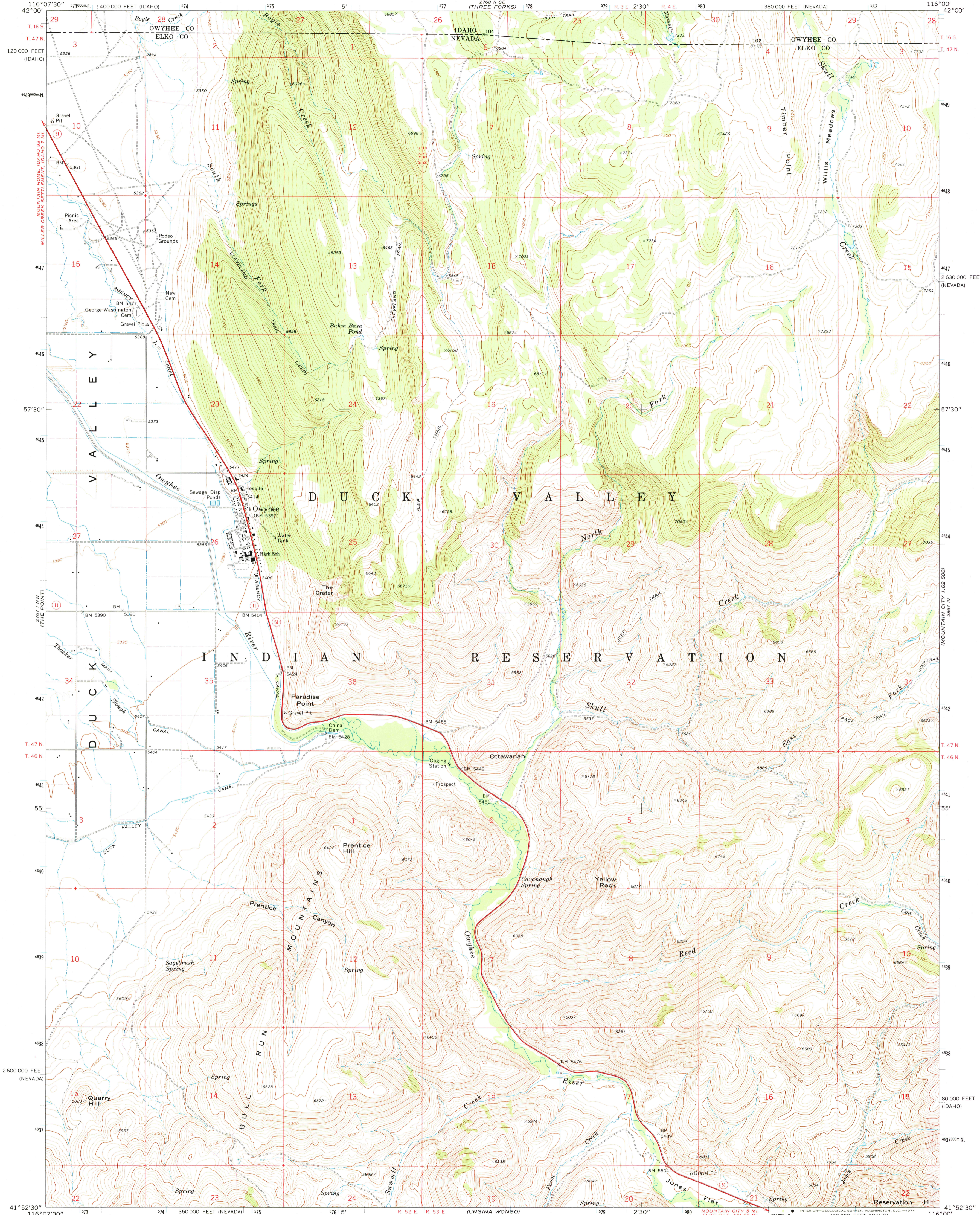
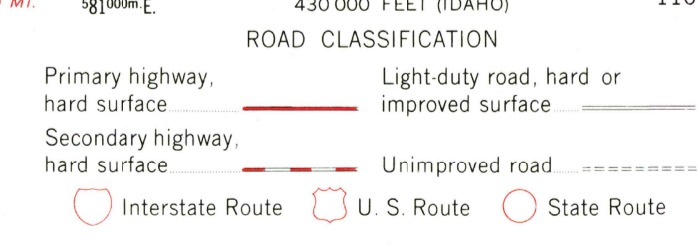
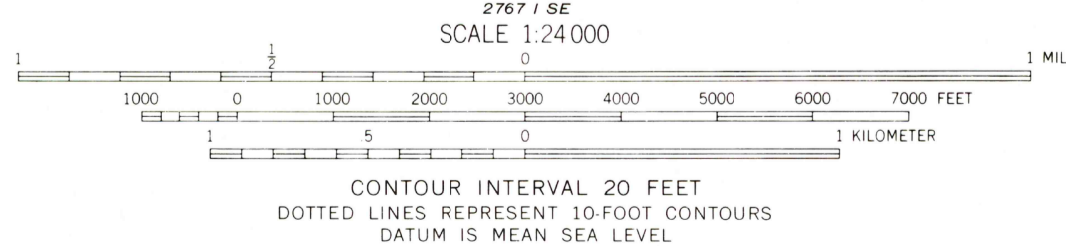
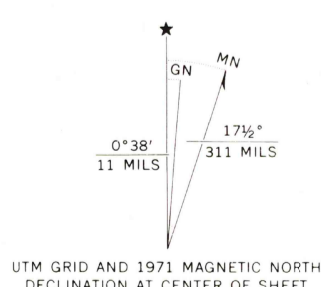


UNITED STATES
DEPARTMENT OF THE INTERIOR
GEOLOGICAL SURVEY

OWYHEE QUADRANGLE
NEVADA-IDAHO
7.5 MINUTE SERIES (TOPOGRAPHIC)
NE/4 OWYHEE 15' QUADRANGLE



Mapped, edited, and published by the Geological Survey
Control by USGS and USC&GS
Topography by photogrammetric methods from aerial
photographs taken 1969. Field checked 1971
Projection: Nevada coordinate system, east zone
(transverse Mercator)
10,000-foot grid ticks based on Nevada coordinate system,
east zone and Idaho coordinate system, west zone
1000-meter Universal Transverse Mercator grid ticks,
zone 11, shown in blue. 1927 North American datum
Fine red dashed lines indicate selected fence lines



THIS MAP COMPLIES WITH NATIONAL MAP ACCURACY STANDARDS
FOR SALE BY U. S. GEOLOGICAL SURVEY, DENVER, COLORADO 80225 OR WASHINGTON, D. C. 20242
A FOLDER DESCRIBING TOPOGRAPHIC MAPS AND SYMBOLS IS AVAILABLE ON REQUEST

USGS
Historical File
Topographic Division

OWYHEE, NEV.-IDAHO
NE/4 OWYHEE 15' QUADRANGLE
N4152.5-W11600/7.5

1971
AMS 2767 I NE-SERIES V896

NOV 22 1974
5300