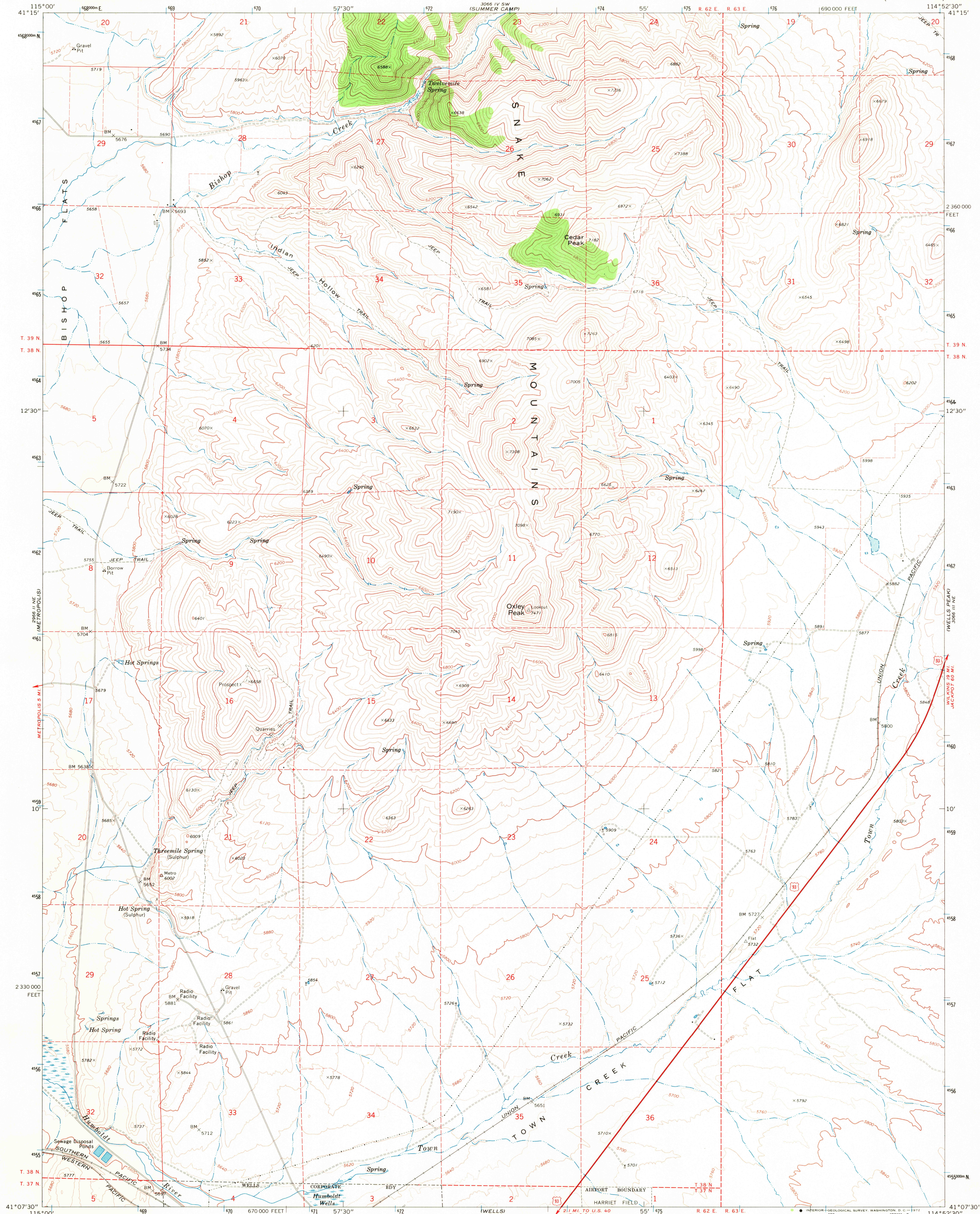


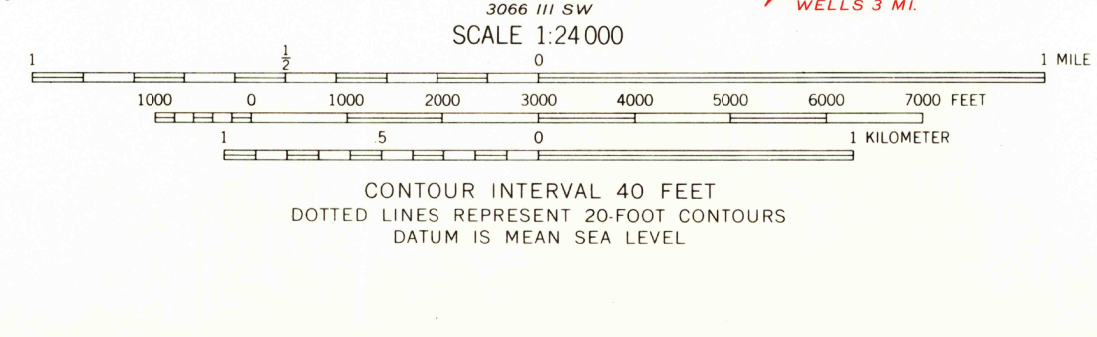
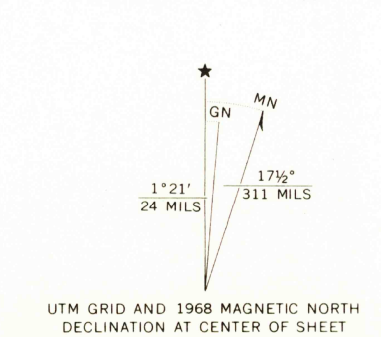
UNITED STATES  
DEPARTMENT OF THE INTERIOR  
GEOLOGICAL SURVEY

OXLEY PEAK QUADRANGLE  
NEVADA—ELKO CO.  
7.5 MINUTE SERIES (TOPOGRAPHIC)

3066 IV SE  
(MELANDRO)



Mapped, edited, and published by the Geological Survey  
Control by USGS and USC&GS  
Topography by photogrammetric methods from aerial  
photographs taken 1967. Field checked 1968  
Polyconic projection. 1927 North American datum  
10,000-foot grid based on Nevada coordinate system, east zone  
1000-meter Universal Transverse Mercator grid ticks,  
zone 11, shown in blue  
Fine red dashed lines indicate selected fence lines  
Certain land lines are omitted because of insufficient data



ROAD CLASSIFICATION  
Primary highway, all weather, Light-duty road, all weather,  
hard surface improved surface  
Unimproved road, fair or dry  
weather  
U.S. Route

THIS MAP COMPLIES WITH NATIONAL MAP ACCURACY STANDARDS  
FOR SALE BY U.S. GEOLOGICAL SURVEY, DENVER, COLORADO 80225, OR WASHINGTON, D.C. 20242  
A FOLDER DESCRIBING TOPOGRAPHIC MAPS AND SYMBOLS IS AVAILABLE ON REQUEST

OXLEY PEAK, NEV.  
N4107.5—W11452.5/7.5  
1968  
AMS 3066 III NW—SERIES V896

JAN 20 1972  
2-090  
USGS  
HISTORICAL FILE  
TOPOGRAPHIC DIVISION