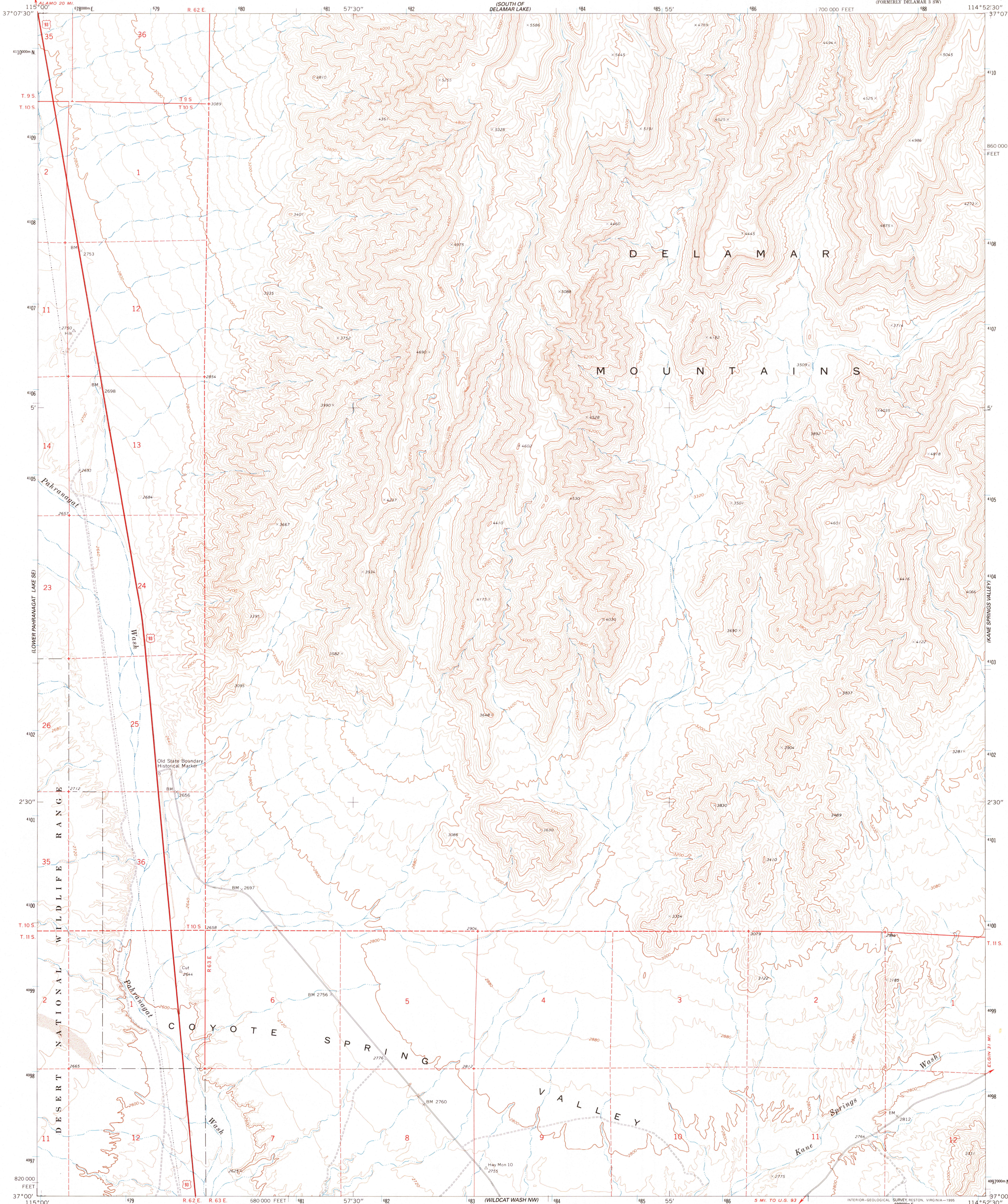
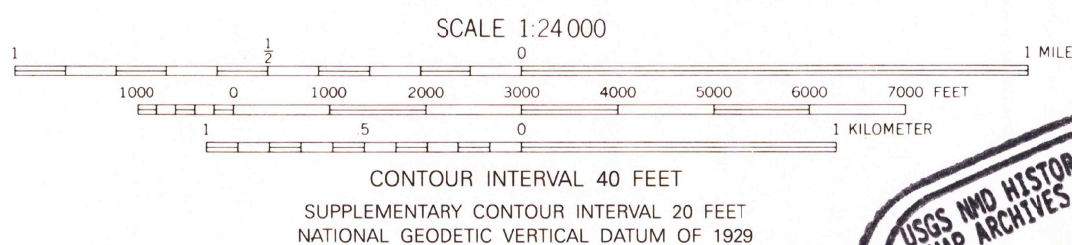
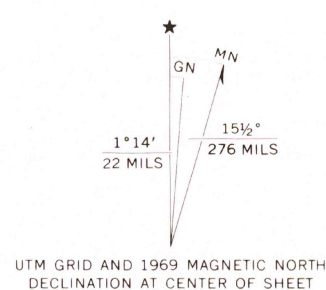


UNITED STATES
DEPARTMENT OF THE INTERIOR
GEOLOGICAL SURVEY

PAHRANAGAT WASH QUADRANGLE
NEVADA-LINCOLN CO.
7.5 MINUTE SERIES (TOPOGRAPHIC)
(FORMERLY DELAMAR & SW)



Produced by the United States Geological Survey
Control by USGS and NOS/NOAA
Compiled from aerial photographs taken 1967. Field checked 1969
North American Datum of 1927 (NAD 27). Projection and
10,000-foot ticks: Nevada Coordinate System, east zone
(Transverse Mercator)
Blue 1000-meter Universal Transverse Mercator ticks, zone 11
North American Datum of 1983 (NAD 83) is shown by dashed
corner ticks. The values of the shift between NAD 27 and NAD 83
for 7.5-minute intersections are obtainable from National Geodetic
Survey NADCON software
There may be private inholdings within the boundaries of the
National or State reservations shown on this map
Where omitted, land lines have not been established



THIS MAP COMPLIES WITH NATIONAL MAP ACCURACY STANDARDS
FOR SALE BY U.S. GEOLOGICAL SURVEY
DENVER, COLORADO 80225, OR RESTON, VIRGINIA 22092
A FOLDER DESCRIBING TOPOGRAPHIC MAPS AND SYMBOLS IS AVAILABLE ON REQUEST



QUADRANGLE LOCATION
Map photoinspected 1990
No major culture or drainage changes observed

ROAD CLASSIFICATION
Primary highway, hard surface
Secondary highway, hard surface
Light duty road, hard or improved surface
Unimproved road
Interstate Route
U.S. Route
State Route

PAHRANAGAT WASH, NV
(FORMERLY DELAMAR & SW)
37114-A8-TF-024

1969
PHOTOINSPECTED 1980

DMA 3058 III SW NW-SERIES V896

