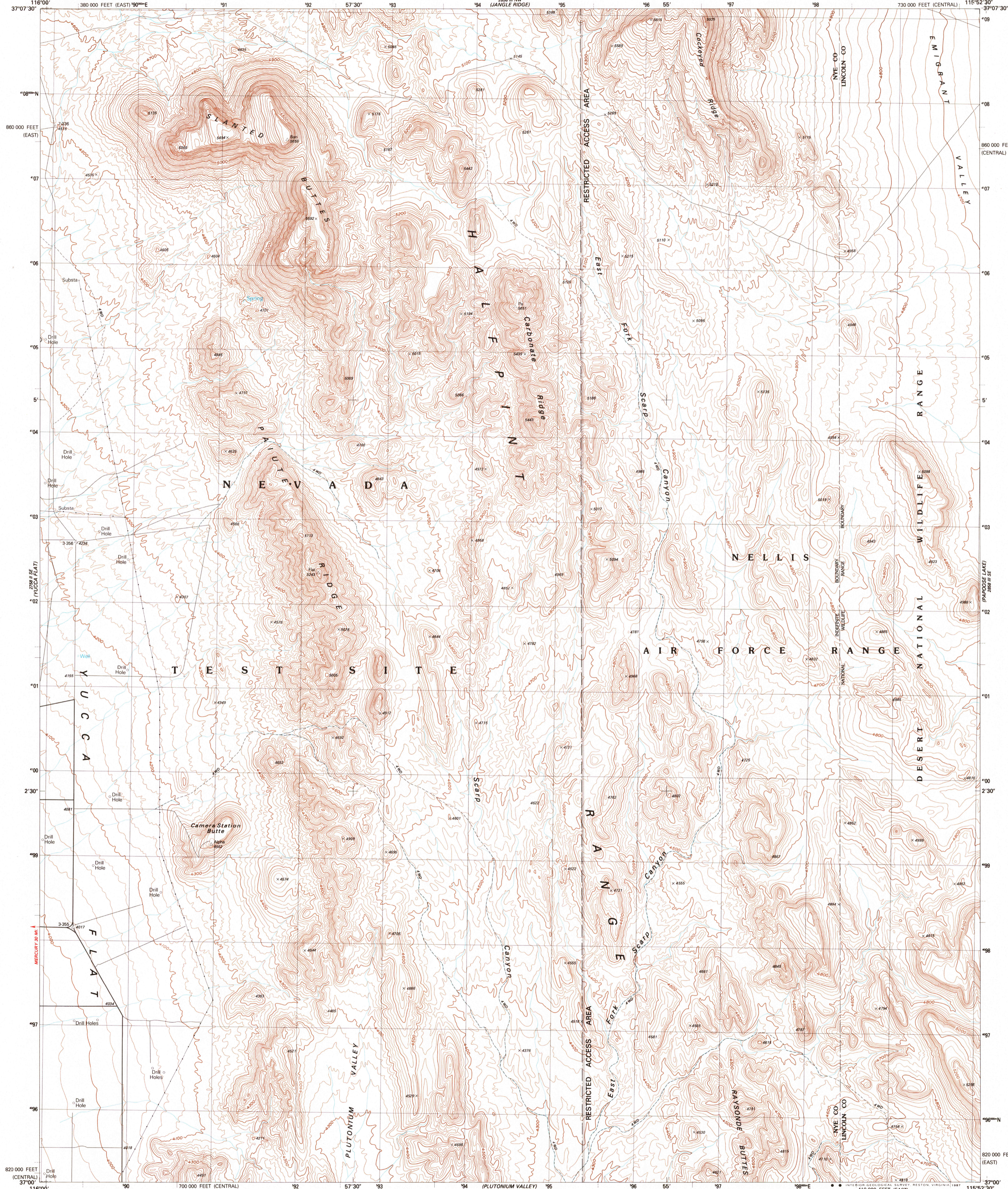


288 NE
(PAPOOSE RANGE)

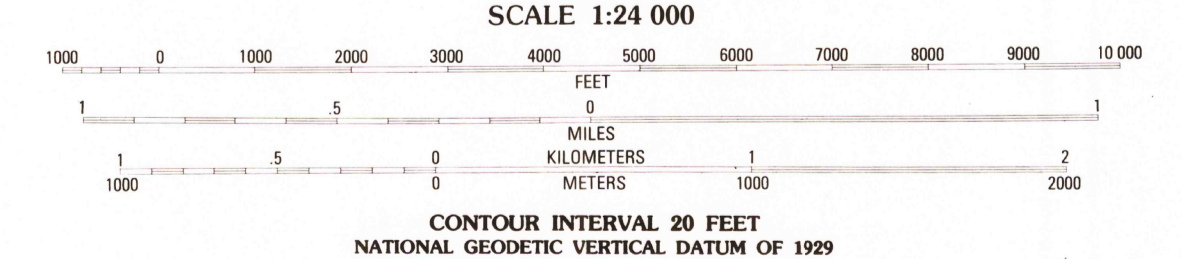
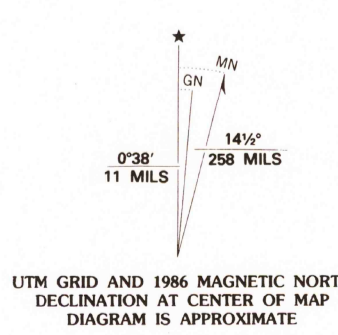
UNITED STATES
DEPARTMENT OF THE INTERIOR
GEOLOGICAL SURVEY

PAIUTE RIDGE QUADRANGLE
NEVADA
7.5 MINUTE SERIES (TOPOGRAPHIC)
SW 4 PAPOOSE LAKE 15' QUADRANGLE

288 NE
(PAPOOSE RANGE)



Produced by the United States Geological Survey
Control by USGS, NOS/NOAA and Department of Energy
Compiled by photogrammetric methods from aerial photographs taken 1959. Field checked 1961. Revised from aerial photographs taken 1983. Field checked 1984. Map edited 1986
Projection: Nevada coordinate system, central zone (transverse Mercator)
10,000-foot grid ticks: Nevada coordinate system central and east zones
1000-meter Universal Transverse Mercator grid, zone 11 1927 North American Datum
To place on the predicted North American Datum 1983 move the projection lines 8 meters north and 77 meters east as shown by dashed corner ticks
Land lines have not been established in this area



CONTOUR INTERVAL 20 FEET
NATIONAL GEODETIC VERTICAL DATUM OF 1929



ROAD CLASSIFICATION

Primary highway, hard surface	Light-duty road, hard or improved surface
Secondary highway, hard surface	Unimproved road
Interstate Route	U. S. Route
	State Route

THIS MAP COMPLIES WITH NATIONAL MAP ACCURACY STANDARDS
FOR SALE BY U. S. GEOLOGICAL SURVEY, DENVER, COLORADO 80225, OR RESTON, VIRGINIA 22092
A FOLDER DESCRIBING TOPOGRAPHIC MAPS AND SYMBOLS IS AVAILABLE ON REQUEST

PAIUTE RIDGE, NEV.
SW 4 PAPOOSE LAKE 15' QUADRANGLE
37115-A8-TF-024
1986
DMA 2858 III SW-SERIES V896

RECORD FILE COPY