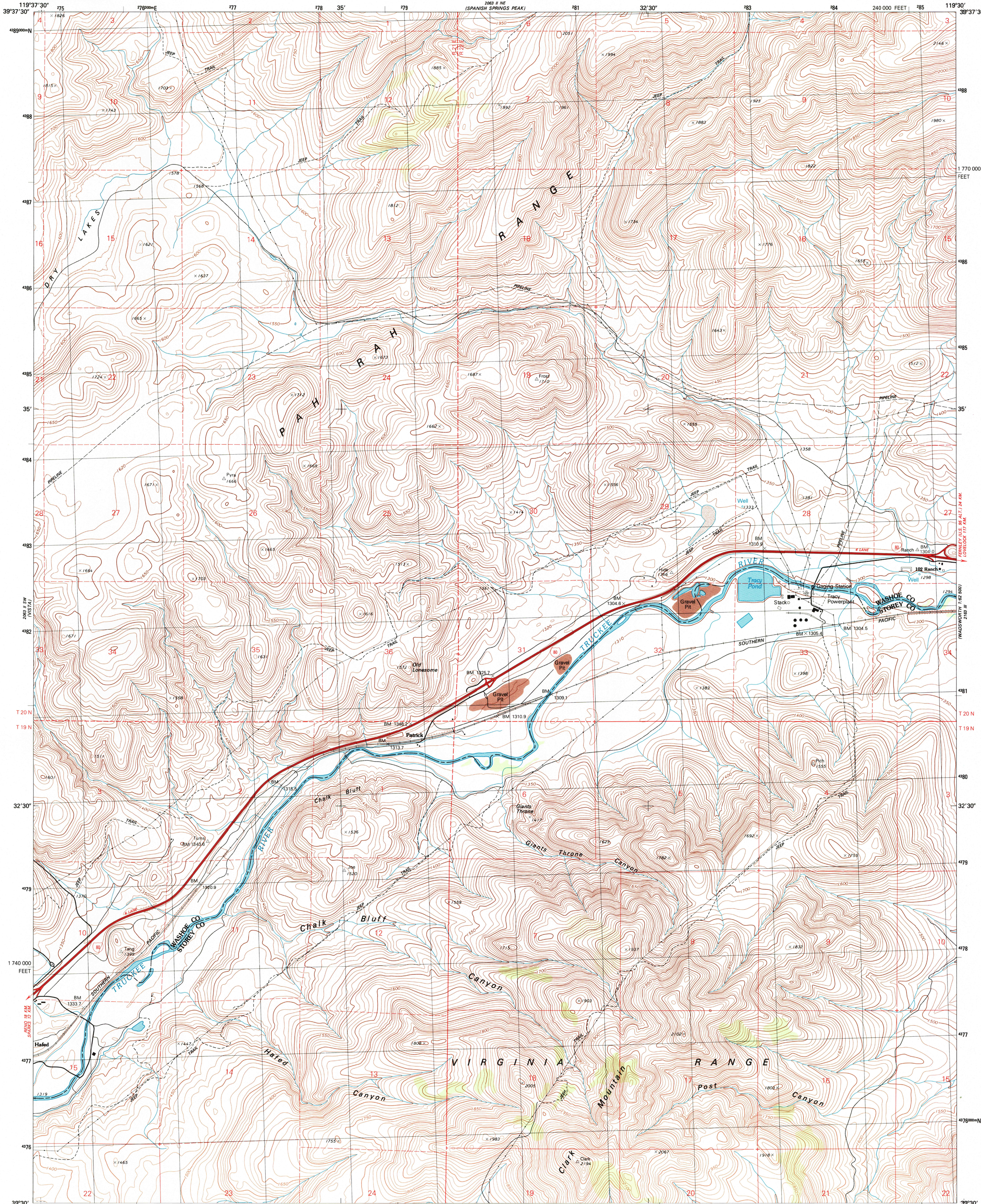




U.S. DEPARTMENT OF THE INTERIOR
U.S. GEOLOGICAL SURVEY

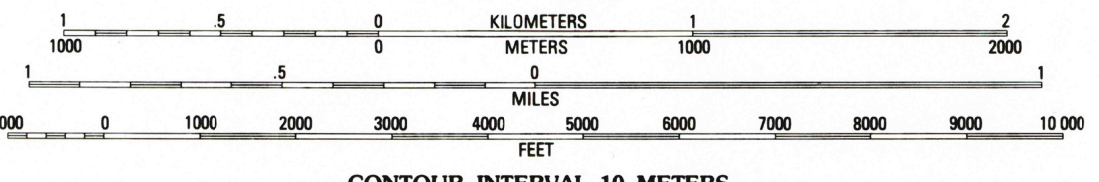
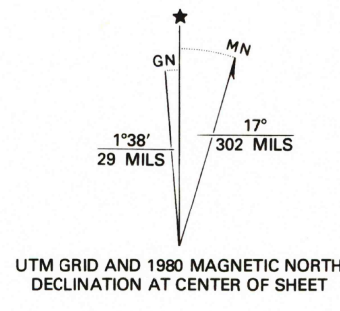
STATE OF NEVADA
NEVADA BUREAU OF MINES AND GEOLOGY

PATRICK QUADRANGLE
NEVADA
7.5 MINUTE SERIES (TOPOGRAPHIC)
SE/4 SPANISH SPRINGS VALLEY 15' QUADRANGLE



Produced by the United States Geological Survey

Control by USGS and NOS/NOAA
Topography by photogrammetric methods from aerial photographs taken 1974-75. Field checked 1976. Map edited 1980
Projection and 10,000-foot grid ticks: Nevada coordinate system, west zone (transverse Mercator)
1000-meter Universal Transverse Mercator grid, zone 11 1927 North American Datum
To place on the predicted North American Datum 1983 move the projection lines 14 meters north and 86 meters east as shown by dashed corner ticks



CONTOUR INTERVAL 10 METERS
SUPPLEMENTARY CONTOUR INTERVAL 5 METERS
NATIONAL GEODETIC VERTICAL DATUM 1929



ROAD CLASSIFICATION

Primary highway, hard surface	Light-duty road, hard or improved surface
Secondary highway, hard surface	Unimproved road
Interstate Route	U. S. Route
	State Route

PATRICK, NEV.
SE/4 SPANISH SPRINGS VALLEY 15' QUADRANGLE
N9330-W11930/7.5

1980

DMA 2063 II SE--SERIES V896

THIS MAP COMPLIES WITH NATIONAL MAP ACCURACY STANDARDS FOR SALE BY U.S. GEOLOGICAL SURVEY, P.O. BOX 25296, DENVER, COLORADO 80225 A FOLDER DESCRIBING TOPOGRAPHIC MAPS AND SYMBOLS IS AVAILABLE ON REQUEST

RECEIVED
OCT 31 1999
USGS/AMND
HISTORICAL MAP ARCHIVES

