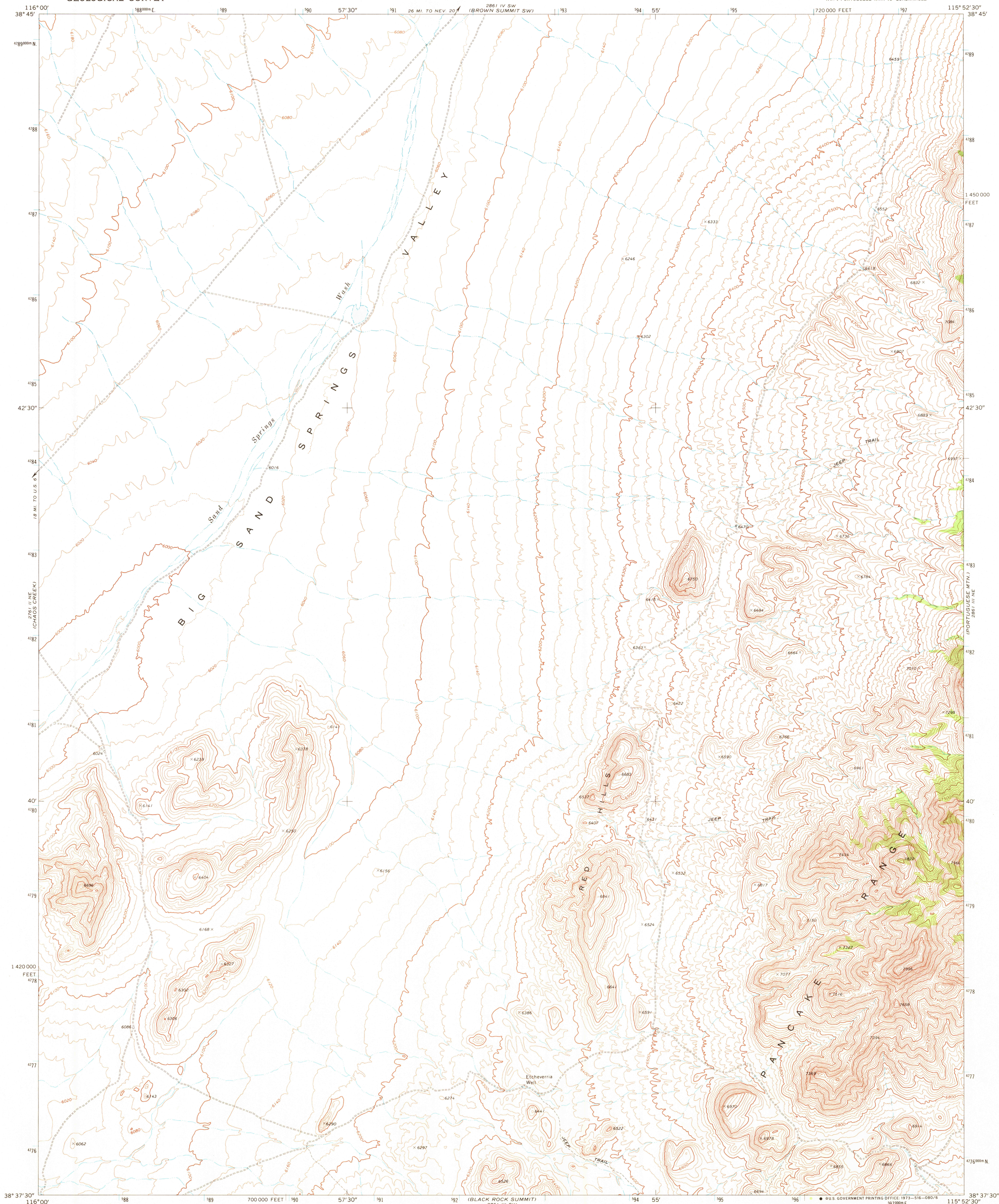
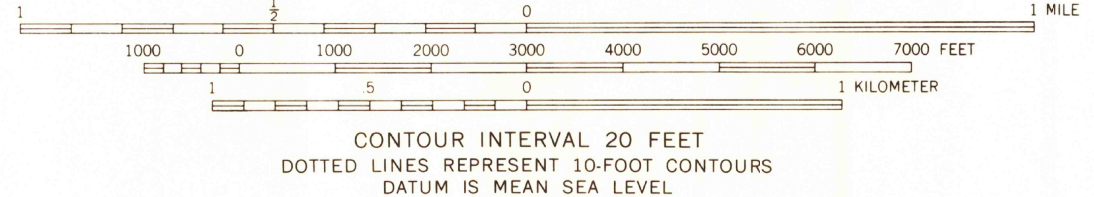
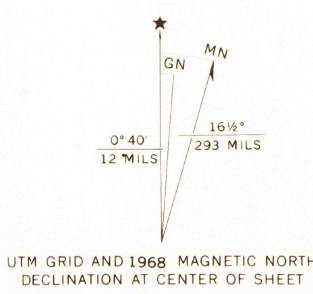


UNITED STATES
DEPARTMENT OF THE INTERIOR
GEOLOGICAL SURVEY

PORTUGUESE MTN. NW QUADRANGLE
NEVADA—NVE CO.
7.5 MINUTE SERIES (TOPOGRAPHIC)
NW 1/4 PORTUGUESE MTN. 15' QUADRANGLE



Mapped, edited, and published by the Geological Survey
in cooperation with the Atomic Energy Commission
Control by USGS and USC&GS
Topography by photogrammetric methods from aerial
photographs taken 1967. Field checked 1968
Polyconic projection. 1927 North American datum
10,000-foot grid based on Nevada coordinate system, central zone
1000-meter Universal Transverse Mercator grid ticks,
zone 11, shown in blue
Land lines have not been established in this area



THIS MAP COMPLIES WITH NATIONAL MAP ACCURACY STANDARDS
FOR SALE BY U. S. GEOLOGICAL SURVEY, DENVER, COLORADO 80225, OR WASHINGTON, D. C. 20242
A FOLDER DESCRIBING TOPOGRAPHIC MAPS AND SYMBOLS IS AVAILABLE ON REQUEST



PORTUGUESE MTN. NW, NEV.
NW 1/4 PORTUGUESE MTN. 15' QUADRANGLE
N 3837.5—W 11552.5/7.5

ROAD CLASSIFICATION
Unimproved dirt -----

1968
AMS 2861 III NW—SERIES V896

How
2000

JUN 19 1975