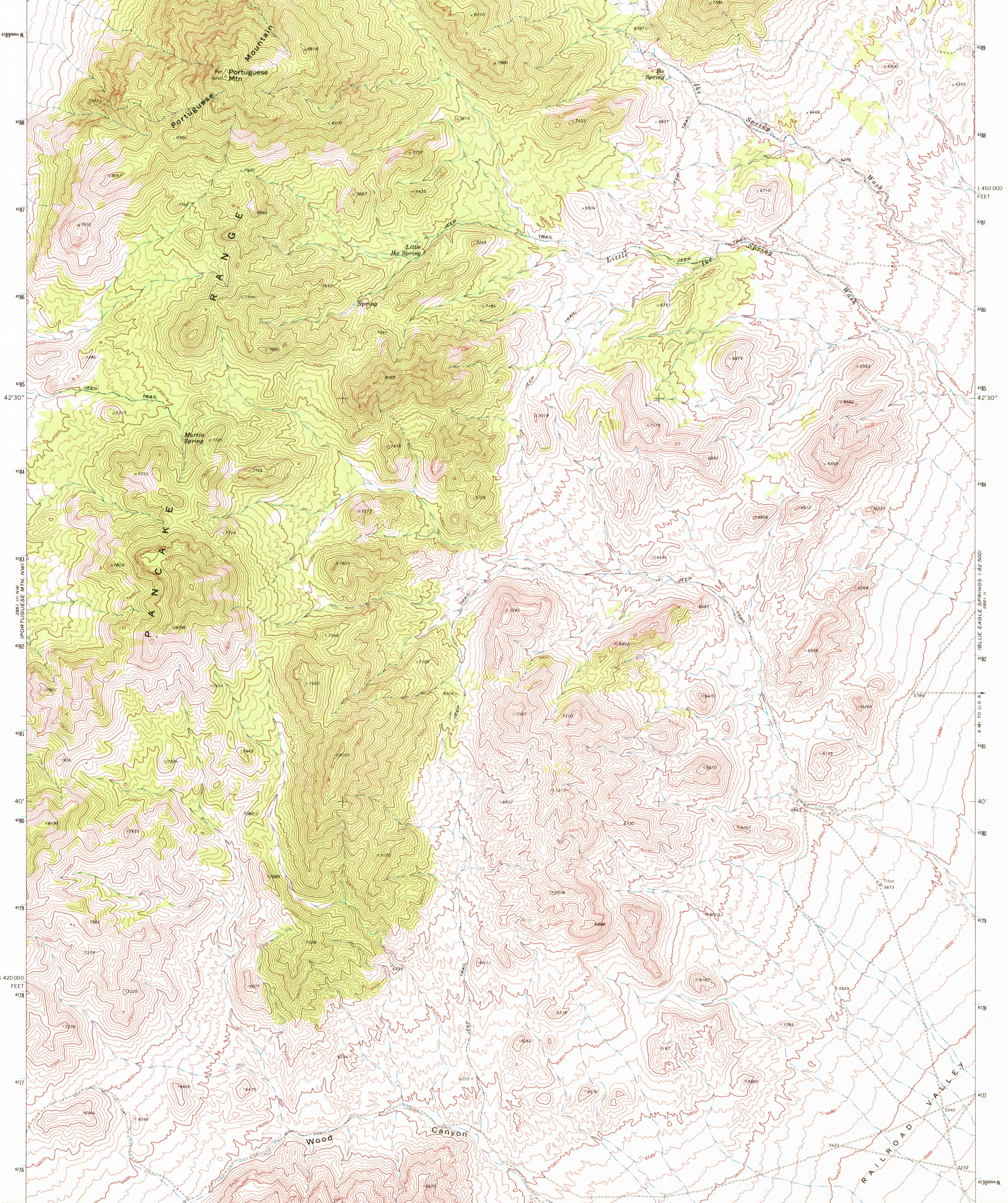
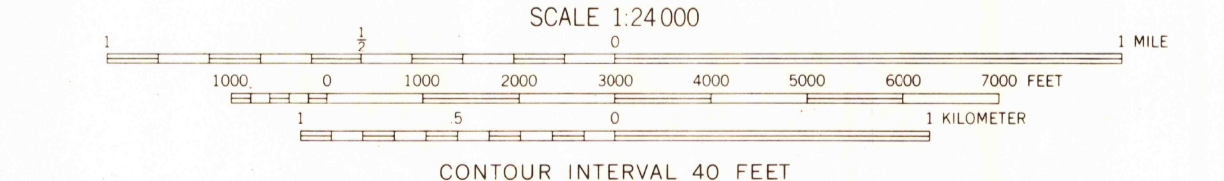
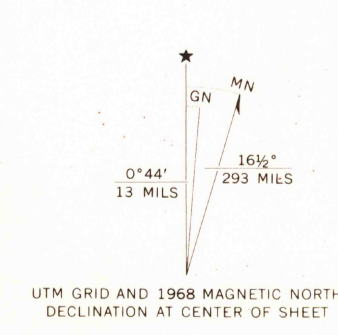


115°52'30" 599 500 400 50' 402 47'30" 406 407 760 000 FEET 115°45' 38°45'



Maped, edited, and published by the Geological Survey in cooperation with the Atomic Energy Commission. Control by USGS and USC&GS. Topography by photogrammetric methods from aerial photographs taken 1967. Field checked 1968. Polyconic projection. 1927 North American datum. 10,000-foot grid based on Nevada coordinate system, central zone. 1000-meter Universal Transverse Mercator grid ticks, zone 11, shown in blue. Land lines have not been established in this area.



ROAD CLASSIFICATION
Unimproved road, fair or dry weather

THIS MAP COMPLIES WITH NATIONAL MAP ACCURACY STANDARDS
FOR SALE BY U. S. GEOLOGICAL SURVEY, DENVER, COLORADO 80225, OR WASHINGTON, D. C. 20242
A FOLDER DESCRIBING TOPOGRAPHIC MAPS AND SYMBOLS IS AVAILABLE ON REQUEST

PORTUGUESE MTN., NEV.
NE 1/4 PORTUGUESE MTN. 15' QUADRANGLE
N3837.5 - W11545.7.5

USGS HISTORICAL FILE TOPOGRAPHIC DIVISION

1968
AMS 2861 III NE - SERIES V896

OCT 19 1972

2300