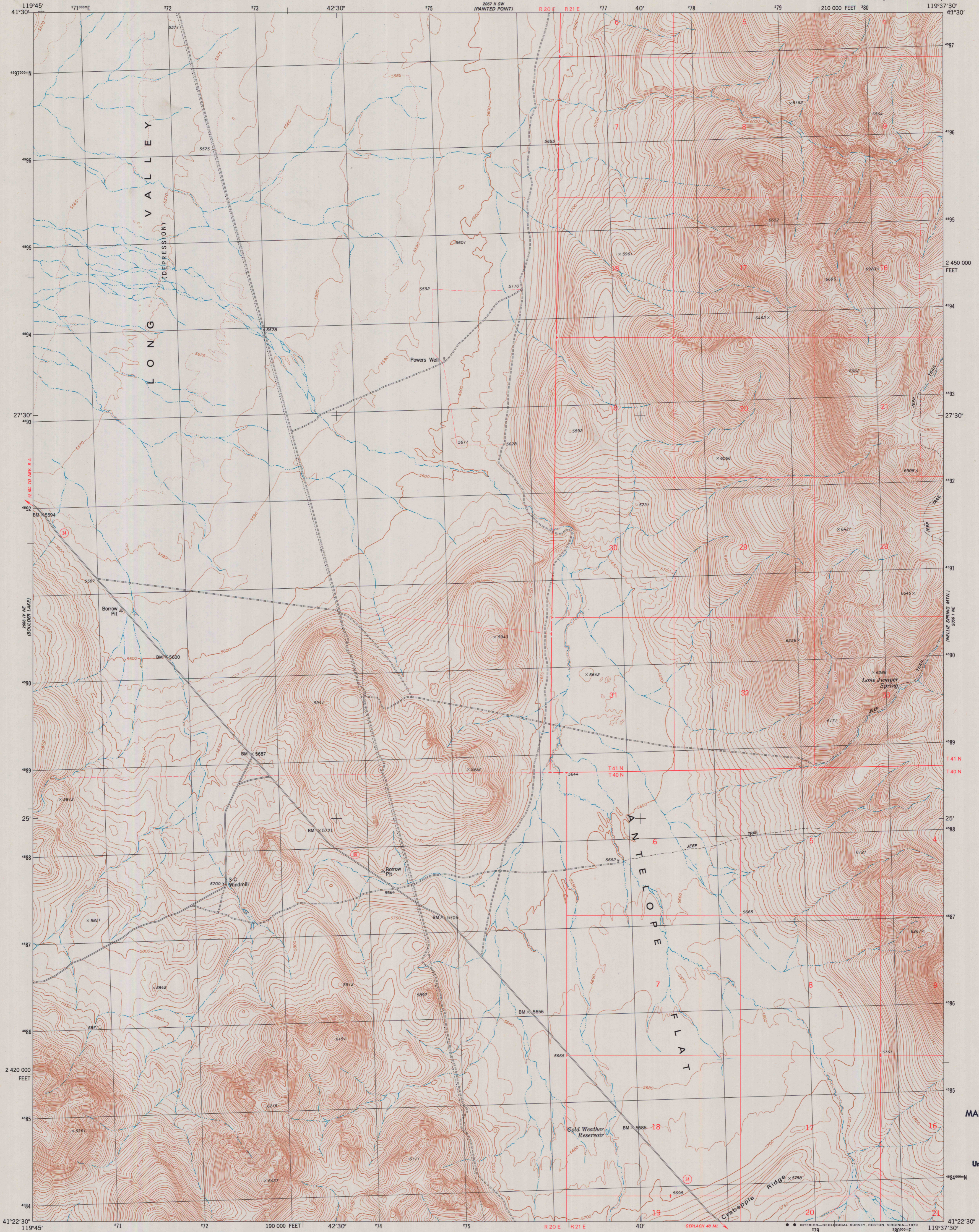


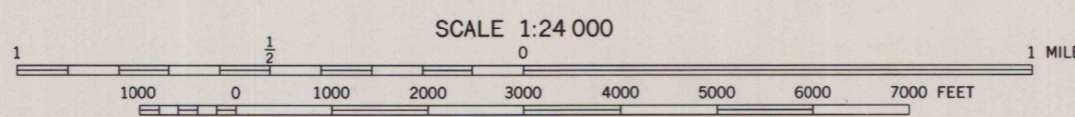
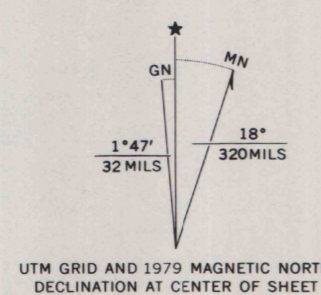


2001 1:50 MASSACHEUSETTS

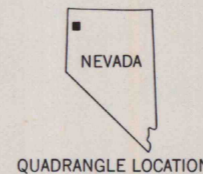


Mapped, edited, and published by the Geological Survey

Control by USGS and NOS/NOAA  
Topography by photogrammetric methods from aerial photographs taken 1972. Field checked 1975. Map edited 1979  
Projection and 10,000-foot grid ticks: Nevada coordinate system, west zone (transverse Mercator)  
1000-meter Universal Transverse Mercator grid, zone 11 1927 North American datum  
To place on the predicted North American Datum 1983 move the projection lines 16 meters north and 86 meters east as shown by dashed corner ticks  
Where omitted, land lines have not been established or are not shown because of insufficient data



CONTOUR INTERVAL 10 FEET  
DOTTED LINES REPRESENT 5-FOOT CONTOURS  
NATIONAL GEODETIC VERTICAL DATUM OF 1929



ROAD CLASSIFICATION

Primary highway, hard surface	Light-duty road, hard or improved surface
Secondary highway, hard surface	Unimproved road
Interstate Route	U.S. Route
	State Route

THIS MAP COMPLIES WITH NATIONAL MAP ACCURACY STANDARDS  
FOR SALE BY U.S. GEOLOGICAL SURVEY, DENVER, COLORADO 80225, OR RESTON, VIRGINIA 22092  
A FOLDER DESCRIBING TOPOGRAPHIC MAPS AND SYMBOLS IS AVAILABLE ON REQUEST

POWERS WELL, NEV.  
N4122.5-W11937.5/7.5

1979

DMA 2066 1 NW—SERIES V896

MAP AND AIR PHOTO  
LIBRARY

OCT 30 1979

University of Wisconsin  
Madison