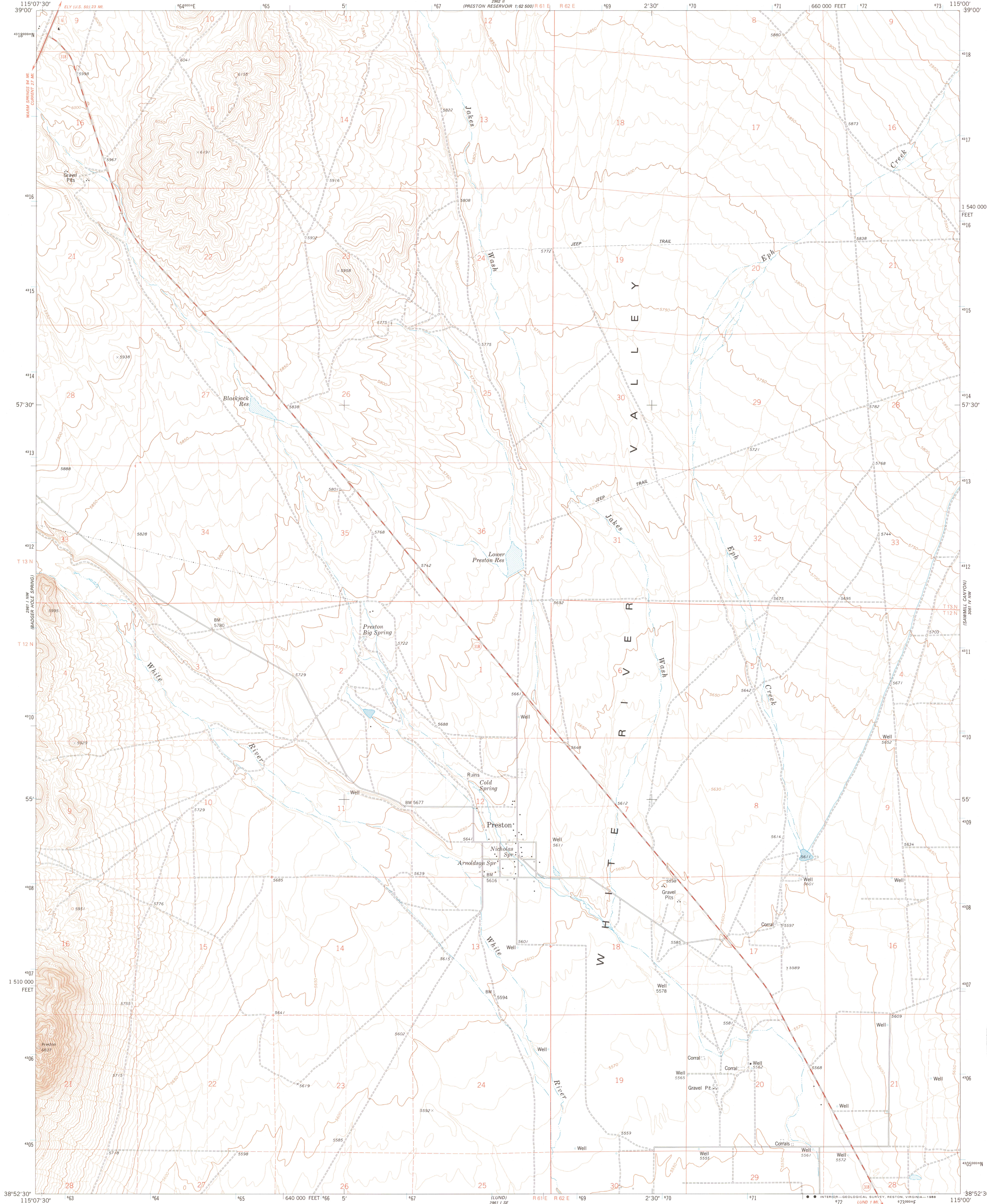


UNITED STATES
DEPARTMENT OF THE INTERIOR
GEOLOGICAL SURVEY

PRESTON QUADRANGLE
NEVADA-WHITE PINE CO.
7.5 MINUTE SERIES (TOPOGRAPHIC)



Mapped, edited, and published by the Geological Survey

Control by USGS and NOS/NOAA

Topography by photogrammetric methods from aerial photographs

taken 1972. Field checked 1973. Map edited 1979

Projection and 10,000-foot grid ticks: Nevada coordinate

system, east zone (transverse Mercator)

1000-meter Universal Transverse Mercator grid ticks,

zone 11, shown in blue. 1927 North American Datum

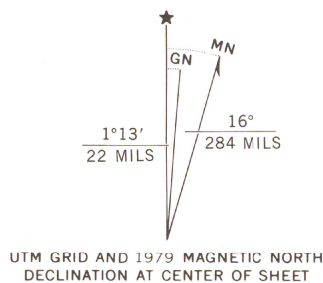
To place on the predicted North American Datum 1983

move the projection lines 10 meters north and

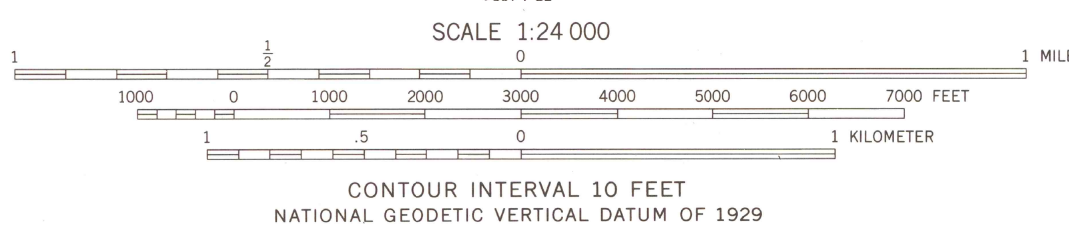
74 meters east as shown by dashed corner ticks

Fine red dashed lines indicate selected fence and field lines where

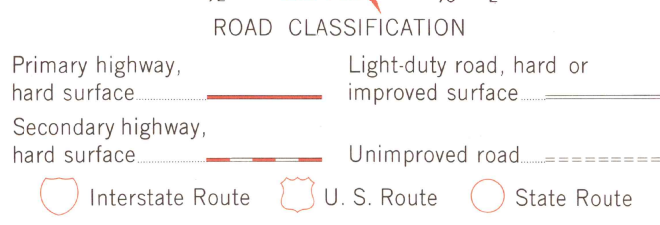
generally visible on aerial photographs. This information is unchecked



UTM GRID AND 1979 MAGNETIC NORTH
DECLINATION AT CENTER OF SHEET



QUADRANGLE LOCATION



PRESTON, NEV.
38115-H1-TF-024

1979

DMA 2961 1 NE-SERIES V896

USGS NMED HISTORICAL MAP
JUL 19 1998
REC'D FILE COPY