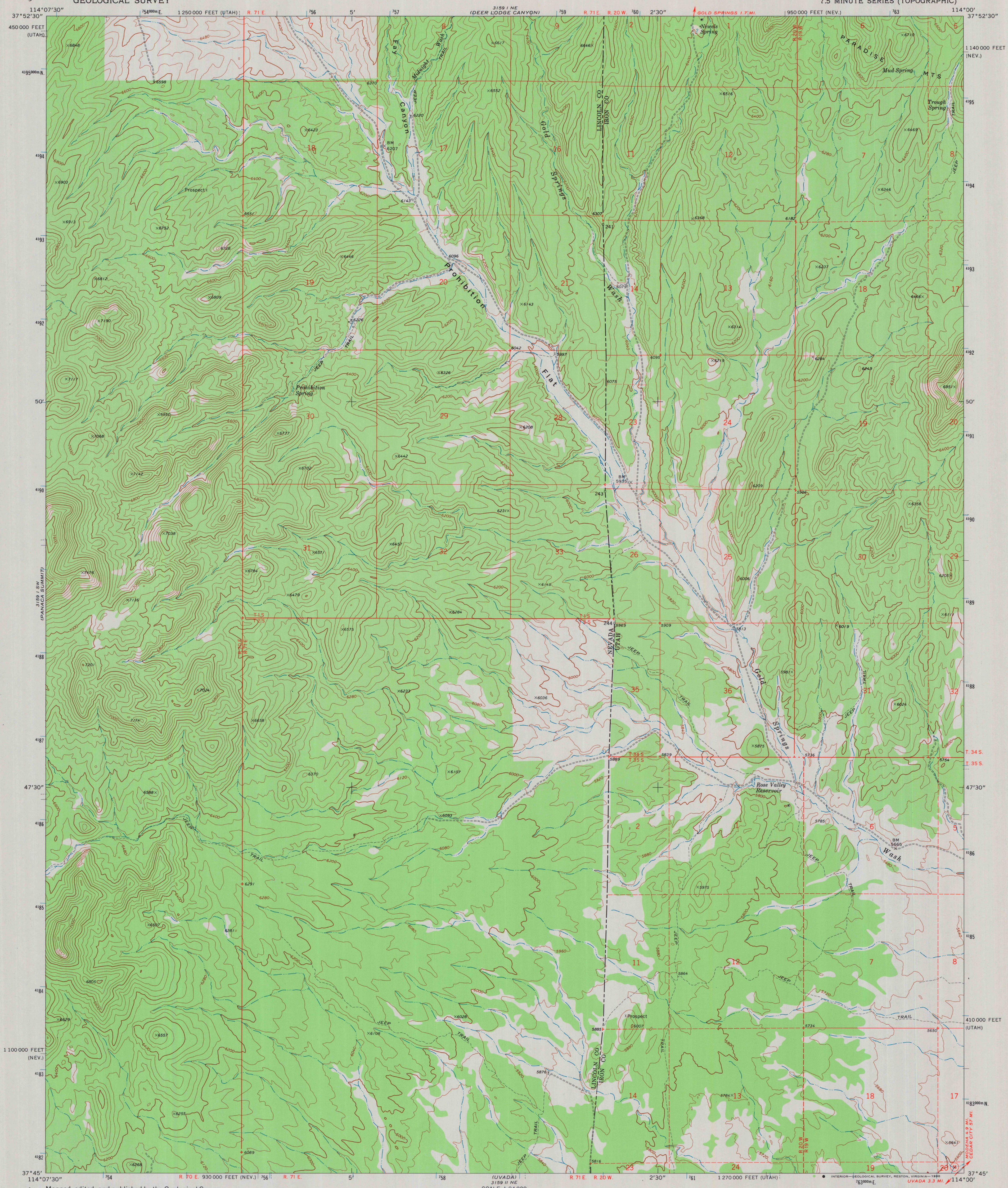
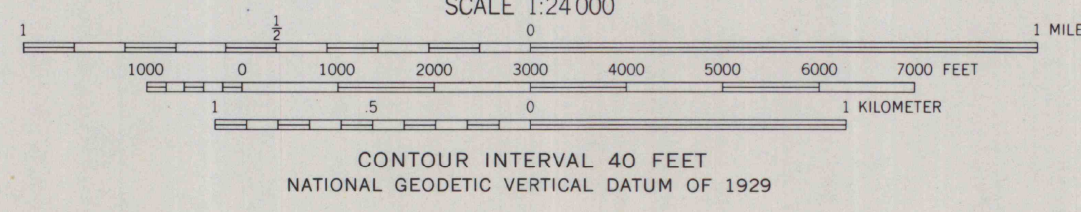
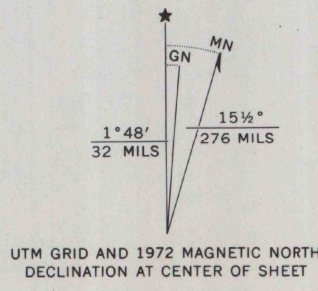


UNITED STATES
DEPARTMENT OF THE INTERIOR
GEOLOGICAL SURVEY

PROHIBITION FLAT QUADRANGLE
NEVADA-UTAH
7.5 MINUTE SERIES (TOPOGRAPHIC)



Mapped, edited, and published by the Geological Survey
Control by USGS and USC&GS
Topography by photogrammetric methods from aerial photographs taken 1971. Field checked 1972
Projection: Nevada coordinate system, east zone (transverse Mercator)
10,000-foot grid ticks based on Nevada coordinate system, east zone and Utah coordinate system, south zone
1000-meter Universal Transverse Mercator grid ticks, zone 11, shown in blue. 1927 North American datum
Fine red dashed lines indicate selected fence lines
Where omitted, land lines have not been established
Map photoinspected 1980
No major culture or drainage changes observed



ROAD CLASSIFICATION

Primary highway, hard surface	Light-duty road, hard or improved surface
Secondary highway, hard surface	Unimproved road
Interstate Route	U. S. Route
	State Route

THIS MAP COMPLIES WITH NATIONAL MAP ACCURACY STANDARDS
FOR SALE BY U. S. GEOLOGICAL SURVEY, DENVER, COLORADO 80225, OR RESTON, VIRGINIA 22092
A FOLDER DESCRIBING TOPOGRAPHIC MAPS AND SYMBOLS IS AVAILABLE ON REQUEST

PROHIBITION FLAT, NEV.-UTAH
N3745-W11400/7.5

1972
PHOTOINSPECTED 1980
AMS 3159 1 SE-SERIES V896

U.S. Regional
Depository Copy
DO NOT DISCARD

A.H. ROBINSON
MAP LIBRARY
APR 10 1991

University of Wisconsin
Madison