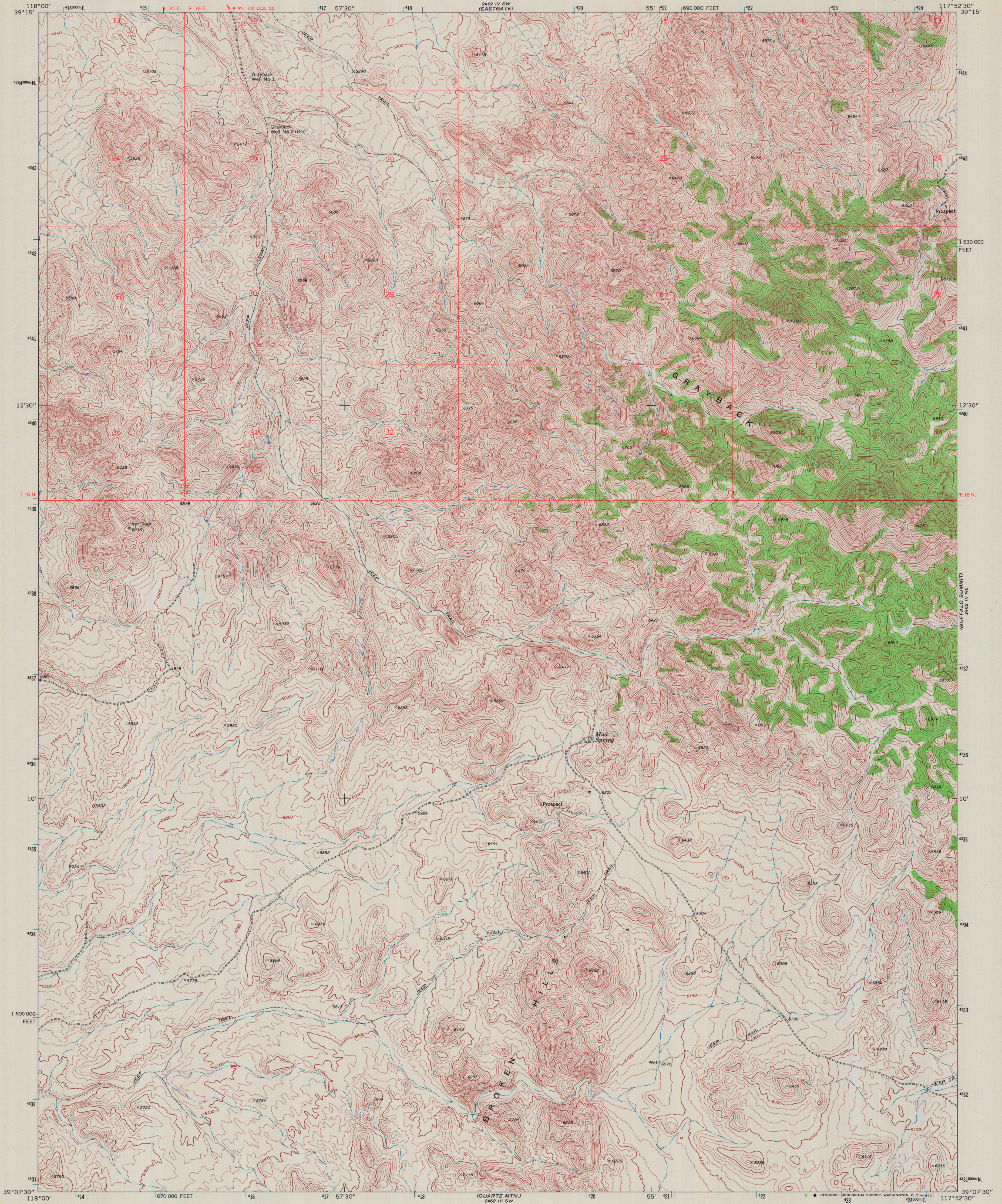
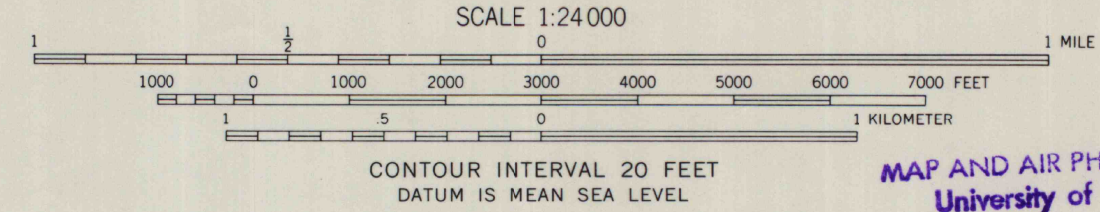
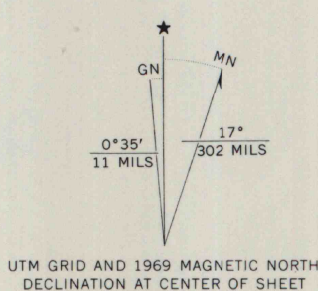


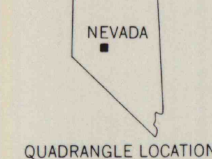
2462 III SE
(DESAVOA PEAK)



Mapped, edited, and published by the Geological Survey
Control by USGS and USC&GS
Topography by photogrammetric methods from aerial
photographs taken 1967. Field checked 1969
Polyconic projection. 1927 North American datum
10,000-foot grid based on Nevada coordinate system, west zone
1000-meter Universal Transverse Mercator grid ticks,
zone 11, shown in blue
Where omitted, land lines have not been established



MAP AND AIR PHOTO LIBRARY
University of Wisconsin
JUN 14 1972



ROAD CLASSIFICATION
Unimproved road, fair or dry weather -----

QUARTZ MTN. NW, NEV.
N3907.5—W11752.5/7.5

THIS MAP COMPLIES WITH NATIONAL MAP ACCURACY STANDARDS
FOR SALE BY U. S. GEOLOGICAL SURVEY, DENVER, COLORADO 80225, OR WASHINGTON, D. C. 20242
A FOLDER DESCRIBING TOPOGRAPHIC MAPS AND SYMBOLS IS AVAILABLE ON REQUEST

1969
AMS 2462 III NW—SERIES V896