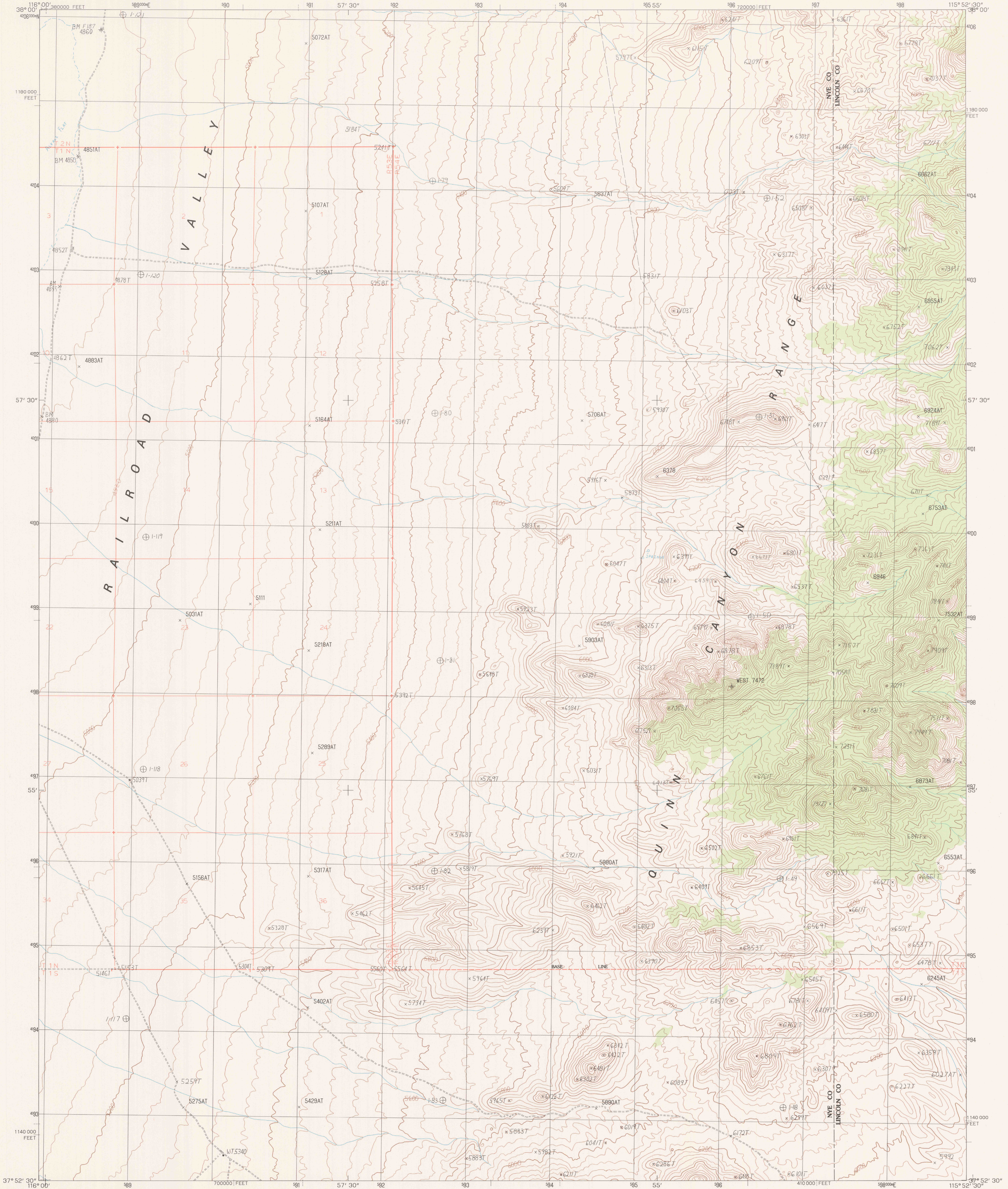


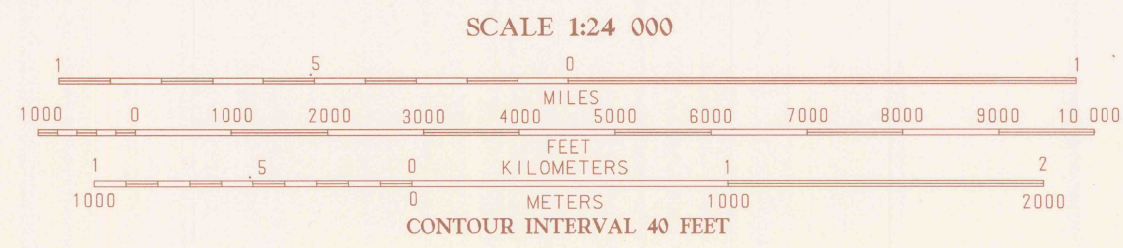
UNITED STATES
DEPARTMENT OF THE INTERIOR
GEOLOGICAL SURVEY

QUINN CANYON SPRINGS NW QUADRANGLE
NEVADA
7.5 MINUTE SERIES (TOPOGRAPHIC)



PRODUCED BY THE UNITED STATES GEOLOGICAL SURVEY
CONTROL BY U.S.G.S. NOS/NOAA
COMPILED FROM AERIAL PHOTOGRAPHS TAKEN 1980
FIELD CHECKED 1981 MAP EDITED 1985
PROJECTION TRANSVERSE MERCATOR
GRID 1000-METER UNIVERSAL TRANSVERSE MERCATOR ZONE 12
1000-FOOT STATE GRID TICS NEVADA, CENTRAL ZONE
AND EAST ZONE
UTM GRID DECLINATION 0°39' EAST
1985 MAGNETIC NORTH DECLINATION 14°30' EAST
VERTICAL DATUM NATIONAL GEODETIC VERTICAL DATUM OF 1959
HORIZONTAL DATUM 1927 NORTH AMERICAN DATUM
To place on the predicted North American Datum of 1983,
move the projection lines as shown by dashed corner ticks
(9 meters north and 77 meters east)
There may be private inholdings within the boundaries of any
Federal and State Reservations shown on this map
Where omitted, land lines have not been established or are
not shown because of insufficient data
All marginal data and lettering generated and positioned by
automated type placement procedures

PROVISIONAL MAP
Produced from original
manuscript drawings. Infor-
mation shown as of date of
field check.



QUADRANGLE LOCATION

1	2	3	4	5	6	7	8
1 Raville SE	2 Red Well	3 Goat Ranch Springs	4 Red Well	5 Quinn Canyon Springs	6 Raville Peak SE	7 Black Top	8 House John Well

ADJOINING 7.5 QUADRANGLE NAMES

ROAD LEGEND
Improved Road
Unimproved Road
Trail
Interstate Route U.S. Route State Route
QUINN CANYON SPRINGS NW, NEV.
PROVISIONAL EDITION 1985
37115-HB-TT-024

USGS NHD HISTORICAL MAP
MAY 01 1985
REC'D FILE COPY