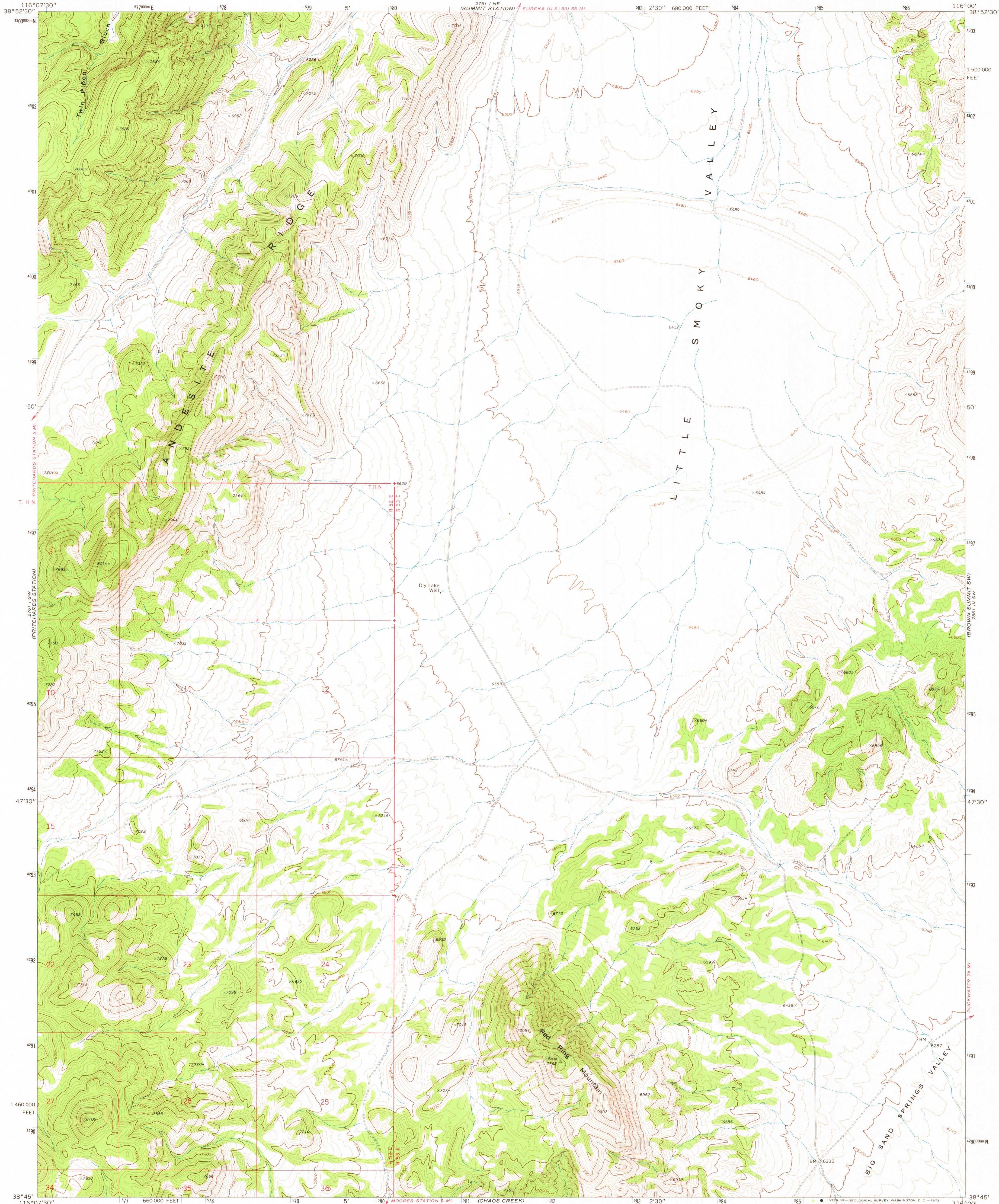
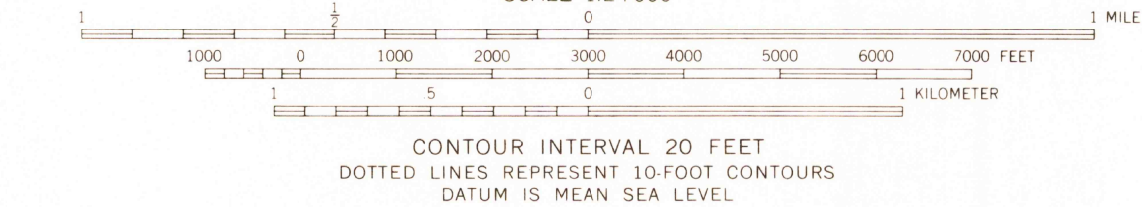
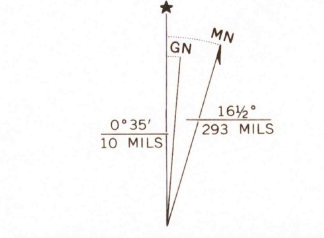


UNITED STATES
DEPARTMENT OF THE INTERIOR
GEOLOGICAL SURVEY

RED RING MTN. QUADRANGLE
NEVADA—NYE CO.
7.5 MINUTE SERIES (TOPOGRAPHIC)
SE/4 PRITCHARDS STATION 15' QUADRANGLE



Mapped, edited, and published by the Geological Survey
in cooperation with the Atomic Energy Commission
Control by USGS and USC&GS
Topography by photogrammetric methods from aerial
photographs taken 1967. Field checked 1968
Polyconic projection. 1927 North American datum
10,000-foot grid based on Nevada coordinate system, central zone
1000-meter Universal Transverse Mercator grid ticks,
zone 11, shown in blue
Where omitted, land lines have not been established



ROAD CLASSIFICATION	
Primary highway, hard surface	Light-duty road, hard or improved surface
Secondary highway, hard surface	Unimproved road
Interstate Route	U.S. Route
	State Route

RED RING MTN., NEV.
SE/4 PRITCHARDS STATION 15' QUADRANGLE
N3845—W11600/7.5
1968

THIS MAP COMPLIES WITH NATIONAL MAP ACCURACY STANDARDS
FOR SALE BY U.S. GEOLOGICAL SURVEY, DENVER, COLORADO 80225, OR WASHINGTON, D.C. 20242
A FOLDER DESCRIBING TOPOGRAPHIC MAPS AND SYMBOLS IS AVAILABLE ON REQUEST

AMS 2761 I SE—SERIES V896

2530
USGS
HISTORICAL FILE
TOPOGRAPHIC DIVISION
MAR 26 1973