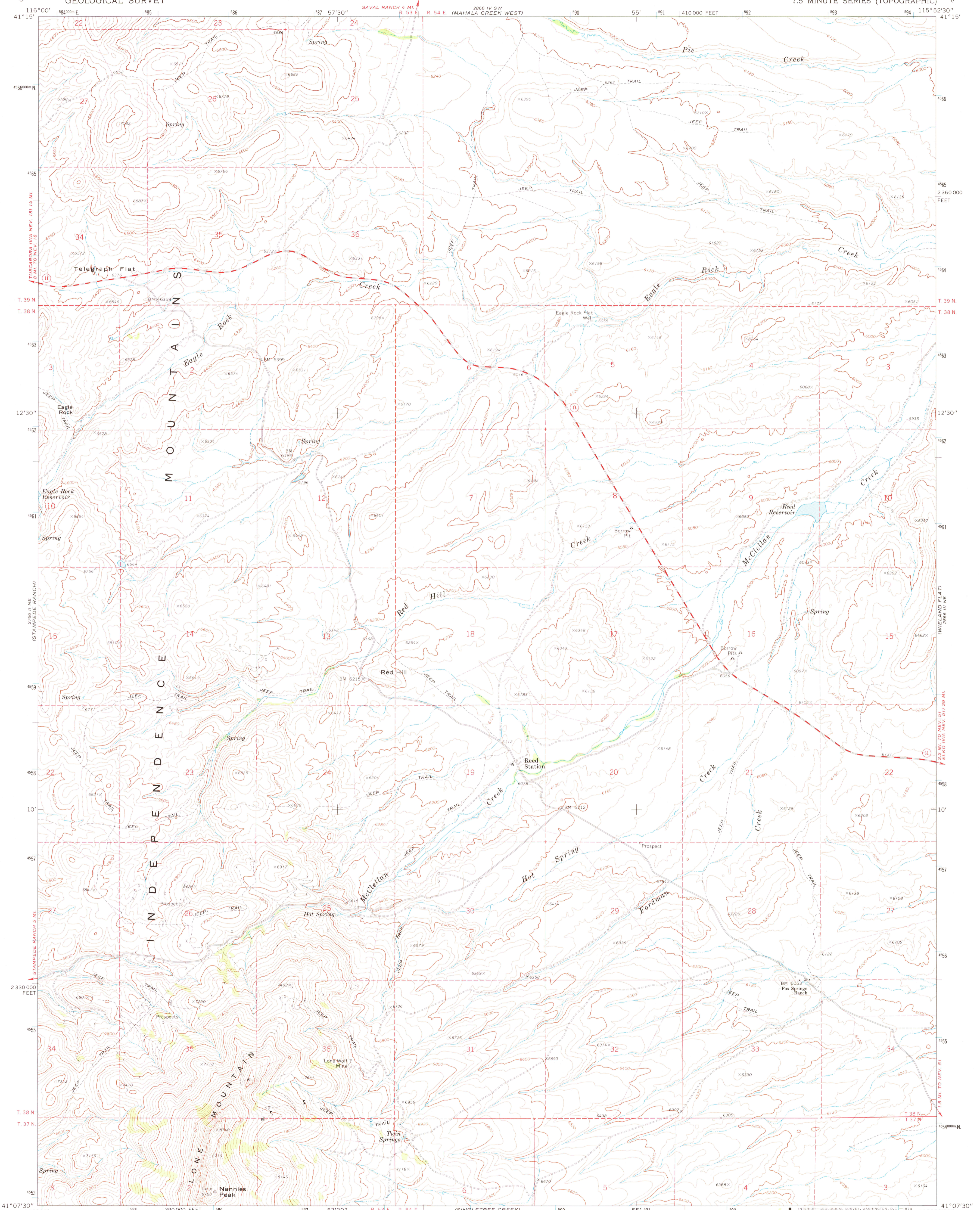
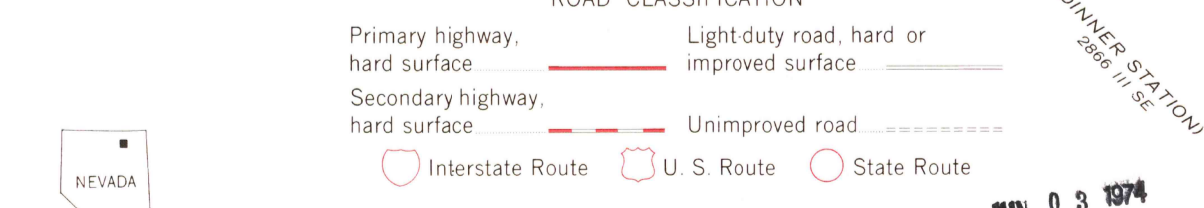
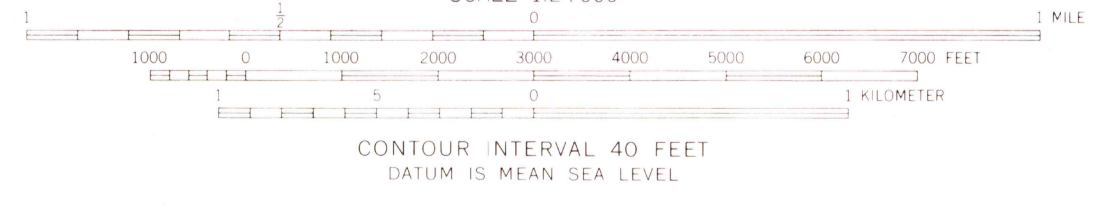
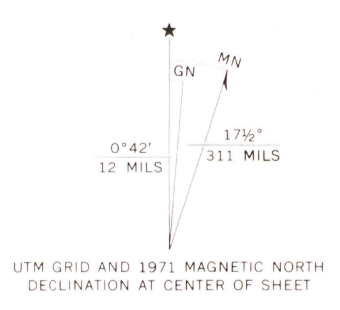


UNITED STATES
DEPARTMENT OF THE INTERIOR
GEOLOGICAL SURVEY

REED STATION QUADRANGLE
NEVADA—ELKO CO.
7.5 MINUTE SERIES (TOPOGRAPHIC)



Mapped, edited, and published by the Geological Survey
Control by USGS and USC&GS
Topography by photogrammetric methods from aerial photographs taken 1968. Field checked 1971
Projection and 10,000-foot grid ticks: Nevada coordinate system, east zone (transverse Mercator)
1000-meter Universal Transverse Mercator grid ticks, zone 11, shown in blue. 1927 North American datum
Fine red dashed lines indicate selected fence lines
Certain land lines are omitted because of insufficient data



THIS MAP COMPLIES WITH NATIONAL MAP ACCURACY STANDARDS
FOR SALE BY U.S. GEOLOGICAL SURVEY, DENVER, COLORADO 80225 OR WASHINGTON, D.C. 20242
A FOLDER DESCRIBING TOPOGRAPHIC MAPS AND SYMBOLS IS AVAILABLE ON REQUEST

QUADRANGLE LOCATION: NEVADA
 USGS Historical Topographic Series
 REED STATION, NEV. N4107.5-W11552.5/7.5
 1971
 AMS 2866 III NW—SERIES V896

JUN 03 1974
 2835