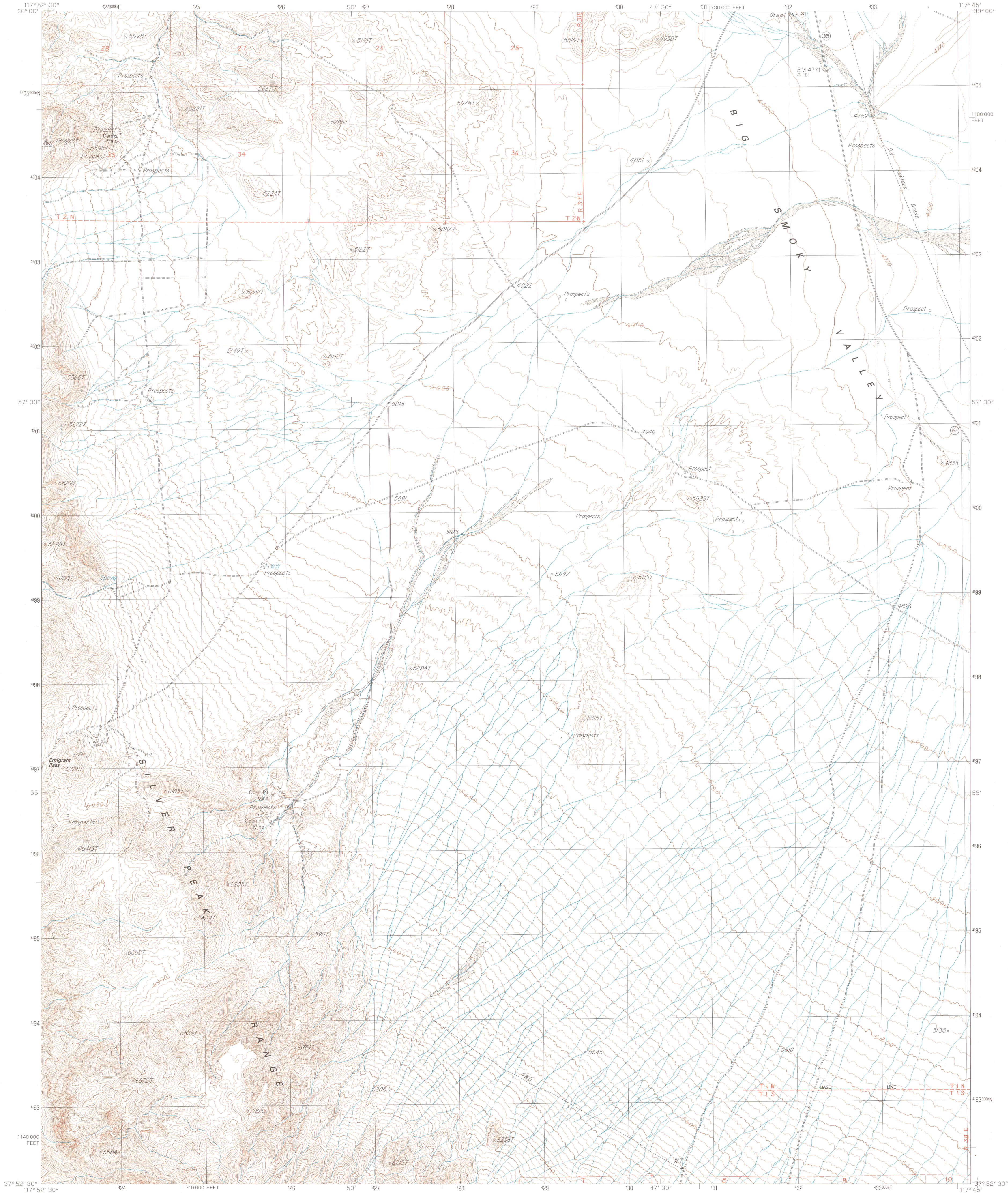


UNITED STATES
DEPARTMENT OF THE INTERIOR
GEOLOGICAL SURVEY

RHYOLITE RIDGE NE QUADRANGLE
NEVADA—ESMERALDA CO.
7.5 MINUTE SERIES (TOPOGRAPHIC)



PRODUCED BY THE UNITED STATES GEOLOGICAL SURVEY
CONTROL BY USGS, NOS/NOAA
COMPILED FROM AERIAL PHOTOGRAPHS TAKEN 1958
FIELD CHECKED 1963
LIMITED REVISION FROM AERIAL PHOTOGRAPHS TAKEN 1980 AND 1984
FIELD CHECKED 1985. MAP EDITED 1987
PROJECTION TRANSVERSE MERCATOR
GRID: 1000-METER UNIVERSAL TRANSVERSE MERCATOR ZONE 11
10,000-FOOT STATE GRID TICS NEVADA, WEST ZONE
UTM GRID DECLINATION 9°30' WEST
1980 MAGNETIC NORTH DECLINATION 15°30' EAST
VERTICAL DATUM NATIONAL GEODETIC VERTICAL DATUM OF 1929
HORIZONTAL DATUM 1927 NORTH AMERICAN DATUM
To place on the predicted North American Datum of 1983,
move the projection lines as shown by dashed corner ticks
(10 meters north and 82 meters east)
There may be private inholdings within the boundaries of any
Federal and State Reservations shown on this map
Public Land Survey System is shown as published in 1963 and
verified or supplemented in 1985
Where omitted, land lines have not been established or are not
shown because of insufficient data

PROVISIONAL MAP
Produced from original
manuscript drawings. Infor-
mation shown as of date of
field check.

SCALE 1:24 000
1 000 0 1000 2000
KILOMETERS
1 000 0 1000 2000
METERS
1000 0 1000 2000 3000 4000 5000 6000 7000 8000 9000 10 000
MILES
FEET
CONTOUR INTERVAL 20 FEET
SUPPLEMENTARY CONTOUR INTERVAL 10 FEET
To convert meters to feet multiply by 3.2808
To convert feet to meters multiply by 0.3048
THIS MAP COMPLIES WITH NATIONAL MAP ACCURACY STANDARDS
FOR SALE BY U.S. GEOLOGICAL SURVEY, DENVER, COLORADO 80225, OR RESTON, VIRGINIA 22092

NEVADA
QUADRANGLE LOCATION
1 2 3 4 5 6 7 8
1 Coaldale
2 Blair Junction
3 Devils Gate
4 Rhyolite Ridge NW
5 North Silver Peak
6 Rhyolite Ridge SW
7 Rhyolite Ridge
8 Silver Peak
ROAD LEGEND
Improved Road
Unimproved Road
Trail
Interstate Route U.S. Route State Route
RHYOLITE RIDGE NE, NEV.
PROVISIONAL EDITION 1987
37117-H7-TF-024

USGS MMD HISTORICAL MAP
JAN 5 1987
REC'D FILE COPY