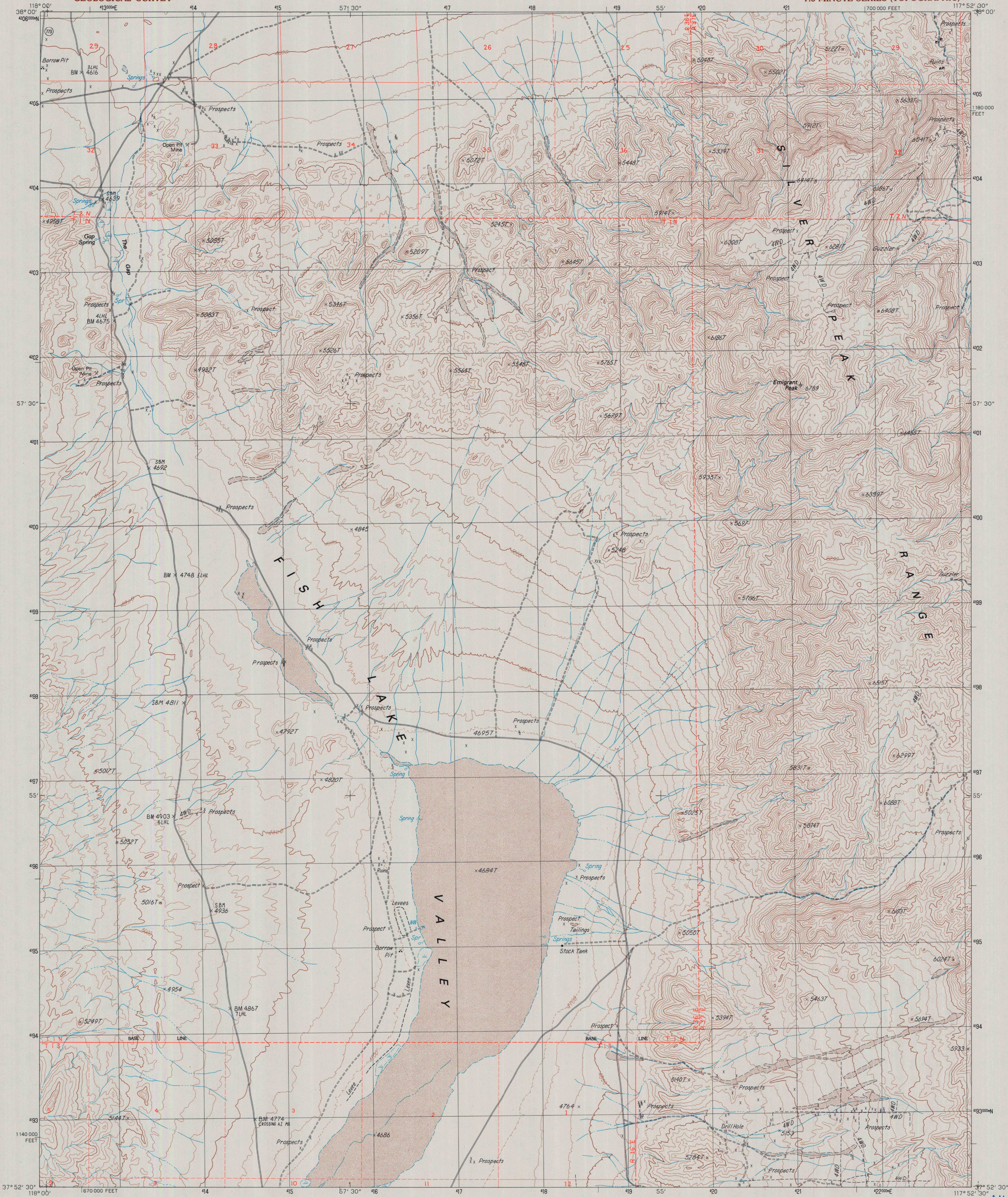


UNITED STATES
DEPARTMENT OF THE INTERIOR
GEOLOGICAL SURVEY

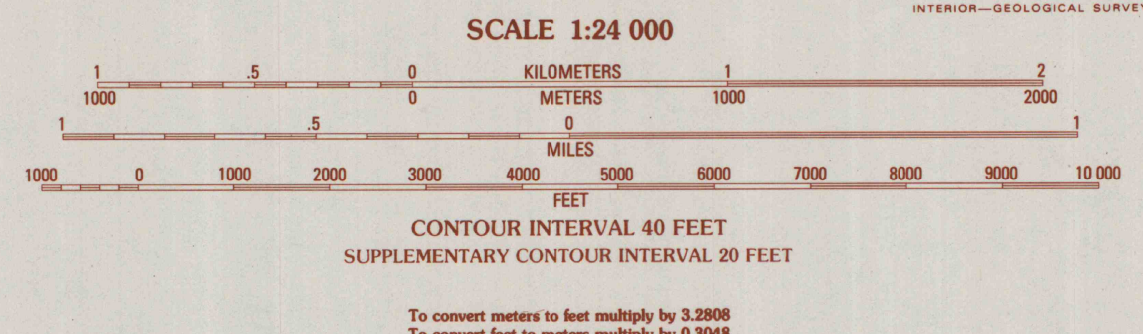
RHYOLITE RIDGE NW QUADRANGLE
NEVADA—ESMERALDA CO.
7.5 MINUTE SERIES (TOPOGRAPHIC)



PRODUCED BY THE UNITED STATES GEOLOGICAL SURVEY CONTROL BY THE UNITED STATES GEOLOGICAL SURVEY COMPILED FROM AERIAL PHOTOGRAPHS TAKEN 1958 FIELD CHECKED 1963 LIMITED REVISION FROM AERIAL PHOTOGRAPHS TAKEN 1984 FIELD CHECKED 1985 MAP EDITED 1987 PROJECTION TRANSVERSE MERCATOR GRID: 1000-METER UNIVERSAL TRANSVERSE MERCATOR 11 18-000-FOOT STATE GRID TICS NEVADA WEST ZONE UTM GRID DECLINATION 0°35' WEST 1980 MAGNETIC NORTH DECLINATION 15°50' EAST VERTICAL DATUM NATIONAL GEODETIC VERTICAL DATUM OF 1993 HORIZONTAL DATUM 1927 NORTH AMERICAN DATUM

To place on the predicted North American Datum of 1983, move the projection lines as shown by dashed corner ticks (10 meters north and 82 meters east). There may be private inholdings within the boundaries of any Federal and State Reservations shown on this map. Public Land Survey System is shown as published in 1963 and verified or supplemented in 1985. Where omitted, land lines have not been established.

PROVISIONAL MAP
Produced from original manuscript drawings. Information shown as of date of field check.



THIS MAP COMPLIES WITH NATIONAL MAP ACCURACY STANDARDS FOR SALE BY U.S. GEOLOGICAL SURVEY, DENVER, COLORADO 80225, OR RESTON, VIRGINIA 22092

ROAD LEGEND

Improved Road
Unimproved Road
Trail

Interstate Route U.S. Route State Route

QUADRANGLE LOCATION

1	2	3	4	5	6	7	8
Columbus	Coalvale	Blair Junction	Volcanic Hills East	Rhyolite Ridge NE	East of Davis Mtn.	Rhyolite Ridge SW	Rhyolite Ridge

ADJOINING 7.5' QUADRANGLE NAMES

RHYOLITE RIDGE NW, NEV.
PROVISIONAL EDITION 1987
37117-H8-TF-024

A.H. ROBINSON
MAP LIBRARY
APR 12 1988
University of Wisconsin
Madison

U.S. Regional
Depository Copy
DO NOT DISCARD