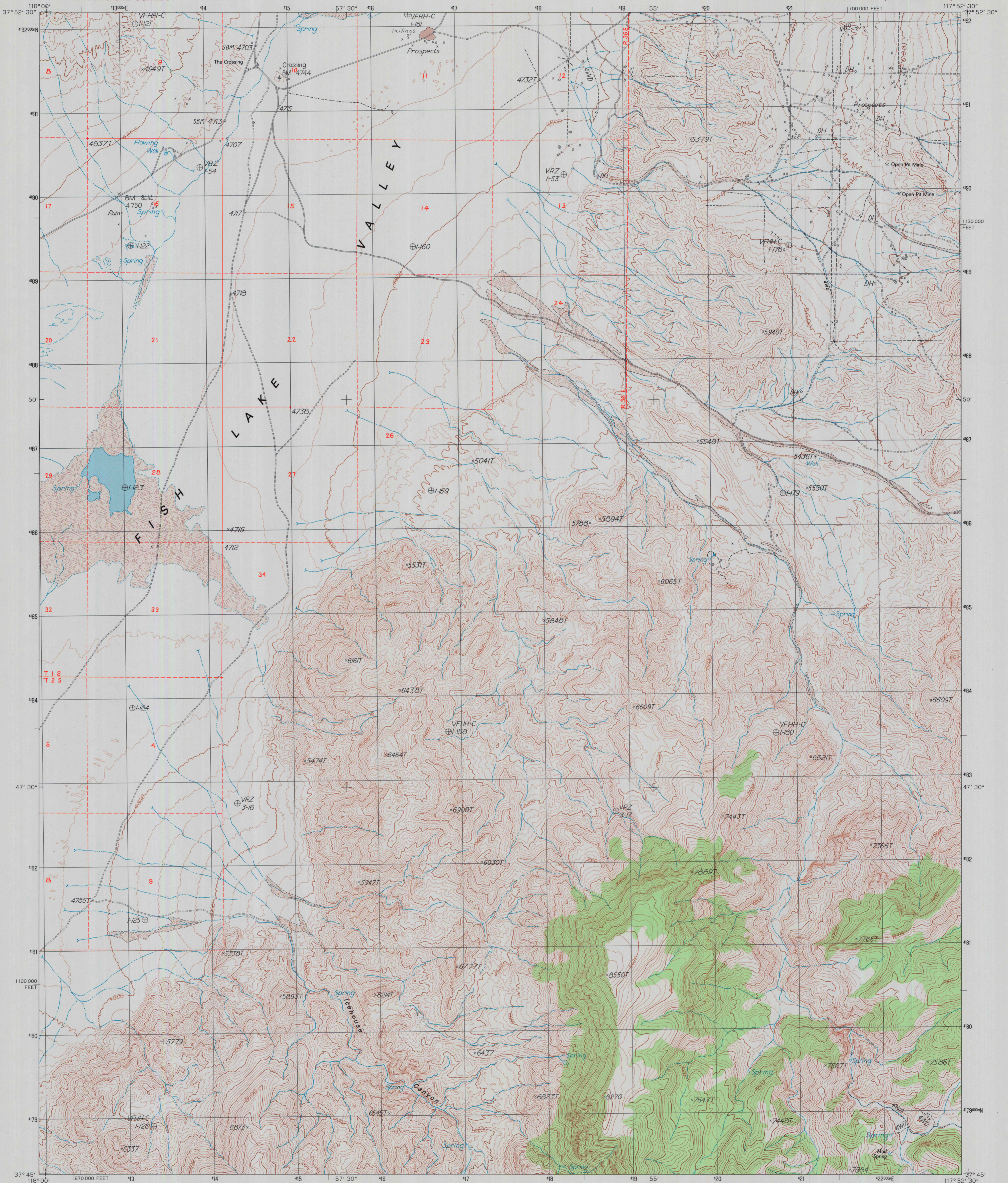
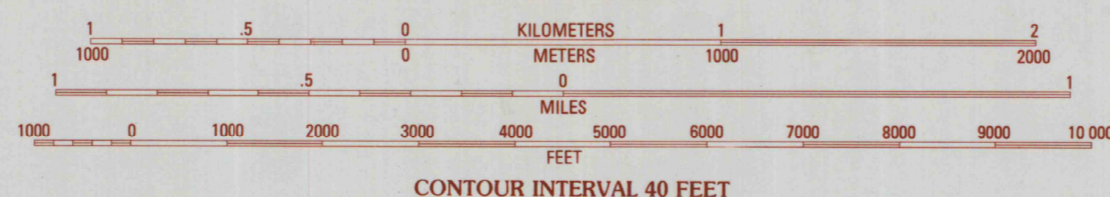


UNITED STATES
DEPARTMENT OF THE INTERIOR
GEOLOGICAL SURVEY

RHYOLITE RIDGE SW QUADRANGLE
NEVADA—ESMERALDA CO.
7.5 MINUTE SERIES (TOPOGRAPHIC)



SCALE 1:24 000



CONTOUR INTERVAL 40 FEET

To convert meters to feet multiply by 3.2808
To convert feet to meters multiply by 0.3048



QUADRANGLE LOCATION

1	2	3	1 Volcanic Hills East
2	3	2 Rhyolite Ridge NW	2 Rhyolite Ridge NE
3	4	3 Rhyolite Ridge NW	3 Rhyolite Ridge NE
4	5	4 East of Davis Mtn.	4 Dyer
5	6	5 Rhyolite Ridge	5 Dyer
6	7	6 Dyer	6 Dyer
7	8	7 Piper Peak	7 Mohawk Mine
8		8 Mohawk Mine	

ADJOINING 7.5' QUADRANGLE NAMES

ROAD LEGEND

- Improved Road.....
- Unimproved Road.....
- Trail.....
- Interstate Route.....
- U.S. Route.....
- State Route.....

RHYOLITE RIDGE SW, NEV.
PROVISIONAL EDITION 1987

37117-G8-TF-024

PRODUCED BY THE UNITED STATES GEOLOGICAL SURVEY CONTROL BY USGS, NOS/NOAA COMPILED FROM AERIAL PHOTOGRAPHS TAKEN 1958 PLANE TABLE SURVEY 1963 LIMITED REVISION FROM AERIAL PHOTOGRAPHS TAKEN 1984 FIELD CHECKED 1985. MAP EDITED 1987 PROJECTION TRANSVERSE MERCATOR GRID: 1000-METER UNIVERSAL TRANSVERSE MERCATOR ZONE 11 10,000-FOOT STATE GRID TICKS NEVADA WEST ZONE UTM GRID DECLINATION 0°34' WEST 1986 MAGNETIC NORTH DECLINATION 15°30' EAST VERTICAL DATUM NATIONAL GEODETIC VERTICAL DATUM OF 1929 HORIZONTAL DATUM 1927 NORTH AMERICAN DATUM

To place on the predicted North American Datum of 1983, move the projection lines as shown by dashed corner ticks (10 meters north and 82 meters east)

There may be private inholdings within the boundaries of any Federal and State Reservations shown on this map

Public Land Survey System is shown as published in 1963 and verified or supplemented in 1985

Where omitted land lines have not been established

PROVISIONAL MAP
Produced from original manuscript drawings. Information shown as of date of field check.

THIS MAP COMPLIES WITH NATIONAL MAP ACCURACY STANDARDS FOR SALE BY U.S. GEOLOGICAL SURVEY, DENVER, COLORADO 80225, OR RESTON, VIRGINIA 22092

A.H. ROBINSON
MAP LIBRARY

MAR 4 1988

University of Wisconsin
Madison

U.S. Regional
Depository Copy
DO NOT DISCARD