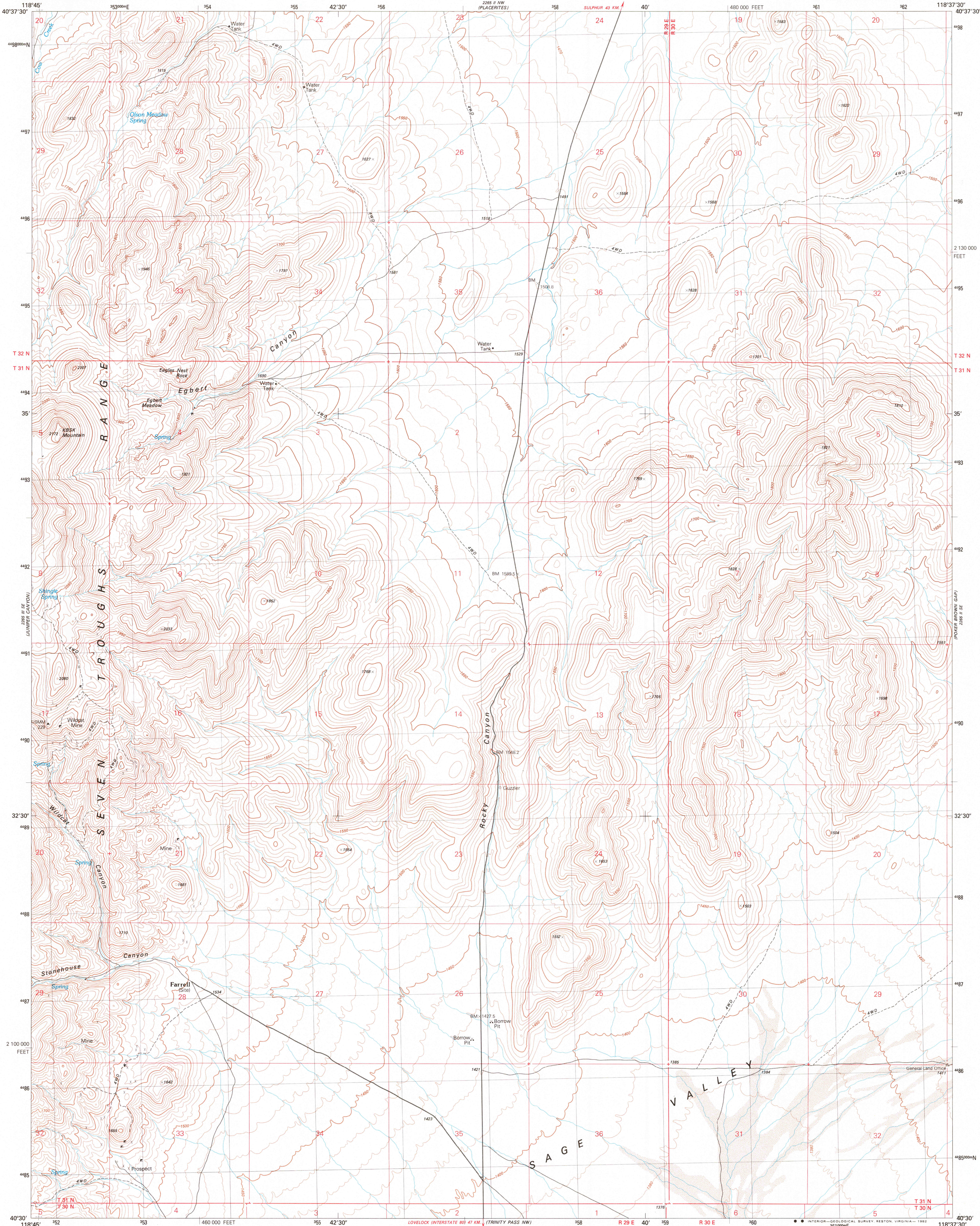


UNITED STATES
DEPARTMENT OF THE INTERIOR
GEOLOGICAL SURVEY

ROCKY CANYON QUADRANGLE
NEVADA-PERSHING CO.
7.5 MINUTE SERIES (TOPOGRAPHIC)



Produced by the United States Geological Survey

Control by USGS and NOS/NOAA

Compiled by photogrammetric methods from aerial photographs taken 1974. Field checked 1975. Map edited 1982

Projection and 1000-meter grid, zone 11,

Universal Transverse Mercator

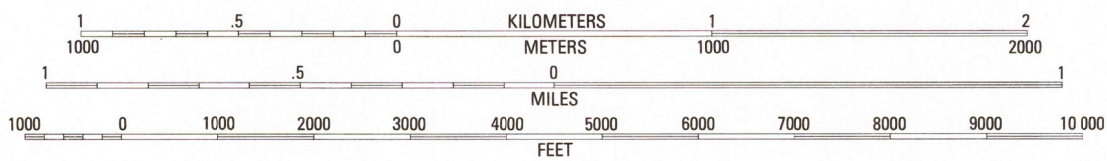
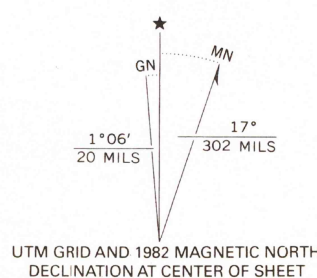
10,000-foot grid ticks based on Nevada coordinate

system, west zone. 1927 North American Datum

To place on the predicted North American Datum 1983

move the projection lines 14 meters north and

84 meters east as shown by dashed corner ticks



CONTOUR INTERVAL 10 METERS
NATIONAL GEODETIC VERTICAL DATUM 1929
CONTROL ELEVATIONS SHOWN TO THE NEAREST 0.1 METER
OTHER ELEVATIONS SHOWN TO THE NEAREST METER
TO CONVERT METERS TO FEET MULTIPLY BY 3.2808
TO CONVERT FEET TO METERS MULTIPLY BY 0.3048

THIS MAP COMPLIES WITH NATIONAL MAP ACCURACY STANDARDS
FOR SALE BY U. S. GEOLOGICAL SURVEY, DENVER, COLORADO 80225, OR RESTON, VIRGINIA 22092
A FOLDER DESCRIBING TOPOGRAPHIC MAPS AND SYMBOLS IS AVAILABLE ON REQUEST



CONTOURS AND ELEVATIONS
IN METERS

ROAD CLASSIFICATION

Primary highway,
hard surface Light-duty road, hard or
improved surface
Secondary highway,
hard surface Unimproved road
Interstate Route U. S. Route State Route

ROCKY CANYON, NEV.
N4030-W11837.5/7.5

1982

DMA 2265 II SW-SERIES V896

FEB 1 1983
RETURN TO:
USGS AND HISTORICAL MAP ARCHIVES
1910