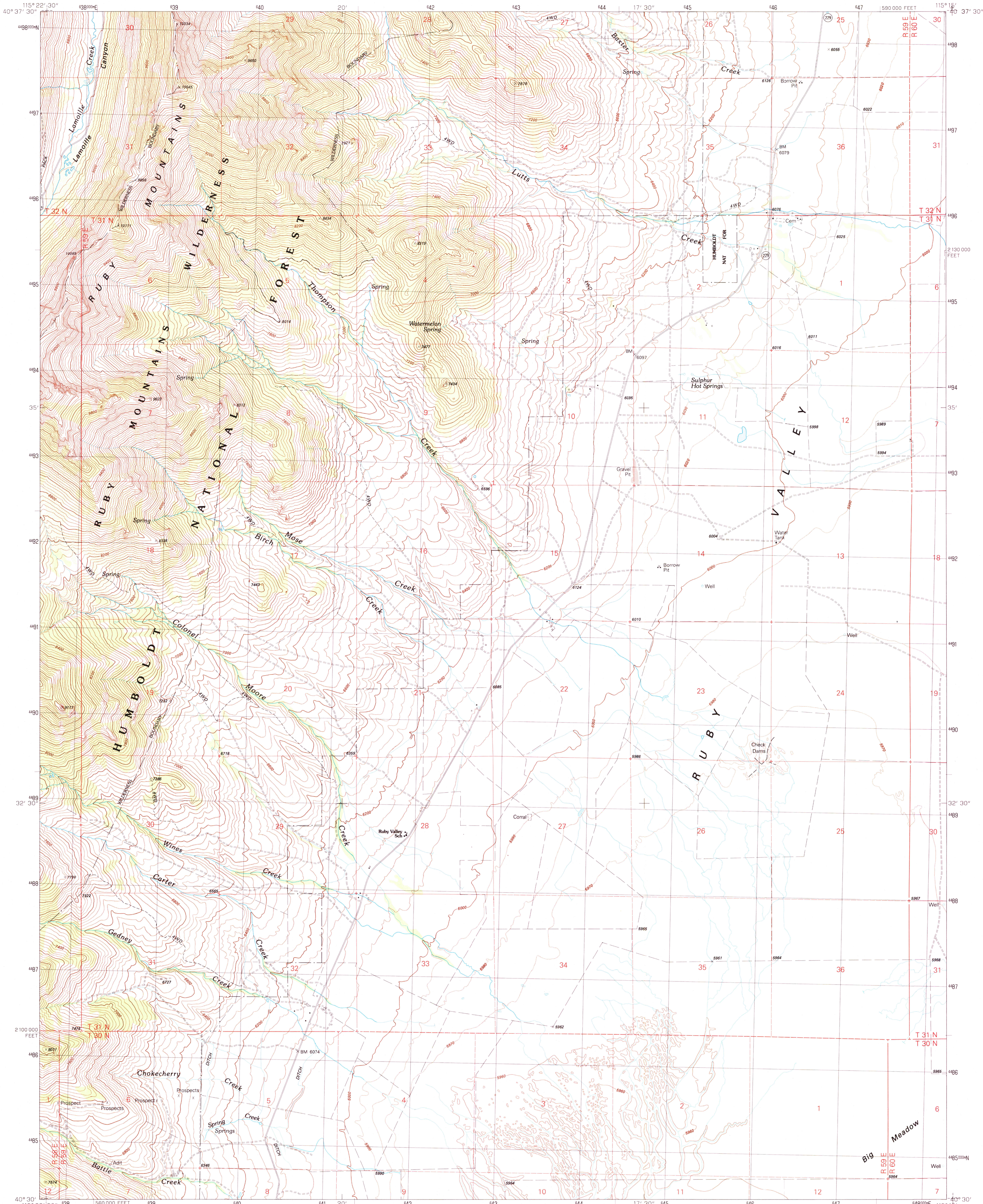


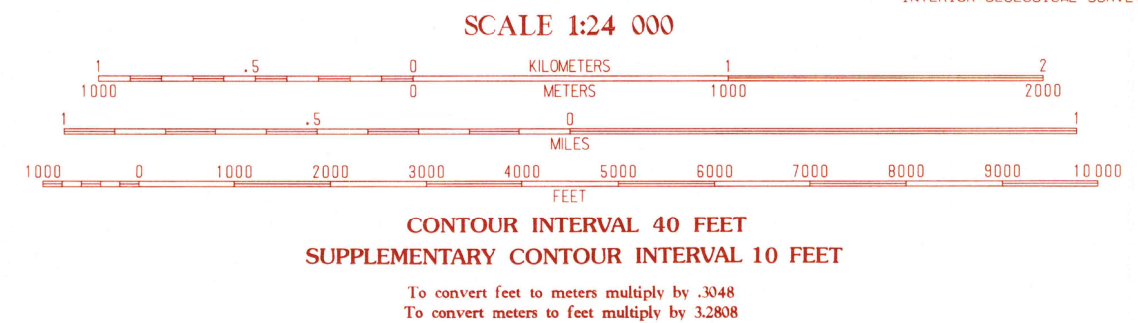
UNITED STATES  
DEPARTMENT OF THE INTERIOR  
GEOLOGICAL SURVEY

RUBY VALLEY SCHOOL QUADRANGLE  
NEVADA-ELKO CO.  
7.5 MINUTE SERIES (TOPOGRAPHIC)



PRODUCED BY THE UNITED STATES GEOLOGICAL SURVEY  
CONTROL BY . . . . . USGS, NOS/NOAA  
COMPILED FROM AERIAL PHOTOGRAPHS TAKEN . . . . . 1960  
FIELD CHECKED . . . . . 1962  
LIMITED REVISION FROM AERIAL PHOTOGRAPHS TAKEN . . . . . 1980, 1984 AND 1985  
FIELD CHECKED . . . . . 1989 MAP EDITED . . . . . 1990  
PROJECTION . . . . . TRANSVERSE MERCATOR  
GRID 100-METER UNIVERSAL TRANSVERSE MERCATOR . . . . . ZONE 11  
1000-FOOT STATE GRID TICKS . . . . . NEVADA, EAST ZONE  
UTM GRID DECLINATION . . . . . 196° EAST  
1990 MAGNETIC NORTH DECLINATION . . . . . 15° EAST  
VERTICAL DATUM . . . . . NATIONAL GEODETIC VERTICAL DATUM OF 1929  
HORIZONTAL DATUM . . . . . 1927 NORTH AMERICAN DATUM  
To place on the predicted North American Datum of 1983,  
move the projection lines as shown by dashed corner ticks  
(12 meters north and 74 meters east)  
There may be private inholdings within the boundaries of any  
Federal and State Reservations shown on this map  
Where omitted, land lines have not been established  
Public Land Survey System is shown as published in 1962 and  
verified or supplemented in 1989

PROVISIONAL MAP  
Produced from original  
manuscript drawings. Informa-  
tion shown as of date of  
field check. T



THIS MAP COMPLIES WITH NATIONAL MAP ACCURACY STANDARDS  
FOR SALE BY U.S. GEOLOGICAL SURVEY, DENVER, COLORADO 80225  
OR RESTON, VIRGINIA 22092

QUADRANGLE LOCATION

1	2	3
4	5	6
7	8	9

ADJOINING 7.5' QUADRANGLE NAMES

1	Lamelle
2	Vend Peak
3	Ruby Valley Creek
4	Ruby Dome
5	Smith Well
6	Franklin Lake NW
7	Franklin Lake NE
8	West of Deer Butte

ROAD LEGEND  
Improved Road . . . . .  
Unimproved Road . . . . .  
Trail . . . . .  
Interstate Route U.S. Route State Route  
RUBY VALLEY SCHOOL, NEVADA  
PROVISIONAL EDITION 1990  
40115-E3-TF-024

USGS NAD HISTORICAL MAP  
JUL 10 1991  
REC'D FILE COPY