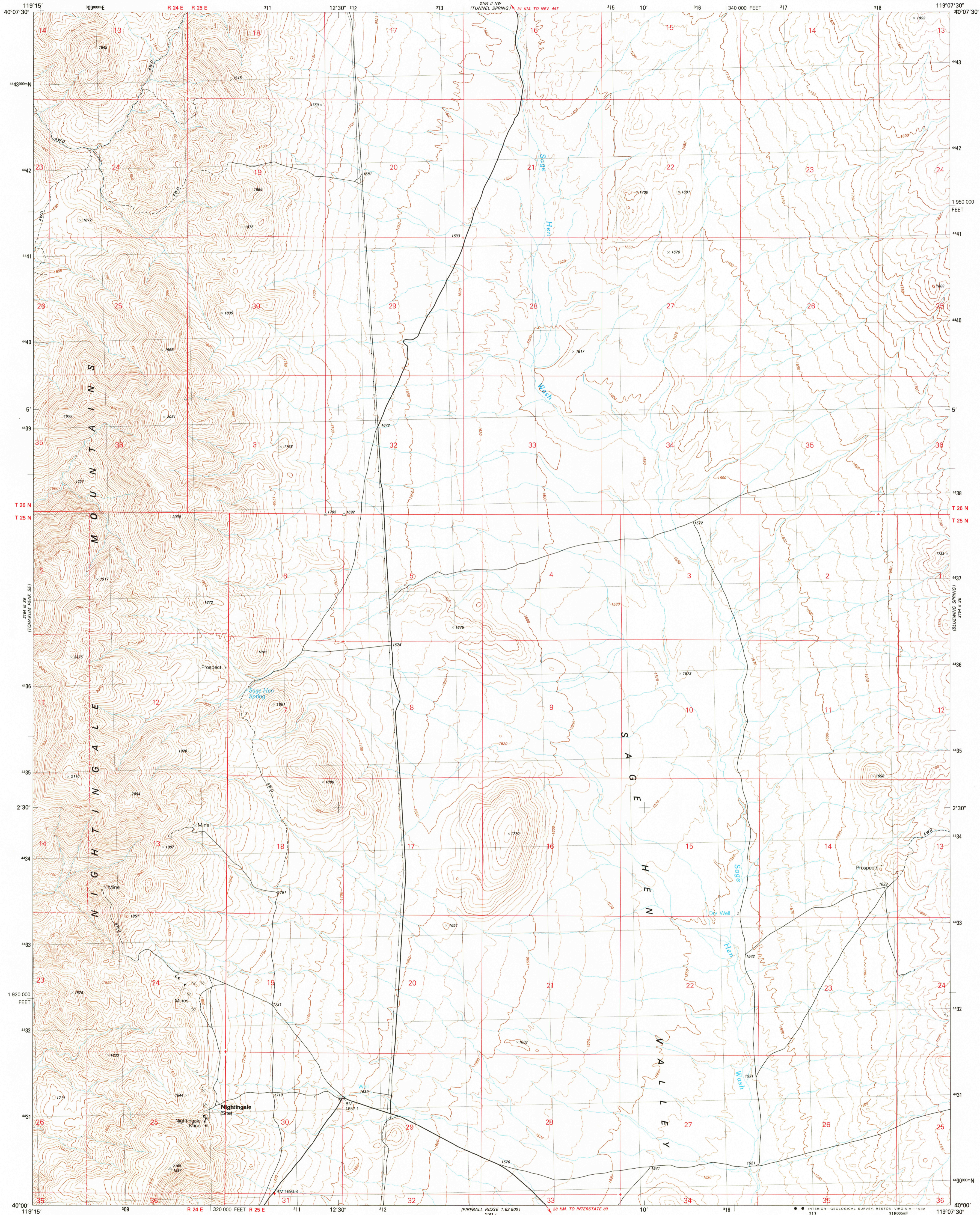
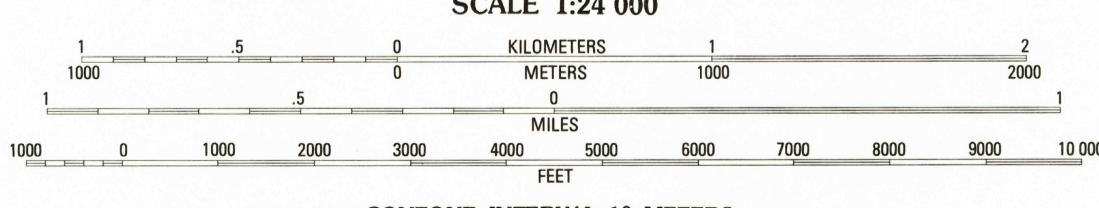
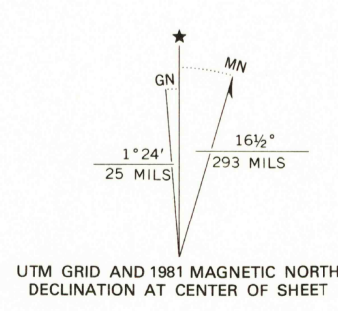


UNITED STATES
DEPARTMENT OF THE INTERIOR
GEOLOGICAL SURVEY

SAGE HEN SPRING QUADRANGLE
NEVADA-PERSHING CO.
7.5 MINUTE SERIES (TOPOGRAPHIC)



Produced by the United States Geological Survey
Control by USGS and NOS/NOAA
Compiled by photogrammetric methods from aerial photographs taken 1974. Field checked 1975. Map edited 1981
Projection and 1000-meter grid, zone 11, Universal Transverse Mercator
10,000-foot grid ticks based on Nevada coordinate system, west zone. 1927 North American Datum
To place on the predicted North American Datum 1983 move the projection lines 14 meters north and 86 meters east as shown by dashed corner ticks



CONTOUR INTERVAL 10 METERS
NATIONAL GEODETIC VERTICAL DATUM OF 1929
CONTROL ELEVATIONS SHOWN TO THE NEAREST 0.1 METER
OTHER ELEVATIONS SHOWN TO THE NEAREST METER
TO CONVERT METERS TO FEET MULTIPLY BY 3.2808
TO CONVERT FEET TO METERS MULTIPLY BY 0.3048

ROAD CLASSIFICATION
Primary highway, hard surface Light-duty road, hard or improved surface ..
Secondary highway, hard surface Unimproved road ..
Interstate Route U. S. Route State Route

CONTOURS AND ELEVATIONS IN METERS

SAGE HEN SPRING, NEV.
N4000-W1907.5/7.5
1981

THIS MAP COMPLIES WITH NATIONAL MAP ACCURACY STANDARDS
FOR SALE BY U. S. GEOLOGICAL SURVEY, DENVER, COLORADO 80225, OR RESTON, VIRGINIA 22092
A FOLDER DESCRIBING TOPOGRAPHIC MAPS AND SYMBOLS IS AVAILABLE ON REQUEST

DMA 2164 II SW-SERIES V896

DEC 03 1992
RETURN TO USGS AND HISTORICAL MAP ARCHIVES