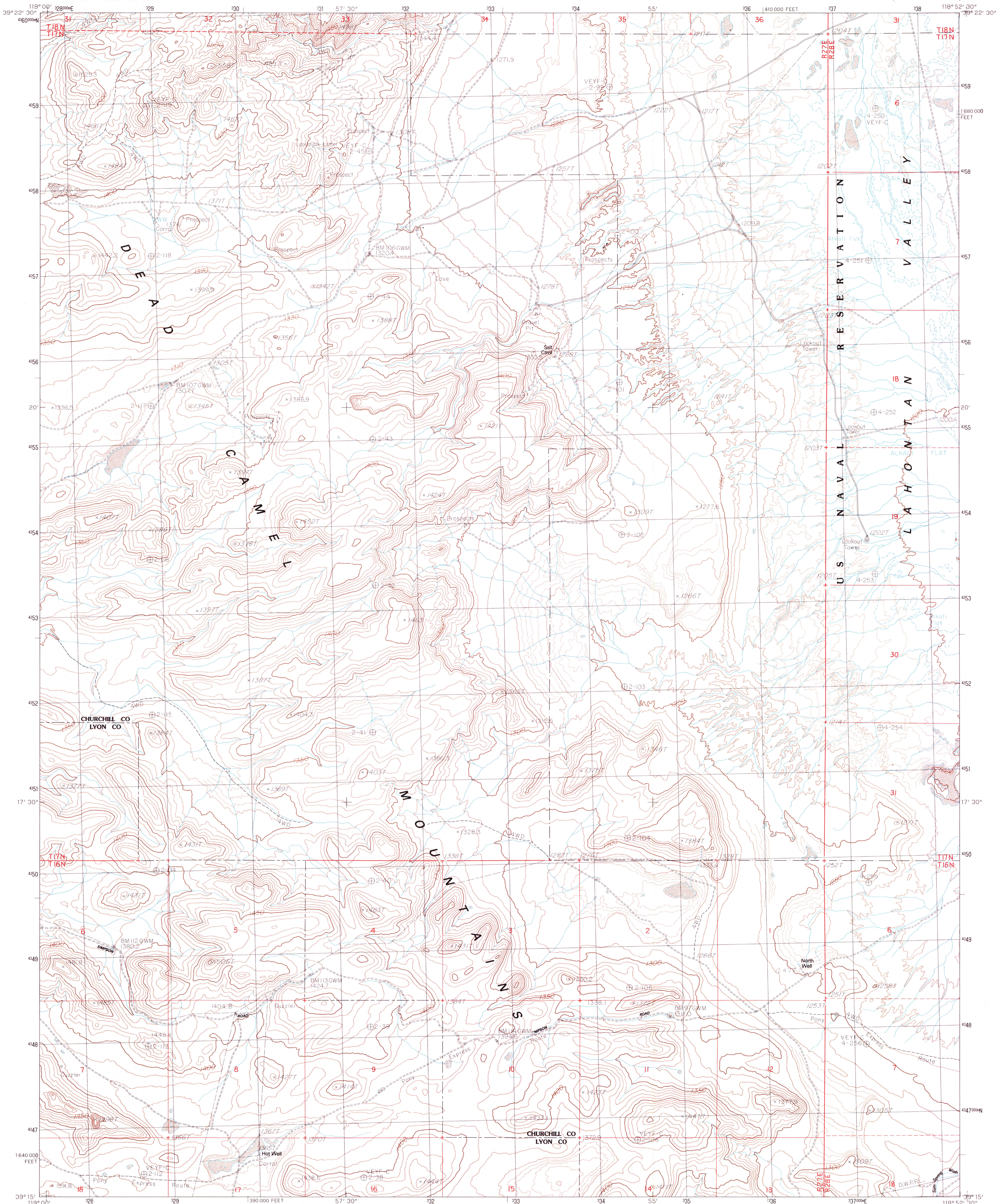


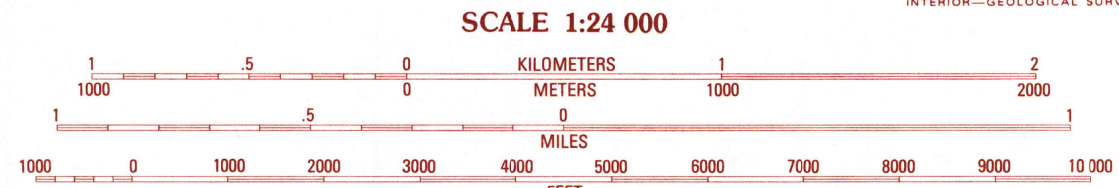
UNITED STATES
DEPARTMENT OF THE INTERIOR
GEOLOGICAL SURVEY

SALT CAVE QUADRANGLE
NEVADA
7.5 MINUTE SERIES (TOPOGRAPHIC)



PRODUCED BY THE UNITED STATES GEOLOGICAL SURVEY
CONTROL BY USGS, NOS/NOAA
COMPILED FROM AERIAL PHOTOGRAPHS TAKEN 1980
FIELD CHECKED 1981. MAP EDITED 1985
PROJECTION UNIVERSAL TRANSVERSE MERCATOR
GRID: 1000-METER UNIVERSAL TRANSVERSE MERCATOR ZONE 11
10,000-FOOT STATE GRID TICS NEVADA, WEST ZONE
UTM GRID DECLINATION 174° WEST
1980 MAGNETIC NORTH DECLINATION 16°30' EAST
VERTICAL DATUM NATIONAL GEODETIC DATUM OF 1929
HORIZONTAL DATUM 1927 NORTH AMERICAN DATUM
To place on the predicted North American Datum of 1983,
move the projection lines as shown by dashed corner ticks
(13 meters north / 85 meters east)
There may be private inholdings within the boundaries of any
Federal and State Reservations shown on this map.
Where omitted, land lines have not been established

PROVISIONAL MAP
Produced from original
manuscript drawings. Infor-
mation shown as of date of
field check. 2



CONTOUR INTERVAL 10 METERS
SUPPLEMENTAL CONTOUR INTERVAL 2 METERS
CONTROL ELEVATIONS SHOWN TO THE NEAREST 0.1 METER
OTHER ELEVATIONS SHOWN TO THE NEAREST METER
To convert meters to feet multiply by 3.2808
To convert feet to meters multiply by 0.3048

THIS MAP COMPLIES WITH NATIONAL MAP ACCURACY STANDARDS
FOR SALE BY U.S. GEOLOGICAL SURVEY, DENVER, COLORADO 80225, OR RESTON, VIRGINIA 22092

1	2	3	1 Lamoine Dam
4	5	2 Shekeller Reservoir	
6	7	3 Fallon	
		4 Hooten Well	
		5 South of Fallon	
		6 Parker Butte	
		7 Wild Horse Basin	
		8 Russell Spit	

ADJOINING 7.5 QUADRANGLE NAMES

CONTOURS AND ELEVATIONS IN METERS
ROAD LEGEND
Improved Road
Unimproved Road
Trail
Interstate Route U.S. Route State Route

SALT CAVE, NEV.
PROVISIONAL EDITION 1985

39118-C8-TM-024