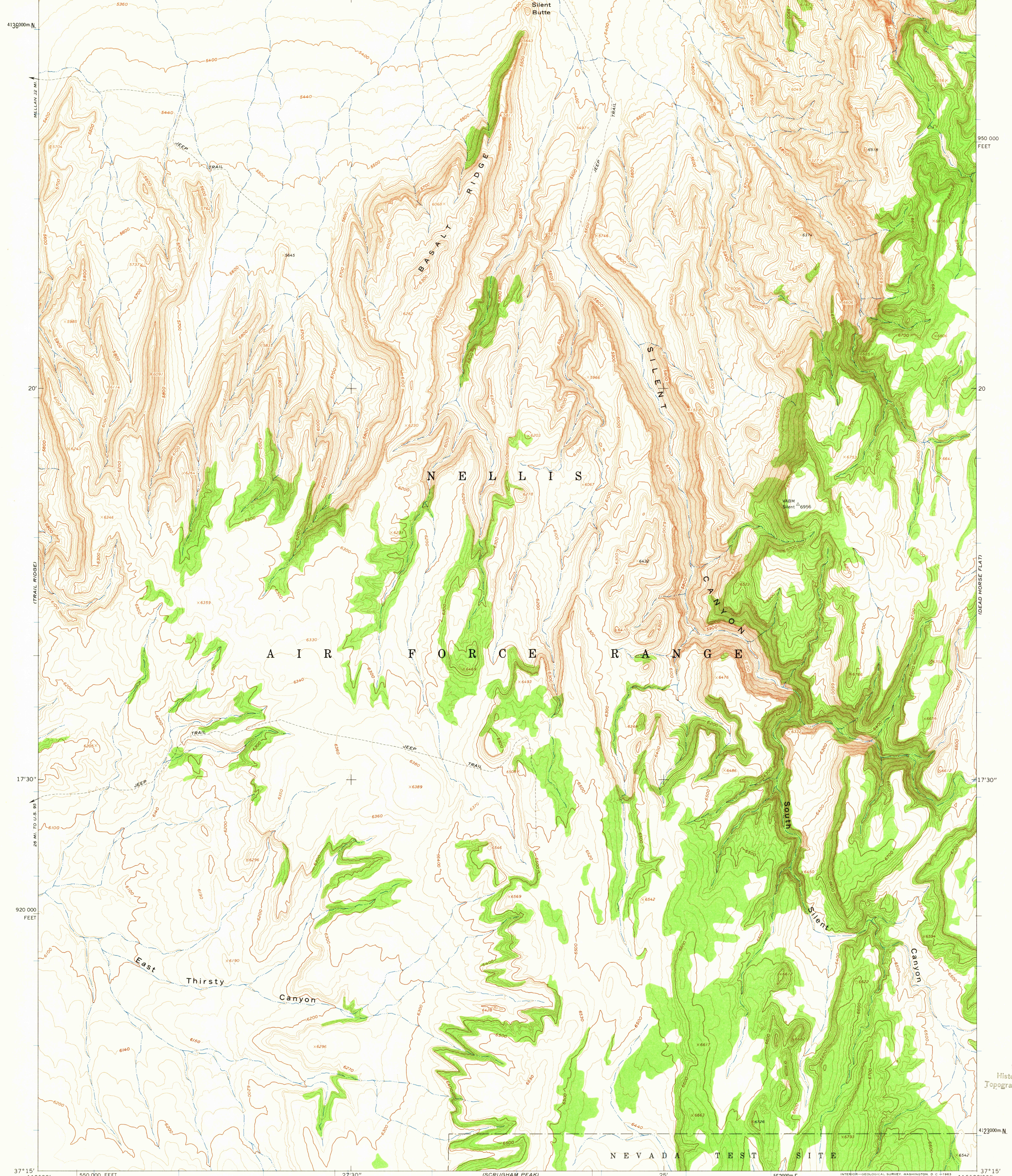
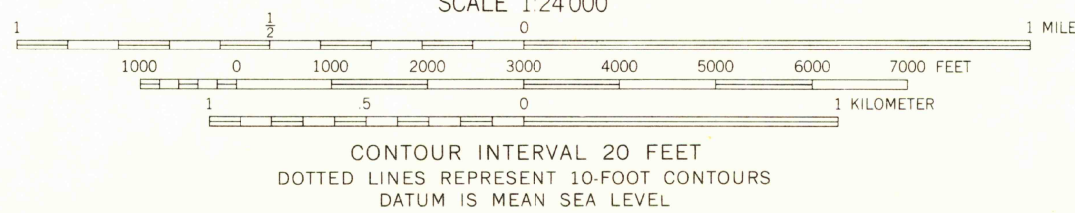
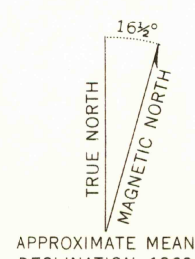


116°30' 27°22'30" 545000m E 27°30' (SILENT CANYON 1:62 500) 7.5 MI. TO GOLD FLAT WELL NO. 2 25' 580 000 FEET 116°22'30" 37°22'30"



Mapped, edited, and published by the Geological Survey
in cooperation with the Atomic Energy Commission
Control by USGS and USC&GS
Topography by photogrammetric methods from aerial
photographs taken 1961. Field checked 1962
Polyconic projection, 1927 North American datum
10,000-foot grid based on Nevada coordinate system, central zone
1000-meter Universal Transverse Mercator grid ticks,
zone 11, shown in blue



ROAD CLASSIFICATION
Trails

SILENT BUTTE, NEV.
SW/4 SILENT CANYON 15' QUADRANGLE
N3715—W11622.5/7.5

1962

THIS MAP COMPLIES WITH NATIONAL MAP ACCURACY STANDARDS
FOR SALE BY U. S. GEOLOGICAL SURVEY, DENVER 25, COLORADO OR WASHINGTON 25, D. C.
A FOLDER DESCRIBING TOPOGRAPHIC MAPS AND SYMBOLS IS AVAILABLE ON REQUEST

USGS
Historical File
Topographic Division

DEC 17 1963