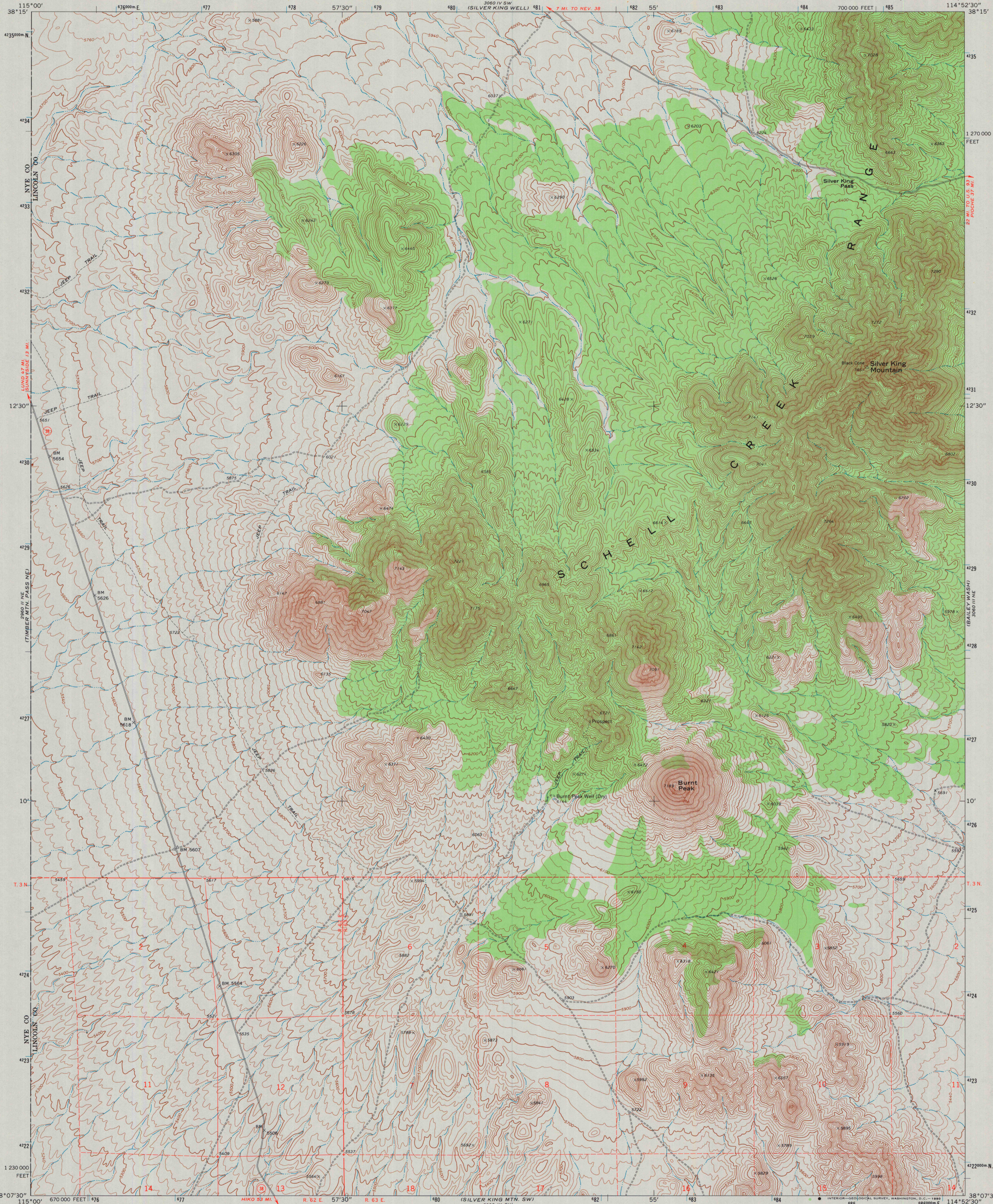
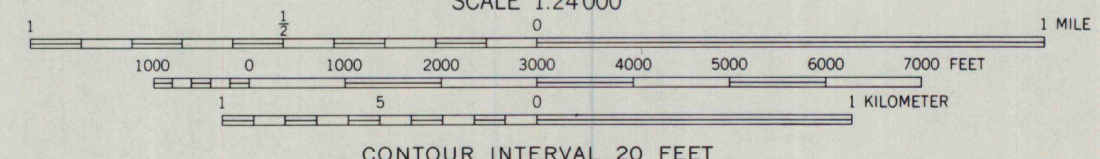
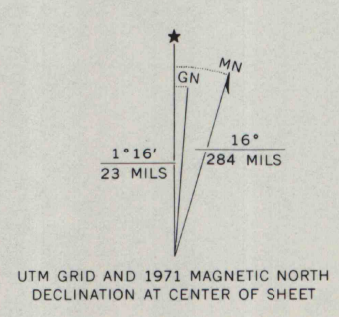


UNITED STATES
DEPARTMENT OF THE INTERIOR
GEOLOGICAL SURVEY

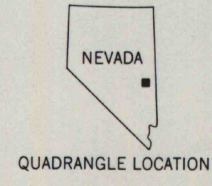
SILVER KING MTN. QUADRANGLE
NEVADA-LINCOLN CO.
7.5 MINUTE SERIES (TOPOGRAPHIC)



Mapped, edited, and published by the Geological Survey
Control by USGS and USC&GS
Topography by photogrammetric methods from aerial
photographs taken 1970. Field checked 1971
Projection and 10,000-foot grid ticks: Nevada coordinate
system, east zone (transverse Mercator)
1000-meter Universal Transverse Mercator grid ticks,
zone 11, shown in blue. 1927 North American datum
Where omitted, land lines have not been established or
are not shown because of insufficient data
Map photospcted 1980
No major culture or drainage changes observed



CONTOUR INTERVAL 20 FEET
DATUM IS MEAN SEA LEVEL



ROAD CLASSIFICATION

Primary highway, hard surface	Light-duty road, hard or improved surface
Secondary highway, hard surface	Unimproved road
Interstate Route	U. S. Route
	State Route

THIS MAP COMPLIES WITH NATIONAL MAP ACCURACY STANDARDS
FOR SALE BY U. S. GEOLOGICAL SURVEY, DENVER, COLORADO 80225, OR RESTON, VIRGINIA 22092
A FOLDER DESCRIBING TOPOGRAPHIC MAPS AND SYMBOLS IS AVAILABLE ON REQUEST

SILVER KING MTN., NEV.
N3807.5-W11452.5/7.5
1971
PHOTOINSPECTED 1980
AMS 3060 III NW-SERIES V896

U.S. Regional
Depository Copy
DO NOT DISCARD
A.H. ROBINSON
MAP LIBRARY
APR 10 1991
University of Wisconsin
Madison