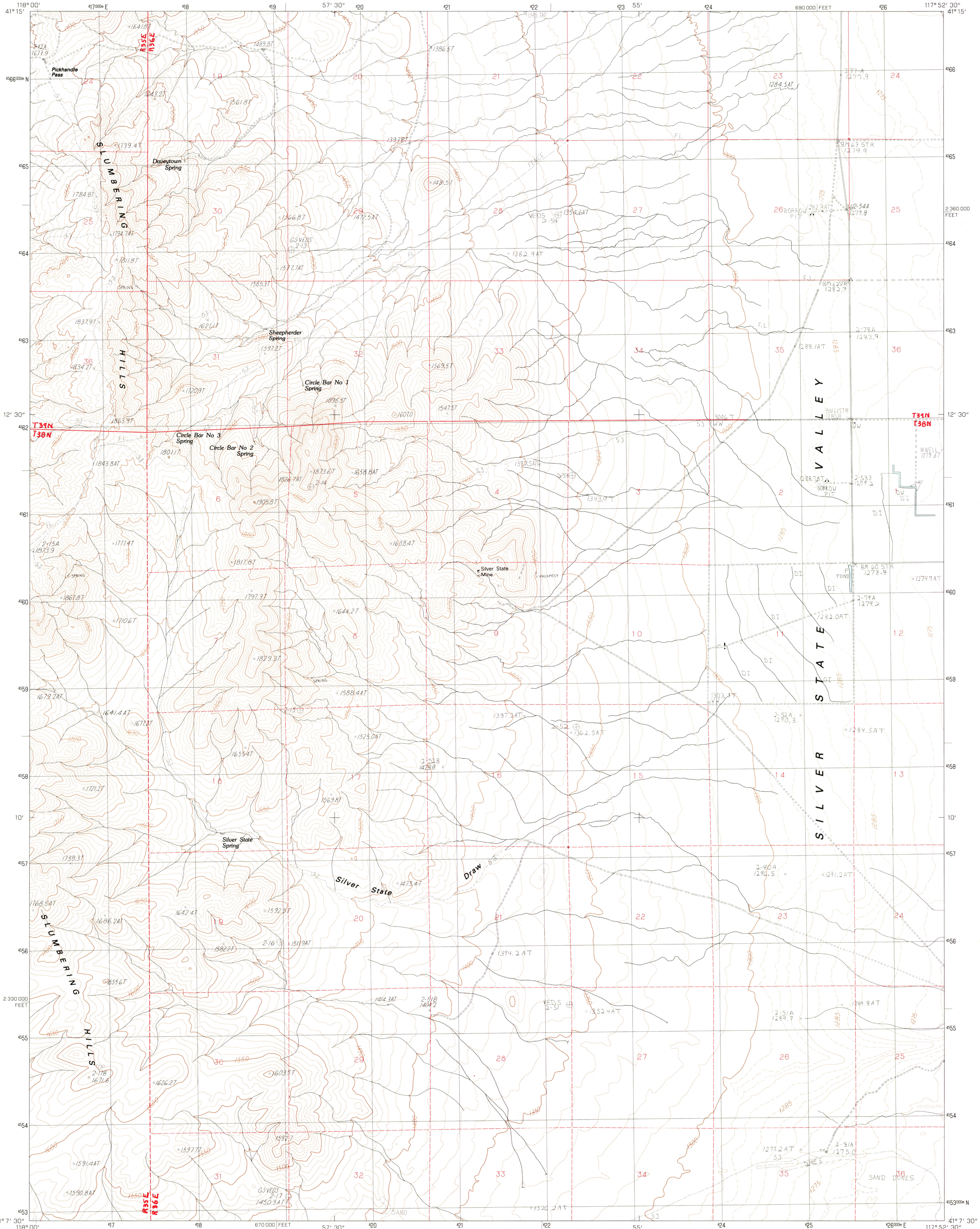


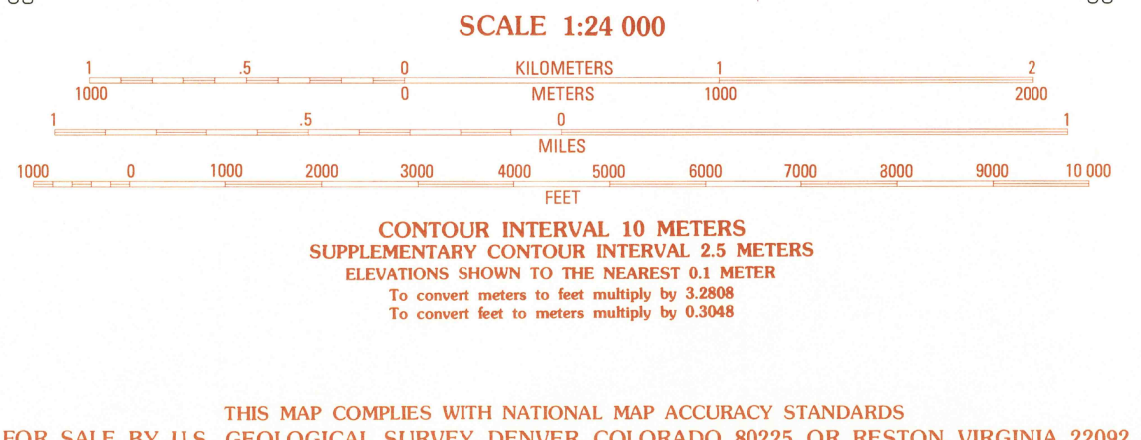
UNITED STATES
DEPARTMENT OF THE INTERIOR
GEOLOGICAL SURVEY

SILVER STATE DRAW QUADRANGLE
NEVADA—HUMBOLDT CO.
7.5 MINUTE SERIES (TOPOGRAPHIC)



PRODUCED BY THE UNITED STATES GEOLOGICAL SURVEY
CONTROL BY USGS, NOS/NOAA
COMPILED FROM AERIAL PHOTOGRAPHS TAKEN 1976
FIELD CHECKED 1977 MAP EDITED 1982
PROJECTION UNIVERSAL TRANSVERSE MERCATOR
GRID 1000-METER UNIVERSAL TRANSVERSE MERCATOR ZONE 11
UTM GRID DECLINATION NEVADA, WEST ZONE
10,000-FOOT STATE GRID TICKS 17 EAST
1980 MAGNETIC NORTH DECLINATION 0987
VERTICAL DATUM NATIONAL GEODETIC VERTICAL DATUM OF 1929
HORIZONTAL DATUM 1927 NORTH AMERICAN DATUM
To place on the predicted North American Datum of 1983,
move the projection lines as shown by dashed corner ticks
(14 meters north/81 meters east)
There may be private inholdings within the boundaries of any
Federal and State Reservations shown on this map
Certain land lines are omitted because of insufficient data

PROVISIONAL MAP
Produced from original
manuscript drawings. Information
shown as of date of
field check



ROAD LEGEND

Improved Road
Unimproved Road
Trail

Interstate Route U.S. Route State Route

QUADRANGLE LOCATION

ADJOINING 7.5 QUADRANGLE NAMES

1	2	3	1 Jackson Well
4	5	6	2 Awakening Peak
7	8	7	3 Mud Spring Canyon
		8	4 Sombreiro Peak
			5 Bloody Run Peak
			6 Mormon Dan Butte
			7 Barrett Springs
			8 Winnemucca Mtn

SILVER STATE DRAW, NEVADA
PROVISIONAL EDITION 1982
41117-B8-TM-024

DEC 03 1982
RETURN TO:
USGS MMD HISTORICAL MAP ARCHIVES
1950