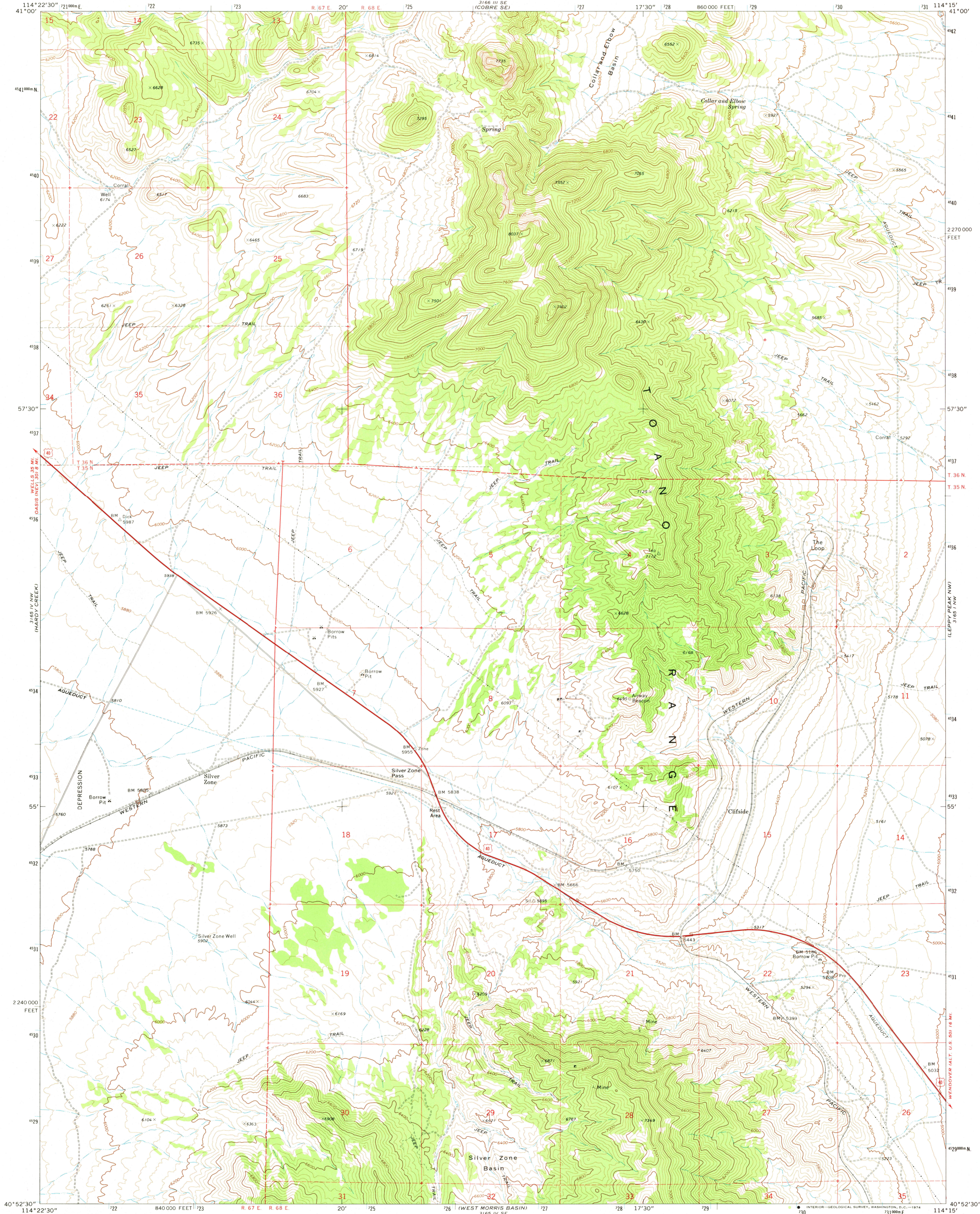


UNITED STATES
DEPARTMENT OF THE INTERIOR
GEOLOGICAL SURVEY

SILVER ZONE PASS QUADRANGLE
NEVADA—ELKO CO.
7.5 MINUTE SERIES (TOPOGRAPHIC)



Mapped, edited, and published by the Geological Survey

Control by USGS and USC&GS

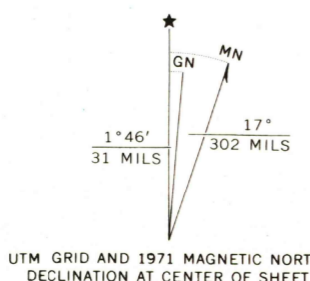
Topography by photogrammetric methods from aerial photographs taken 1970. Field checked 1971

Projection and 10,000-foot grid ticks: Nevada coordinate system, east zone (transverse Mercator)

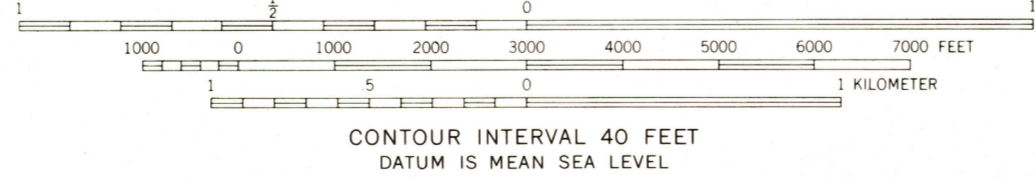
1000-meter Universal Transverse Mercator grid ticks, zone 11, shown in blue. 1927 North American datum

Fine red dashed lines indicate selected fence lines

Certain land lines are omitted because of insufficient data



UTM GRID AND 1971 MAGNETIC NORTH DECLINATION AT CENTER OF SHEET



CONTOUR INTERVAL 40 FEET

DATUM IS MEAN SEA LEVEL



QUADRANGLE LOCATION

ROAD CLASSIFICATION	
Primary highway, hard surface	Light-duty road, hard or improved surface
Secondary highway, hard surface	Unimproved road
Interstate Route	U. S. Route
	State Route

SILVER ZONE PASS, NEV.
N4052.5—W11415.7.5

1971

AMS 3165 IV NE—SERIES V896

USGS
HISTORICAL FILE
TOPOGRAPHIC DIVISION

SEP 23 1974