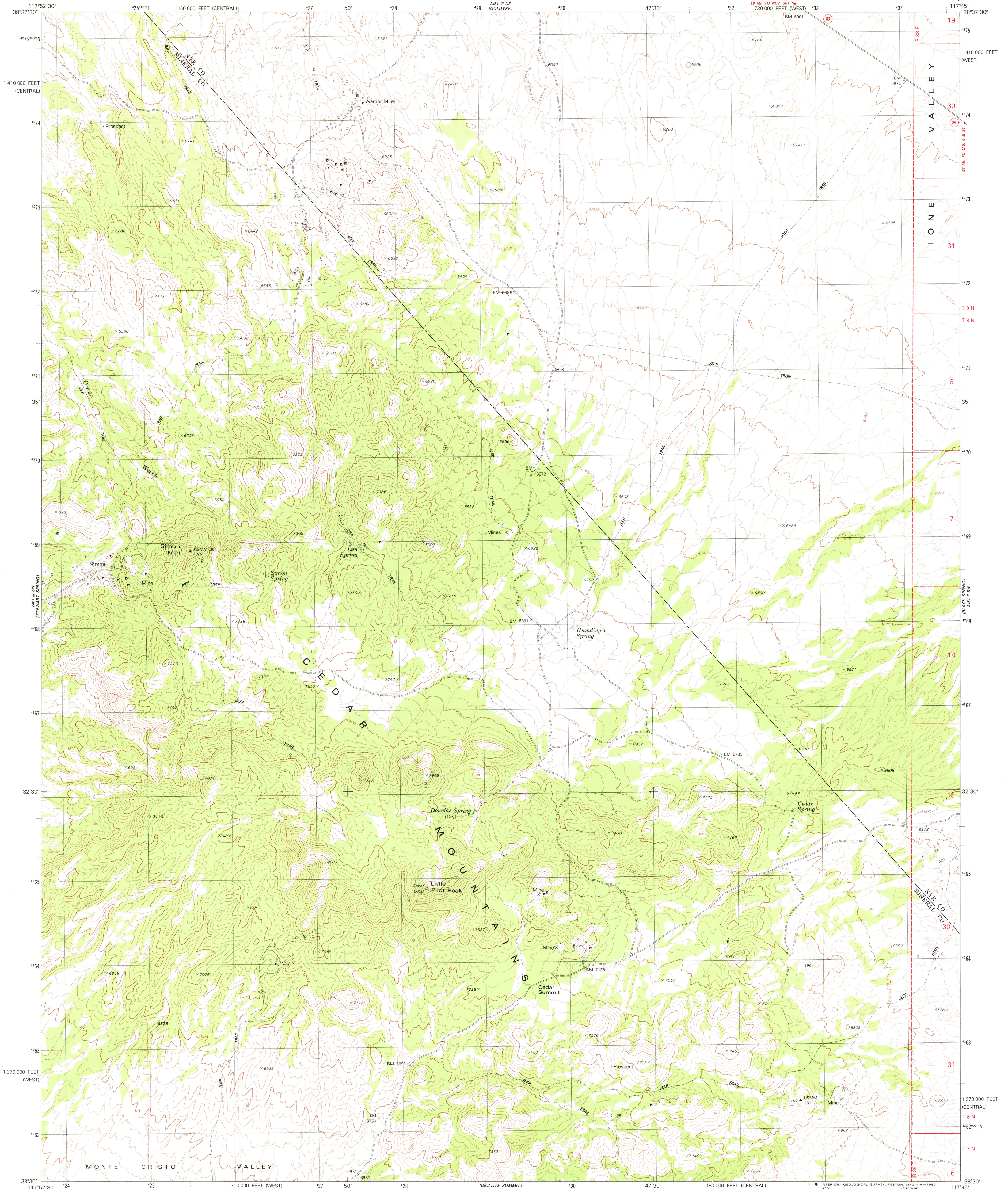
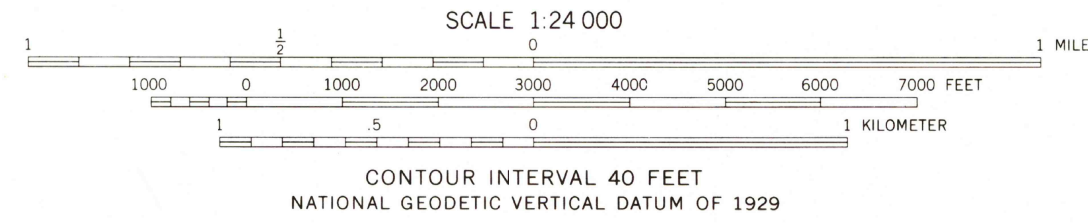
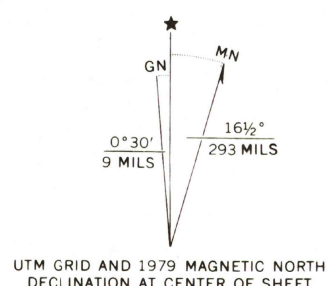


UNITED STATES
DEPARTMENT OF THE INTERIOR
GEOLOGICAL SURVEY

SIMON QUADRANGLE
NEVADA
7.5 MINUTE SERIES (TOPOGRAPHIC)



Mapped, edited, and published by the Geological Survey
Control by USGS and NOS/NOAA
Topography by photogrammetric methods from aerial photographs taken 1974. Field checked 1975
Map edited 1979
Projection: Nevada coordinate system, west zone (transverse Mercator)
10,000-foot grid ticks based on Nevada coordinate system, west and central zones
1000-meter Universal Transverse Mercator grid, zone 11 1927 North American Datum
To place on the predicted North American Datum 1983 move the projection lines 11 meters north and 82 meters east as shown by dashed corner ticks
Fine red dashed lines indicate selected fence and field lines where generally visible on aerial photographs. This information is unchecked



ROAD CLASSIFICATION

| | |
|---------------------------------|---|
| Primary highway, hard surface | Light duty road, hard or improved surface |
| Secondary highway, hard surface | Unimproved road |

○ Interstate Route ○ U. S. Route ○ State Route

THIS MAP COMPLIES WITH NATIONAL MAP ACCURACY STANDARDS
FOR SALE BY U. S. GEOLOGICAL SURVEY, DENVER, COLORADO 80225, OR RESTON, VIRGINIA 22092
A FOLDER DESCRIBING TOPOGRAPHIC MAPS AND SYMBOLS IS AVAILABLE ON REQUEST

USGS
Historical File
Topographic Division

SIMON, NEV.
N3830-W11745/7.5
1979

DMA 2461 III SE—SERIES V896

AUG 15 1980

1650