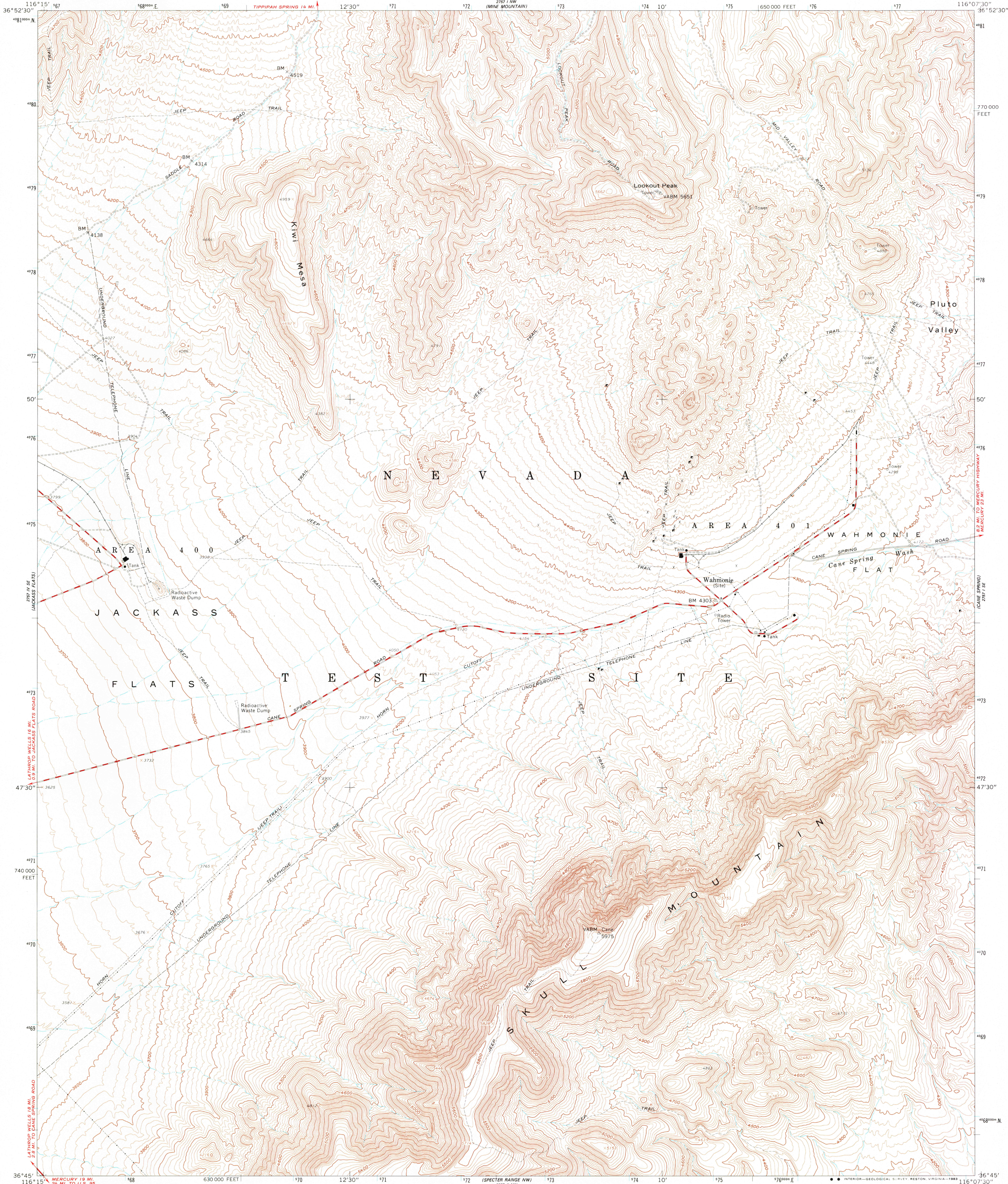
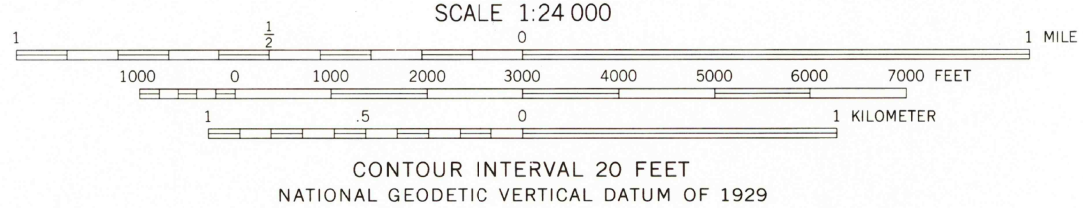
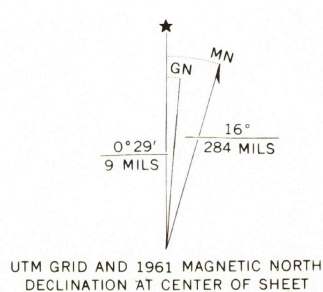


UNITED STATES
DEPARTMENT OF THE INTERIOR
GEOLOGICAL SURVEY

SKULL MOUNTAIN QUADRANGLE
NEVADA-NYE CO.
7.5 MINUTE SERIES (TOPOGRAPHIC)
SW 4 CANE SPRING 15' QUADRANGLE



Mapped, edited, and published by the Geological Survey
in cooperation with the Atomic Energy Commission
Control by USGS, USC&GS, and Atomic Energy Commission
Topography from aerial photographs by photogrammetric methods
Aerial photographs taken 1959. Field check 1961
Polyconic projection. 1927 North American datum
10,000-foot grid based on Nevada coordinate system, central zone
1000-meter Universal Transverse Mercator grid ticks,
zone 11, shown in blue
To place on the predicted North American Datum 1983,
move the projection lines 8 meters north and
78 meters east as shown by dashed corner ticks
There may be private inholdings within the boundaries of
the National or State reservations shown on this map



THIS MAP COMPLIES WITH NATIONAL MAP ACCURACY STANDARDS
FOR SALE BY U. S. GEOLOGICAL SURVEY, DENVER, COLORADO 80225, OR RESTON, VIRGINIA 22092
A FOLDER DESCRIBING TOPOGRAPHIC MAPS AND SYMBOLS IS AVAILABLE ON REQUEST



ROAD CLASSIFICATION
Heavy duty ——— Light duty ———
Medium duty ——— Unimproved dirt ———

SKULL MOUNTAIN, NEV.
SW 4 CANE SPRING 15' QUADRANGLE
N3645-W11607 5/7 5

1961
DMA 2757 I SW-SERIES V896

NOV 15 1983

RETURN TO:
USGS AND HISTORICAL MAP ARCHIVES