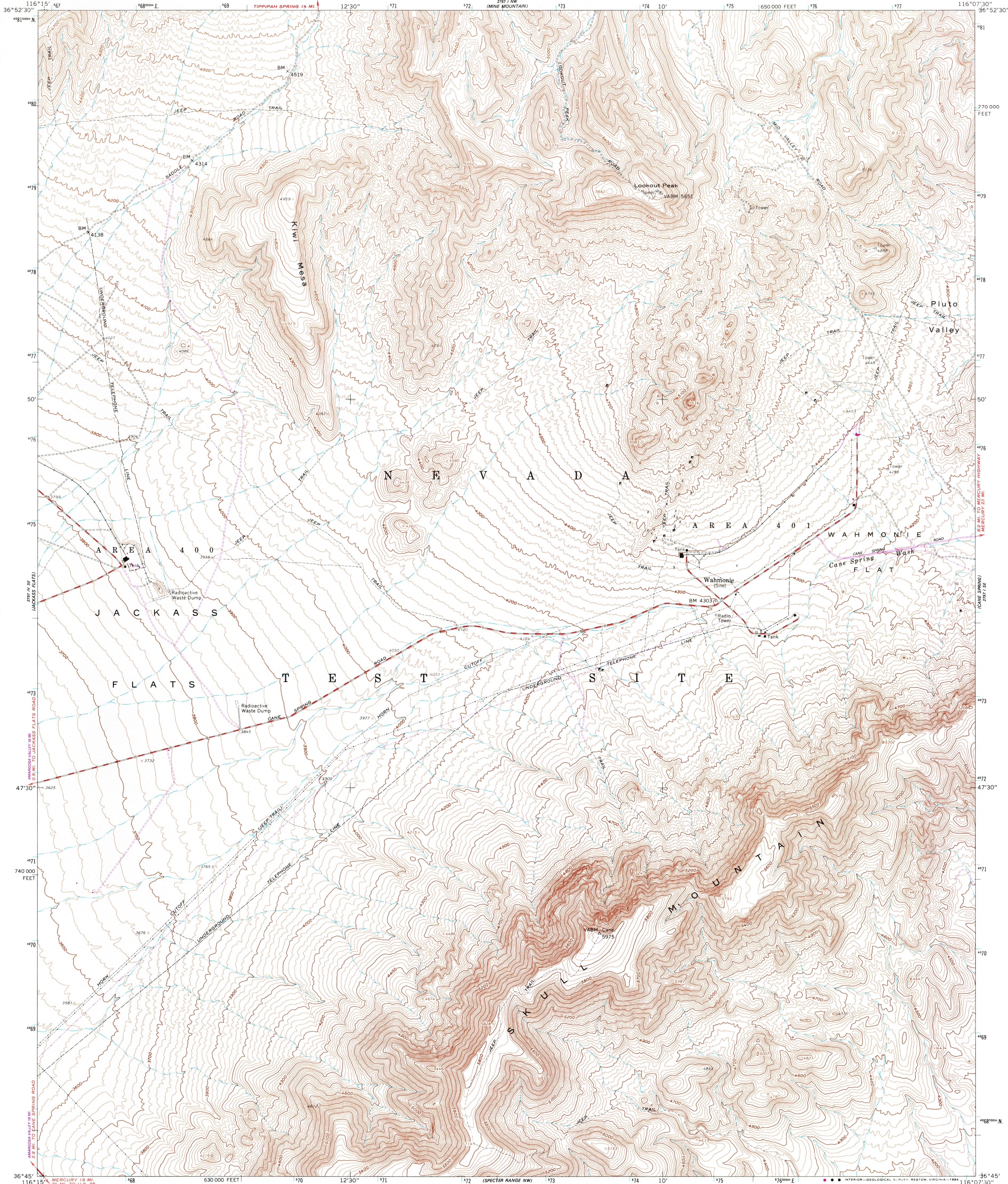
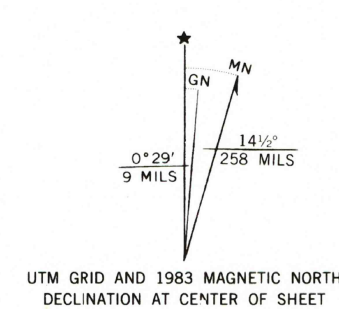


UNITED STATES
DEPARTMENT OF THE INTERIOR
GEOLOGICAL SURVEY

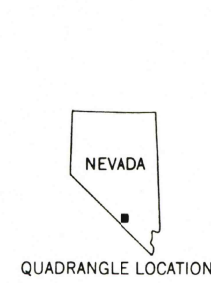
SKULL MOUNTAIN QUADRANGLE
NEVADA-NYE CO.
7.5 MINUTE SERIES (TOPOGRAPHIC)
SW 4 CANE SPRING 15' QUADRANGLE



Mapped, edited, and published by the Geological Survey
in cooperation with the Atomic Energy Commission
Control by USGS, NOS/NOAA, and Atomic Energy Commission
Topography by photogrammetric methods from aerial
photographs taken 1959. Field checked 1961
Polyconic projection. 10,000-foot grid ticks based on Nevada
coordinate system, central zone
1000-meter Universal Transverse Mercator grid ticks, zone 11, shown in blue
1927 North American Datum
To place on the predicted North American Datum 1983
move the projection lines 8 meters north and
78 meters east as shown by dashed corner ticks
There may be private inholdings within the boundaries of the
National or State reservations shown on this map
Revisions shown in purple and woodland compiled from aerial
photographs taken 1980 and other sources. This information
not field checked. Map edited 1983



SCALE 1:24,000
CONTOUR INTERVAL 20 FEET
NATIONAL GEODETIC VERTICAL DATUM OF 1929
THIS MAP COMPLIES WITH NATIONAL MAP ACCURACY STANDARDS
FOR SALE BY U. S. GEOLOGICAL SURVEY, DENVER, COLORADO 80225, OR RESTON, VIRGINIA 22092
A FOLDER DESCRIBING TOPOGRAPHIC MAPS AND SYMBOLS IS AVAILABLE ON REQUEST



ROAD CLASSIFICATION
Heavy-duty ——— Light-duty ———
Medium-duty ——— Unimproved dirt ———
SKULL MOUNTAIN, NEV.
SW 4 CANE SPRING 15' QUADRANGLE
36116-G2-TF-024
1961
PHOTOREVISED 1983
DMA 2757 1 SW—SERIES Y896

1961
PHOTOREVISED 1983
DMA 2757 1 SW—SERIES Y896
1961
PHOTOREVISED 1983
DMA 2757 1 SW—SERIES Y896