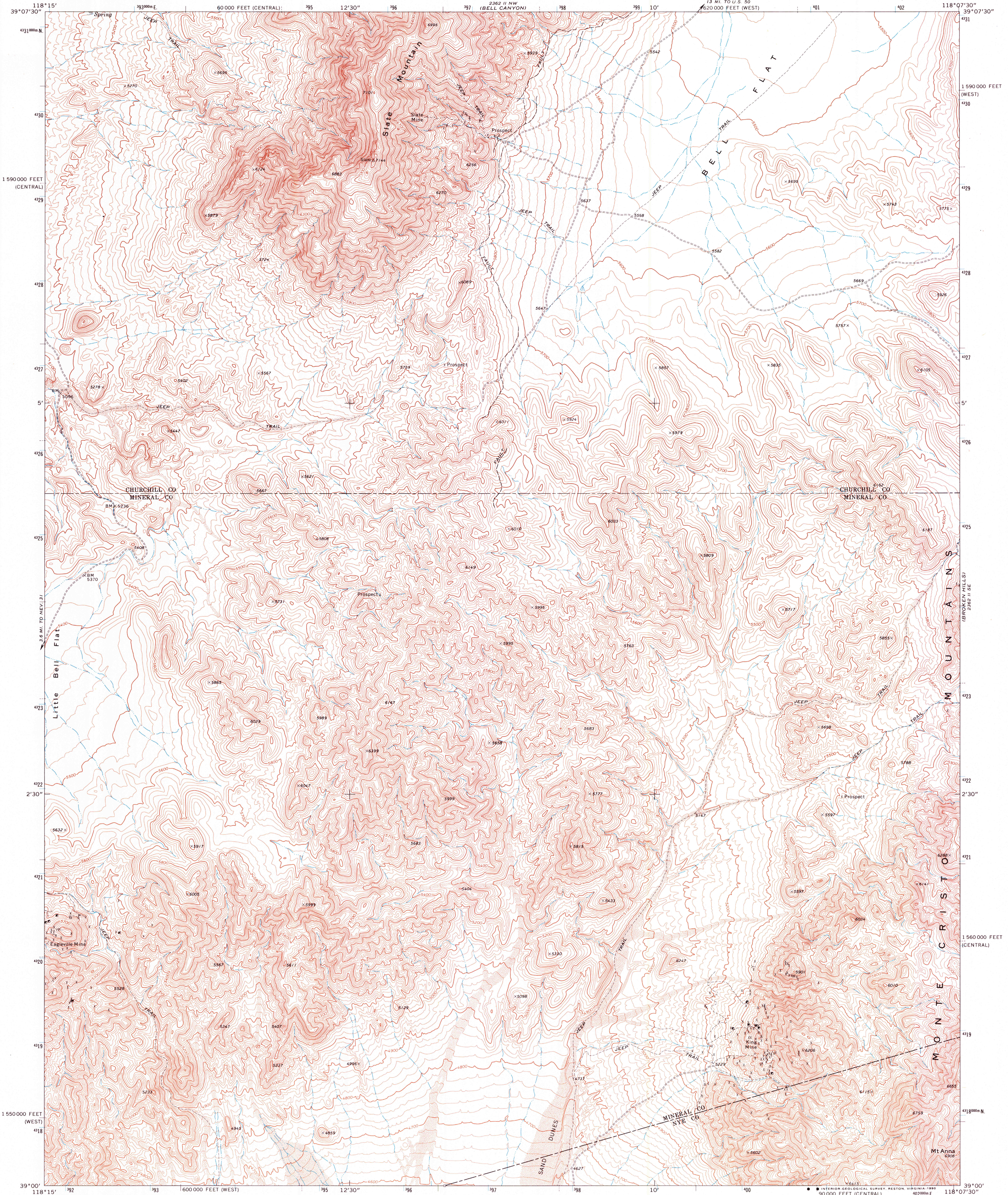
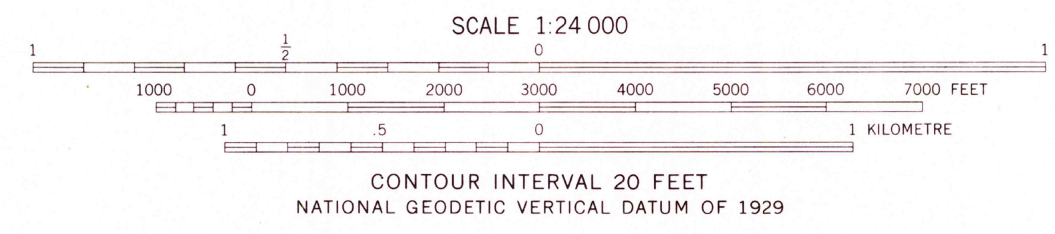
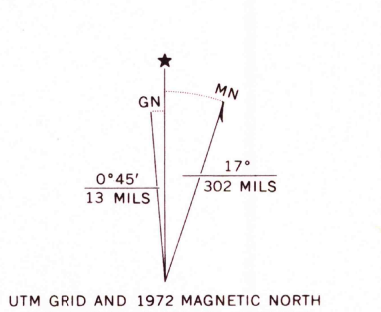


2292 (NE  
BELL MOUNTAIN)



Mapped, edited, and published by the Geological Survey  
Control by USGS and NOS/NOAA  
Topography by photogrammetric methods from aerial  
photographs taken 1971. Field checked 1972  
Projection: Nevada coordinate system, west zone  
(transverse Mercator)  
10,000-foot grids based on Nevada coordinate system,  
west and central zones  
1000-metre Universal Transverse Mercator grid ticks,  
zone 11, shown in blue. 1927 North American datum  
Land lines have not been established in this area  
Map photoinspected 1980  
No major culture or drainage changes observed



SCALE 1:24 000  
CONTOUR INTERVAL 20 FEET  
NATIONAL GEODETIC VERTICAL DATUM OF 1929



QUADRANGLE LOCATION

ROAD CLASSIFICATION  
Unimproved road, fair or dry weather

THIS MAP COMPLIES WITH NATIONAL MAP ACCURACY STANDARDS  
FOR SALE BY U.S. GEOLOGICAL SURVEY, DENVER, COLORADO 80225, OR RESTON, VIRGINIA 22092  
A FOLDER DESCRIBING TOPOGRAPHIC MAPS AND SYMBOLS IS AVAILABLE ON REQUEST

SLATE MTN, NEV.  
N3900-W11807.5/7.5  
1972  
PHOTOINSPECTED 1980  
AMS 2362 II SW-SERIES V896

