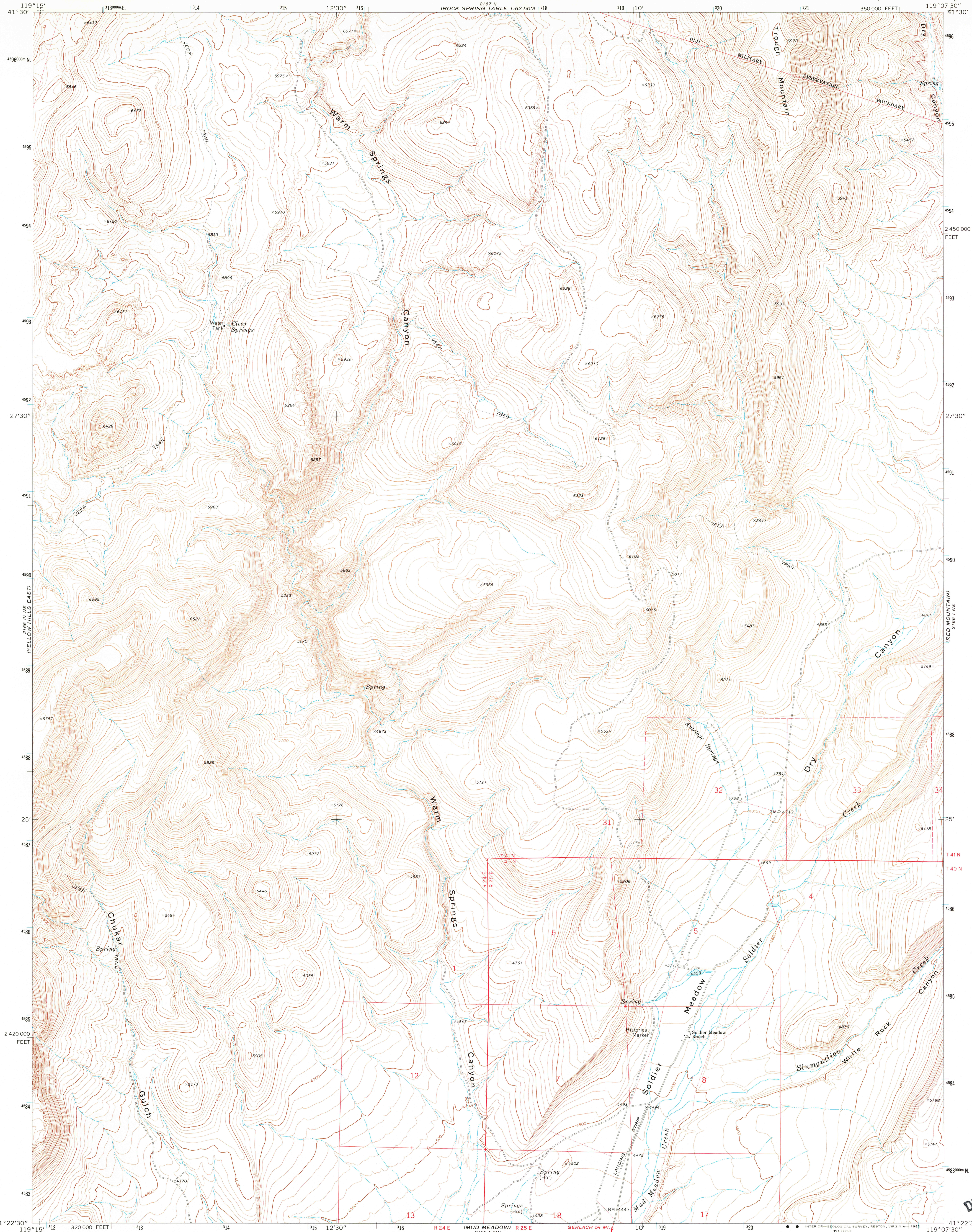


UNITED STATES
DEPARTMENT OF THE INTERIOR
GEOLOGICAL SURVEY

SOLDIER MEADOW QUADRANGLE
NEVADA—HUMBOLDT CO.
7.5 MINUTE SERIES (TOPOGRAPHIC)



Mapped, edited, and published by the Geological Survey
Control by USGS and NOS/NOAA

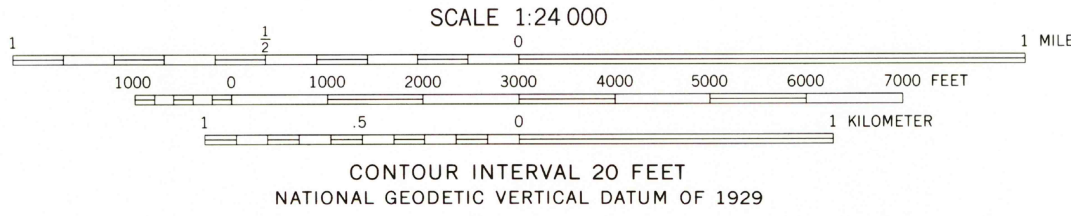
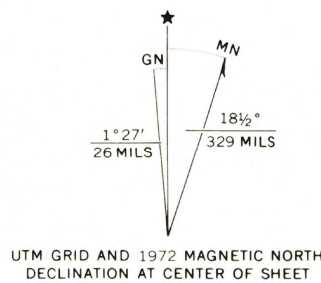
Topography by photogrammetric methods from aerial
photographs taken 1971. Field checked 1972

Projection and 10,000-foot grid ticks: Nevada coordinate
system, west zone (transverse Mercator)
1000-meter Universal Transverse Mercator grid ticks,
zone 11, shown in blue. 1927 North American datum

To place on the predicted North American Datum 1983
move the projection lines 16 meters north and
85 meters east as shown by dashed corner ticks

Fine red dashed lines indicate selected fence lines

Where omitted, land lines have not been established
or are not shown because of insufficient data



ROAD CLASSIFICATION	
Primary highway, hard surface	Light-duty road, hard or improved surface
Secondary highway, hard surface	Unimproved road
Interstate Route	U. S. Route
	State Route

SOLDIER MEADOW, NEV.
N4122.5—W11907.5/7.5

1972

DMA 2166 I NW—SERIES V896

THIS MAP COMPLIES WITH NATIONAL MAP ACCURACY STANDARDS
FOR SALE BY U. S. GEOLOGICAL SURVEY, DENVER, COLORADO 80225, OR RESTON, VIRGINIA 22092
A FOLDER DESCRIBING TOPOGRAPHIC MAPS AND SYMBOLS IS AVAILABLE ON REQUEST

DEC 03 1982

RETURN TO:
USGS MAP HISTORICAL MAP ARCHIVES

1950