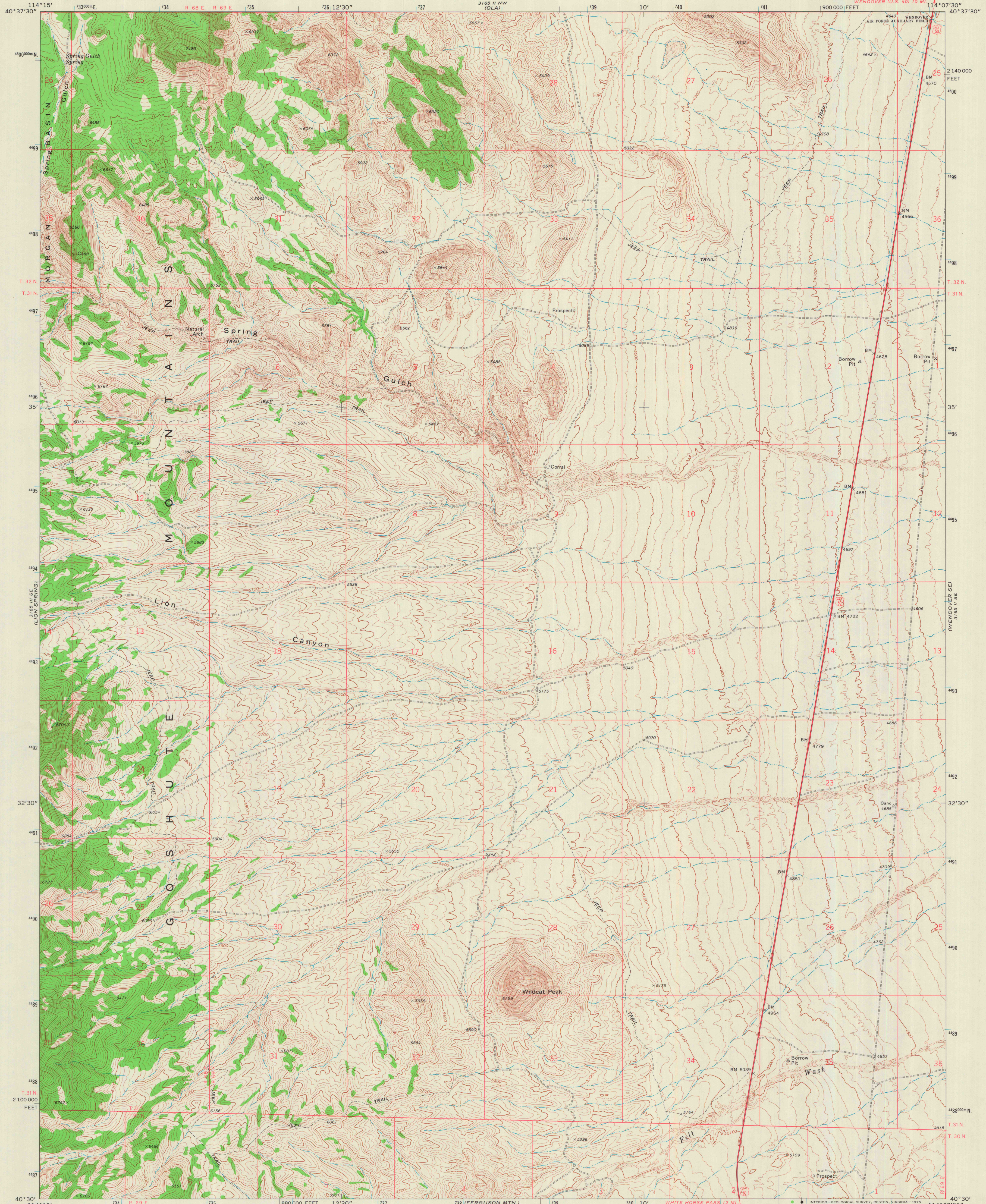
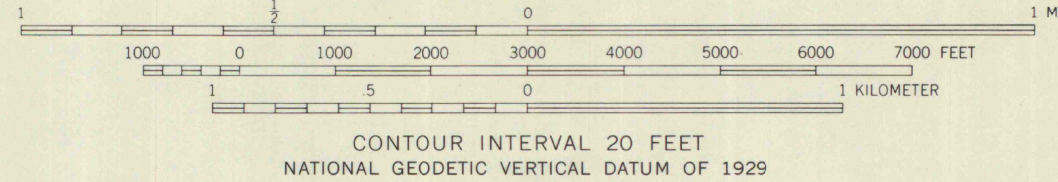
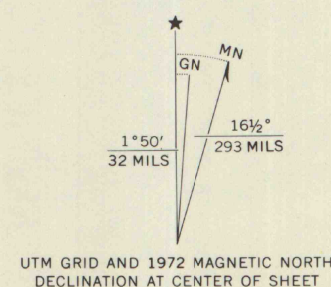


UNITED STATES
DEPARTMENT OF THE INTERIOR
GEOLOGICAL SURVEY

SPRING GULCH QUADRANGLE
NEVADA-ELKO CO.
7.5 MINUTE SERIES (TOPOGRAPHIC)



Mapped, edited, and published by the Geological Survey
Control by USGS and NOS/NOAA
Topography by photogrammetric methods from aerial
photographs taken 1970. Field checked 1972
Projection and 10,000-foot grid ticks: Nevada coordinate
system, east zone (transverse Mercator)
1000-meter Universal Transverse Mercator grid ticks,
zone 11, shown in blue. 1927 North American datum
Where omitted, land lines have not been established



ROAD CLASSIFICATION	
Primary highway, hard surface	Light-duty road, hard or improved surface
Secondary highway, hard surface	Unimproved road
Interstate Route	U. S. Route
	State Route

THIS MAP COMPLIES WITH NATIONAL MAP ACCURACY STANDARDS
FOR SALE BY U. S. GEOLOGICAL SURVEY, DENVER, COLORADO 80225, OR RESTON, VIRGINIA 22092
A FOLDER DESCRIBING TOPOGRAPHIC MAPS AND SYMBOLS IS AVAILABLE ON REQUEST

SPRING GULCH, NEV.
N4030-W11407.5/7.5
1972

MAP AND AIR PHOTO
LIBRARY
APR 28 1975