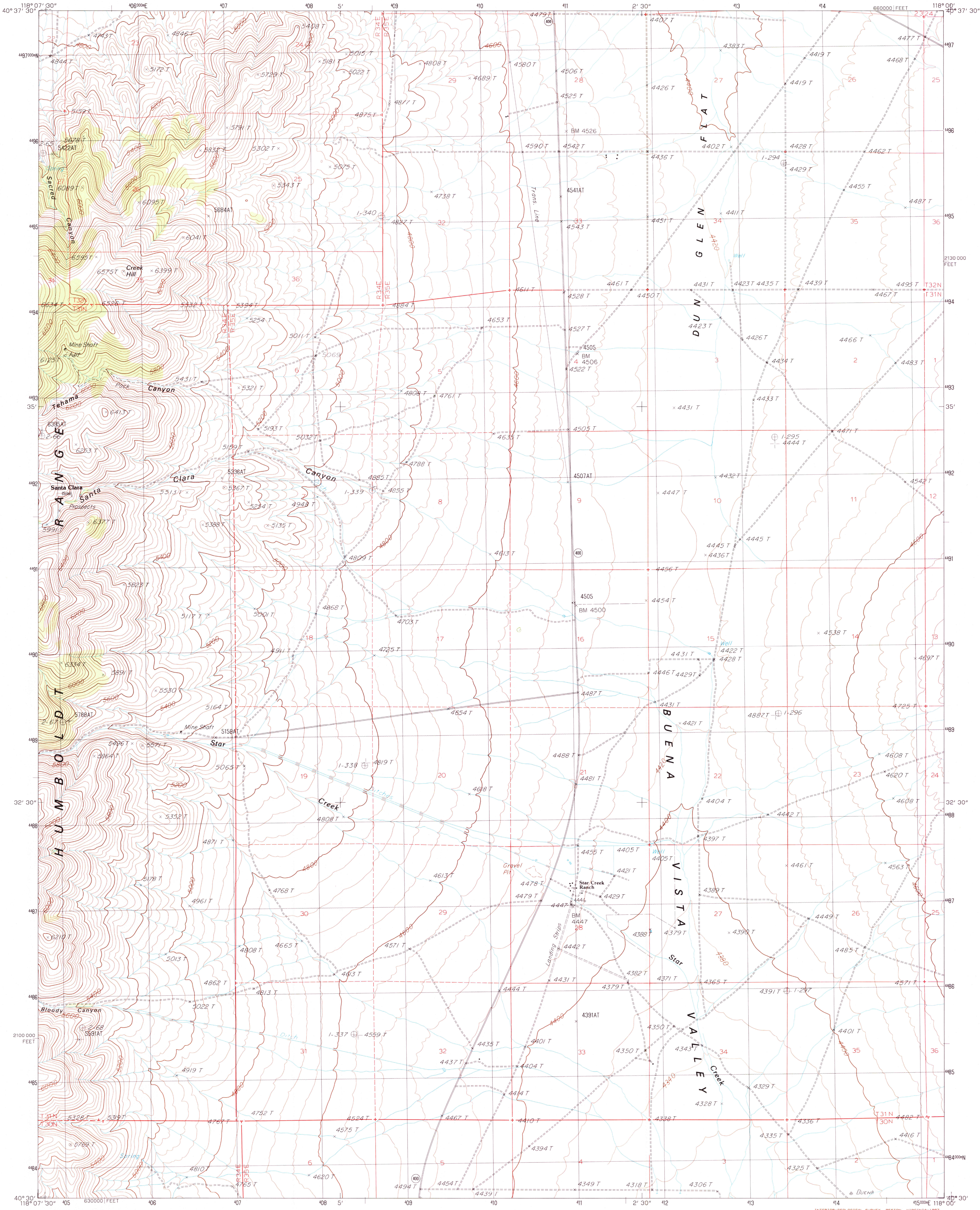


UNITED STATES  
DEPARTMENT OF THE INTERIOR  
GEOLOGICAL SURVEY

STAR CREEK RANCH QUADRANGLE  
NEVADA - PERSHING CO.  
7.5 MINUTE SERIES (TOPOGRAPHIC)



PRODUCED BY THE UNITED STATES GEOLOGICAL SURVEY  
CONTROL BY U.S.G.S. NOS/NOAA  
COMPILED FROM AERIAL PHOTOGRAPHS TAKEN IN 1962  
FIELD CHECKED IN 1983 MAP EDITED IN 1987  
PROJECTION TRANSVERSE MERCATOR  
GRID 1000-METER UNIVERSAL TRANSVERSE MERCATOR ZONE 12  
1000000-FOOT STATE GRID TICS NEVADA WEST ZONE  
UTM GRID DECLINATION 0°41' WEST  
1987 MAGNETIC NORTH DECLINATION 16° EAST  
VERTICAL DATUM NATIONAL GEODETIC VERTICAL DATUM OF 1929  
HORIZONTAL DATUM 1927 NORTH AMERICAN DATUM  
To place on the predicted North American Datum of 1983,  
move the projection lines as shown by dashed corner ticks  
(14 meters north and 82 meters east).  
There may be private inholdings within the boundaries of any  
Federal and State Reservations shown on this map.  
Certain land lines are omitted because of insufficient data.  
No distinction made between houses, barns, and other buildings.  
All marginal data and lettering generated and positioned by  
automated type placement procedures.

PROVISIONAL MAP  
Produced from original  
manuscript drawings. Infor-  
mation shown as of date of  
photography.

SCALE 1:24 000  
1 000 0 1000 2000 3000 4000 5000 6000 7000 8000 9000 10 000  
FEET  
1 000 0 1000 2000 3000 4000 5000 6000 7000 8000 9000 10 000  
METERS  
CONTOUR INTERVAL 40 FEET  
SUPPLEMENTARY CONTOUR INTERVAL 20 FEET

1	2	3	1 Inlay
4	5	6	2 Mill Crt
7	8	9	3 Dun Gln
			4 Star Peak
			5 Indio Canyon
			6 Congren Canyon
			7 Unioville
			8 Kile Hot Springs

ADJOINING 7.5' QUADRANGLE NAMES

ROAD LEGEND  
Improved Road  
Unimproved Road  
Trail  
Interstate Route  
U.S. Route  
State Route

STAR CREEK RANCH, NEVADA  
PROVISIONAL EDITION 1987

40118-EI-TF-024