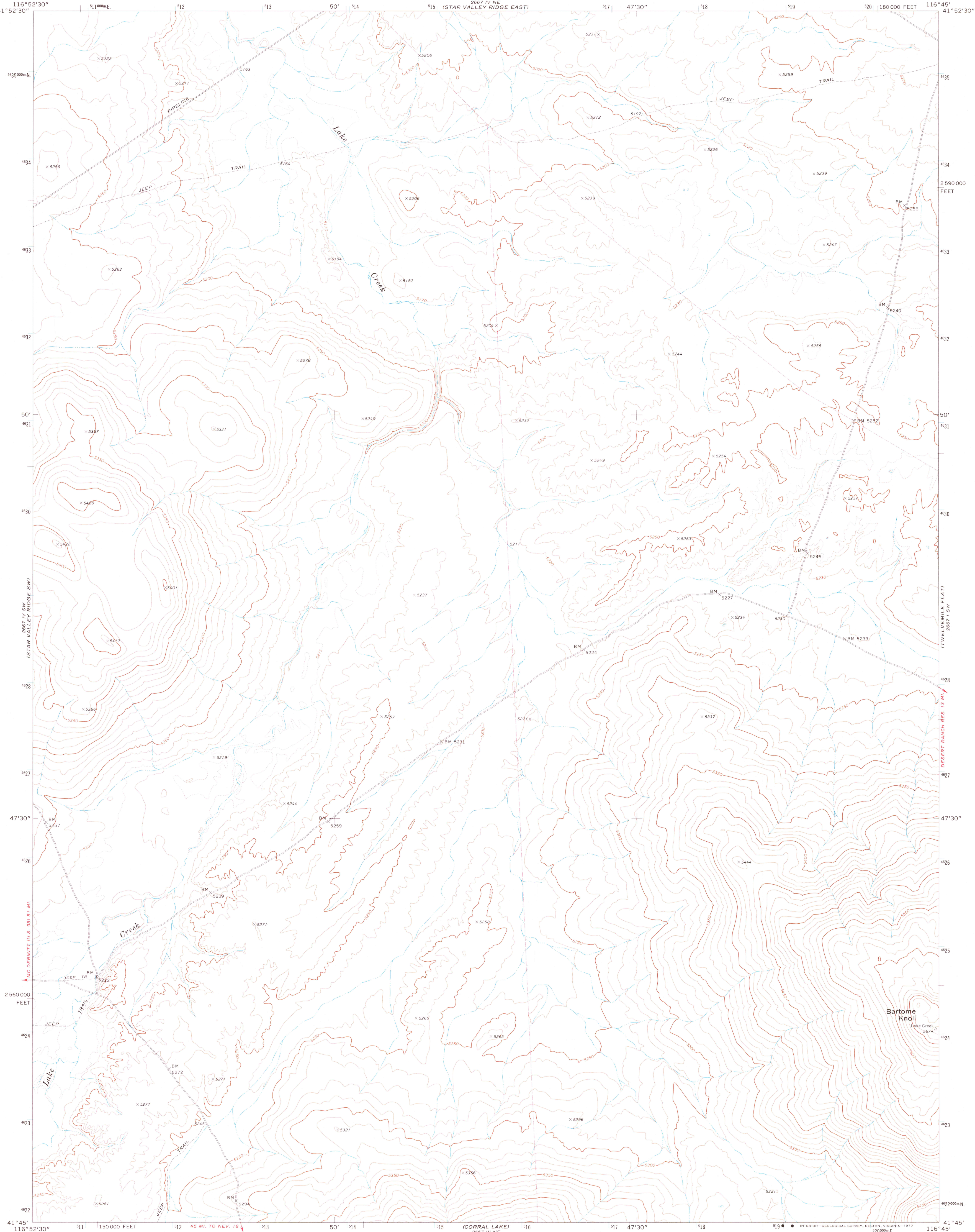
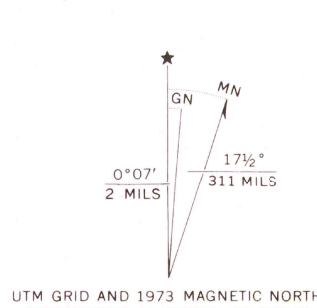


UNITED STATES
DEPARTMENT OF THE INTERIOR
GEOLOGICAL SURVEY

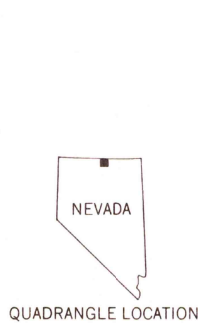
STAR VALLEY RIDGE SE QUADRANGLE
NEVADA—ELKO CO.
7.5 MINUTE SERIES (TOPOGRAPHIC)



Mapped, edited, and published by the Geological Survey
Control by USGS and NOS/NOAA
Topography by photogrammetric methods from aerial
photographs taken 1972. Field checked 1973
Projection and 10,000-foot grid ticks: Nevada coordinate
system, east zone (transverse Mercator)
1000-metre Universal Transverse Mercator grid ticks,
zone 11, shown in blue. 1927 North American datum
Fine red dashed lines indicate selected fence and field lines
where generally visible on aerial photographs
This information is unchecked
Land lines are omitted because of insufficient data



SCALE 1:24 000
1 1000 0 1000 2000 3000 4000 5000 6000 7000 FEET
1 0.5 1 KILOMETRE
CONTOUR INTERVAL 10 FEET
DOTTED LINES REPRESENT 5-FOOT CONTOURS
NATIONAL GEODETIC VERTICAL DATUM OF 1929
THIS MAP COMPLIES WITH NATIONAL MAP ACCURACY STANDARDS
FOR SALE BY U. S. GEOLOGICAL SURVEY, DENVER, COLORADO 80225 OR RESTON, VIRGINIA 22092
A FOLDER DESCRIBING TOPOGRAPHIC MAPS AND SYMBOLS IS AVAILABLE ON REQUEST



ROAD CLASSIFICATION
Primary highway, hard surface
Secondary highway, hard surface
Light-duty road, hard or improved surface
Unimproved road
Interstate Route
U. S. Route
State Route

STAR VALLEY RIDGE SE, NEV.
N4145—W11645/7.5

USGS
Historical File
Topographic Division

1973
AMS 2667 IV SE—SERIES V896

JUN 10 1977
2700