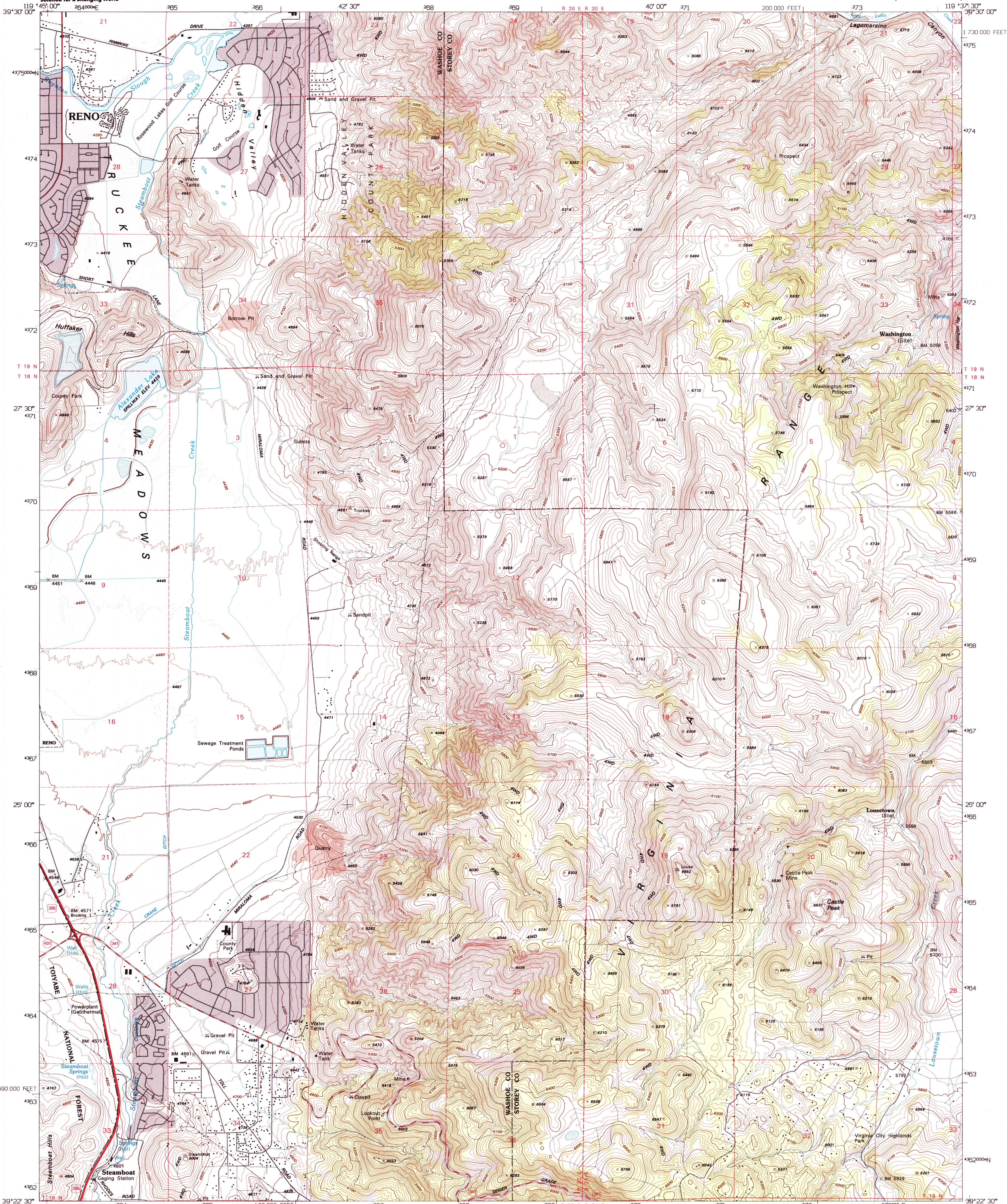


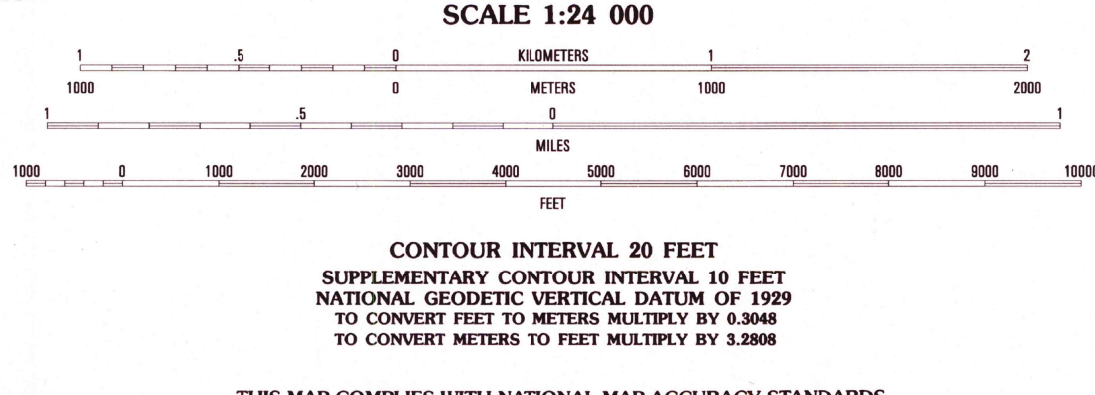
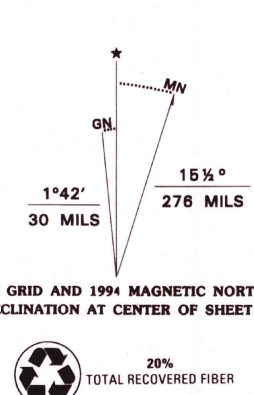


U.S. DEPARTMENT OF THE INTERIOR  
U.S. GEOLOGICAL SURVEY

STEAMBOAT QUADRANGLE  
NEVADA  
7.5 MINUTE SERIES (TOPOGRAPHIC)



Produced by the United States Geological Survey  
Control by USGS and NOS/NOAA  
Compiled from aerial photographs taken 1966. Field checked 1967  
Revised from aerial photographs taken 1992 and other sources  
Map edited 1994. Contours and land elevations have not been  
revised and may conflict with other content  
North American Datum of 1927 (NAD 27). Projection and  
blue 1000-meter ticks: Universal Transverse Mercator, zone 11  
10 000-foot ticks: Nevada Coordinate System, west zone  
North American Datum of 1983 (NAD 83) is shown by dashed  
corner ticks. The values of the shift between NAD 27 and NAD 83  
for 7.5-minute intersections are obtainable from National Geodetic  
Survey NADCON software  
There may be private inholdings within the boundaries of the  
National or State reservations shown on this map  
Fine red dashed lines indicate selected fence and field lines where  
generally visible on aerial photographs. This information is unchecked



NEVADA

QUADRANGLE LOCATION

1	2	3	1 Reno
2	3	4	2 Vicks
3	4	5	3 Patrick
4	5	6	4 Mount Rose NE
5	6	7	5 Clark Hills
6	7	8	6 Washoe City
7	8		7 Virginia City
8			8 Flowery Peak

RECEIVED  
JAN 31 2002  
HISTORICAL MAP ARCHIVES

STEAMBOAT, NV.  
39119-D6-TF-024  
1994

DMA 2062 1 NW-SERIES Y896

THIS MAP COMPLIES WITH NATIONAL MAP ACCURACY STANDARDS  
FOR SALE BY U.S. GEOLOGICAL SURVEY  
P.O. BOX 25286, DENVER, COLORADO 80225  
A FOLDER DESCRIBING TOPOGRAPHIC MAPS AND SYMBOLS IS AVAILABLE ON REQUEST