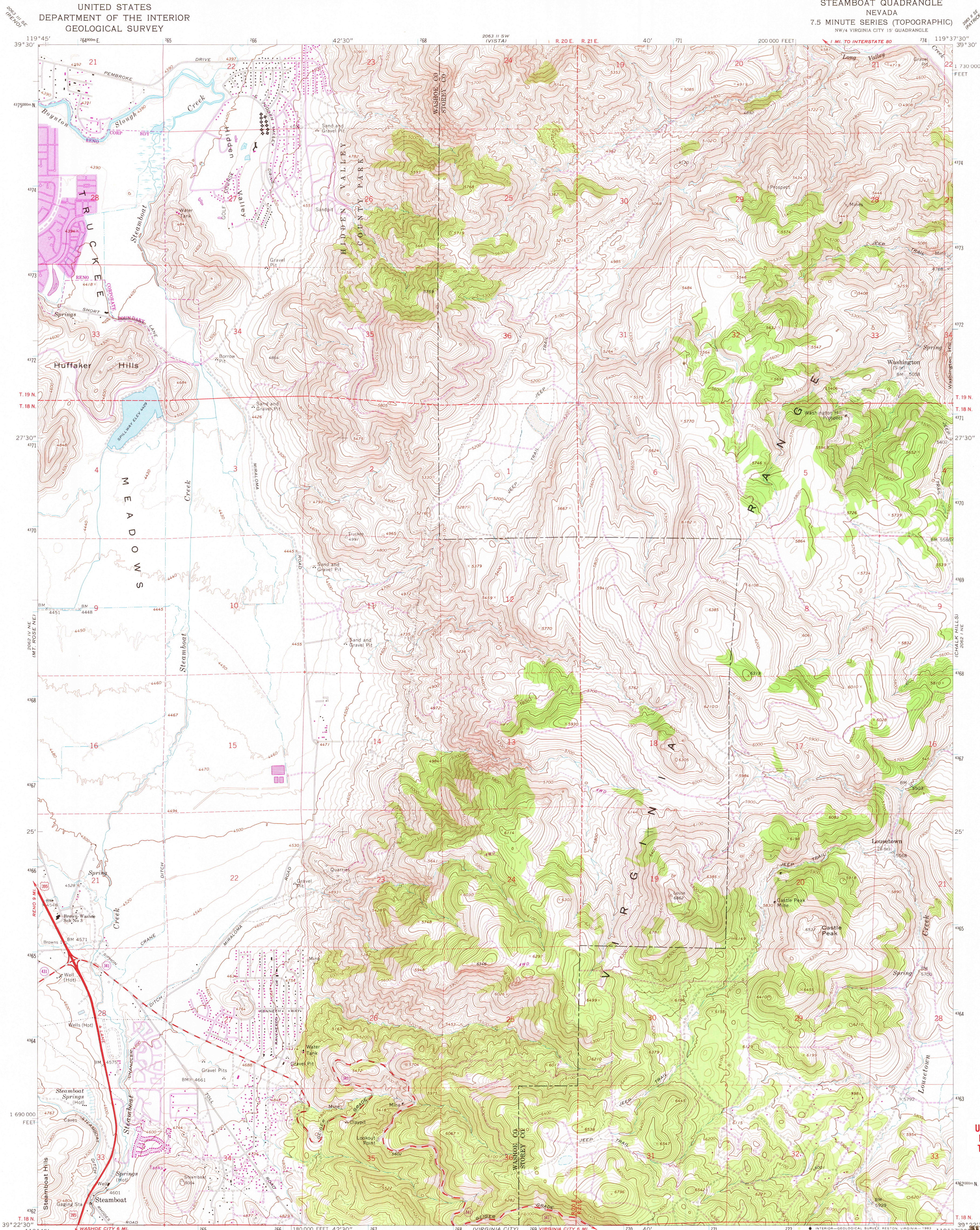


UNITED STATES
DEPARTMENT OF THE INTERIOR
GEOLOGICAL SURVEY

STEAMBOAT QUADRANGLE
NEVADA
7.5 MINUTE SERIES (TOPOGRAPHIC)
NW/4 VIRGINIA CITY 15' QUADRANGLE



USGS Library
Reston, VA
Topo Archive

AUG 25 1983

LOWERY PEAK

RETURN TO:
USGS AND HISTORICAL MAP ARCHIVES

Mapped, edited, and published by the Geological Survey

Control by USGS and NOS/NOAA

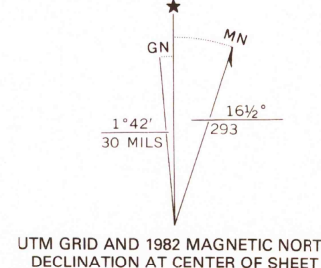
Topography by photogrammetric methods from aerial
photographs taken 1966. Field checked 1967

Polycyclic projection. 1927 North American datum
10,000-foot grid based on Nevada coordinate system, west zone
1000-meter Universal Transverse Mercator grid ticks,
zone 11, shown in blue

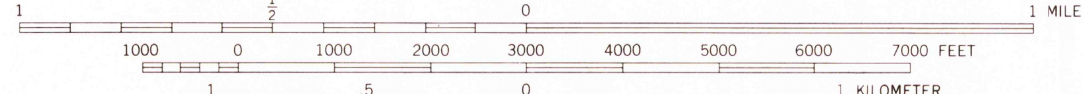
To place on the predicted North American Datum 1983
move the projection lines 14 meters north and
87 meters east as shown by dashed corner ticks

Fine red dashed lines indicate selected fence lines

There may be private inholdings within the boundaries of
the National or State reservations shown on this map



SCALE 1:24 000



CONTOUR INTERVAL 20 FEET
DOTTED LINES REPRESENT 10-FOOT CONTOURS
NATIONAL GEODETIC VERTICAL DATUM OF 1929

THIS MAP COMPLIES WITH NATIONAL MAP ACCURACY STANDARDS
FOR SALE BY U. S. GEOLOGICAL SURVEY, DENVER, COLORADO 80225, OR RESTON, VIRGINIA 22092
A FOLDER DESCRIBING TOPOGRAPHIC MAPS AND SYMBOLS IS AVAILABLE ON REQUEST

QUADRANGLE LOCATION

Revisions shown in purple compiled from aerial photographs
taken 1979 and other source data. This information not
field checked. Map edited 1982
Purple tint indicates extension of urban areas

ROAD CLASSIFICATION
Heavy-duty ——— Light-duty ———
Medium-duty ——— Unimproved dirt ———
U. S. Route ——— State Route ———

STEAMBOAT, NEV.
NW/4 VIRGINIA CITY 15' QUADRANGLE
N3922.5—W11937.5/7.5

1967
PHOTOREVISED 1982
DMA 2062 I NW—SERIES V896