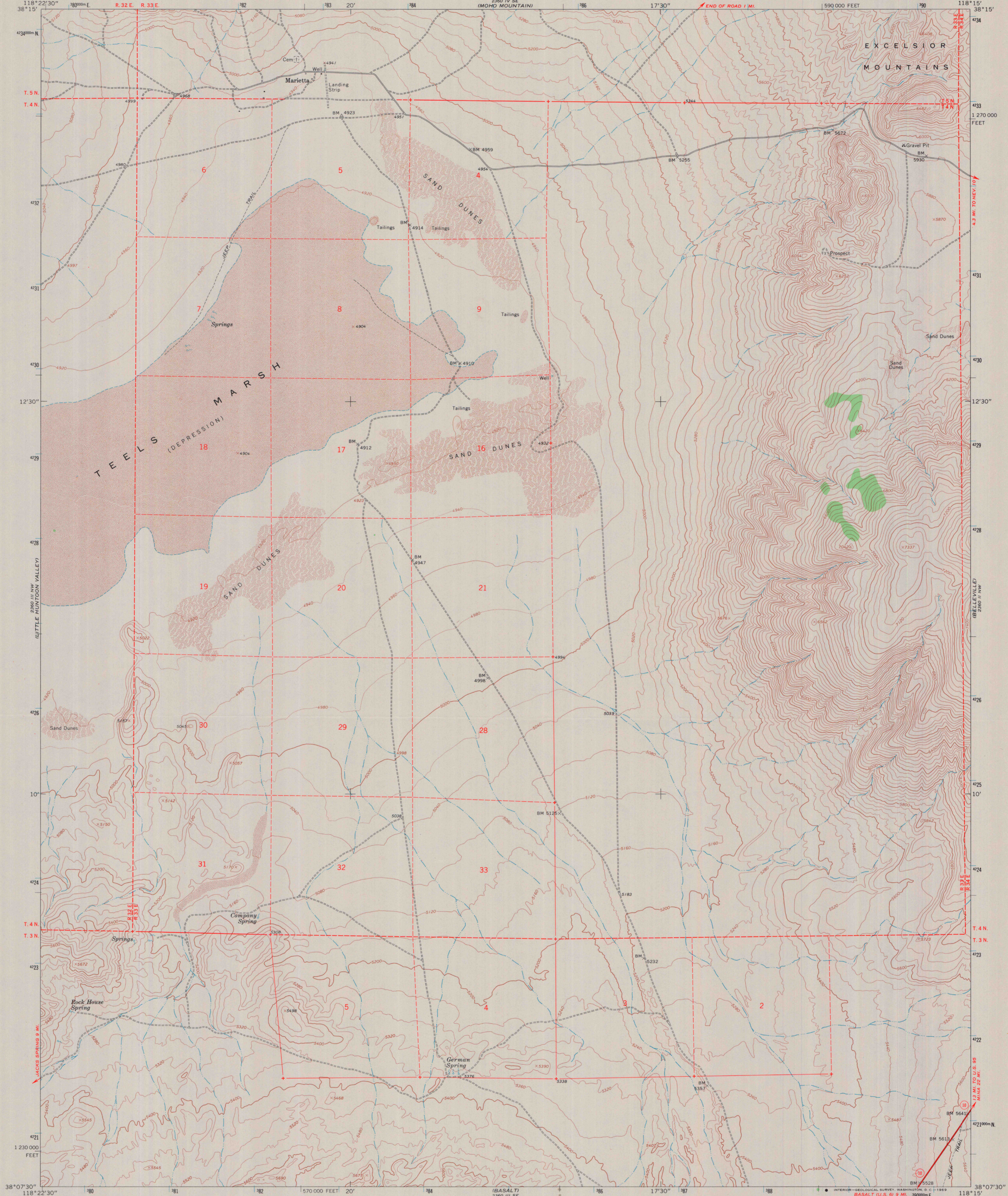
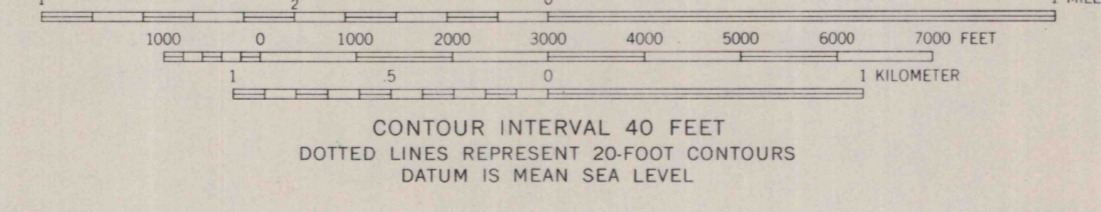
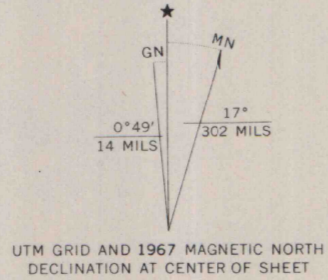


UNITED STATES  
DEPARTMENT OF THE INTERIOR  
GEOLOGICAL SURVEY

TEELS MARSH QUADRANGLE  
NEVADA—MINERAL CO.  
7.5 MINUTE SERIES (TOPOGRAPHIC)



Mapped, edited, and published by the Geological Survey  
Control by USGS and USC&GS  
Topography by photogrammetric methods from aerial  
photographs taken 1966. Field checked 1967  
Polyconic projection. 1927 North American datum  
10,000-foot grid based on Nevada coordinate system, west zone  
1000-meter Universal Transverse Mercator grid ticks,  
zone 11, shown in blue  
Where omitted, land lines have not been established  
or are not shown because of insufficient data



MAP AND AIR PHOTO LIBRARY  
FEB 3 1970  
University of Wisconsin

ROAD CLASSIFICATION  
Heavy duty ——— Light duty ———  
Unimproved dirt - - - - - State Route ○

THIS MAP COMPLIES WITH NATIONAL MAP ACCURACY STANDARDS  
FOR SALE BY U.S. GEOLOGICAL SURVEY, DENVER, COLORADO 80225, OR WASHINGTON, D.C. 20242  
A FOLDER DESCRIBING TOPOGRAPHIC MAPS AND SYMBOLS IS AVAILABLE ON REQUEST

TEELS MARSH, NEV.  
N3807.5—W11815/7.5  
1967  
AMS 2360 III NE—SERIES V896