

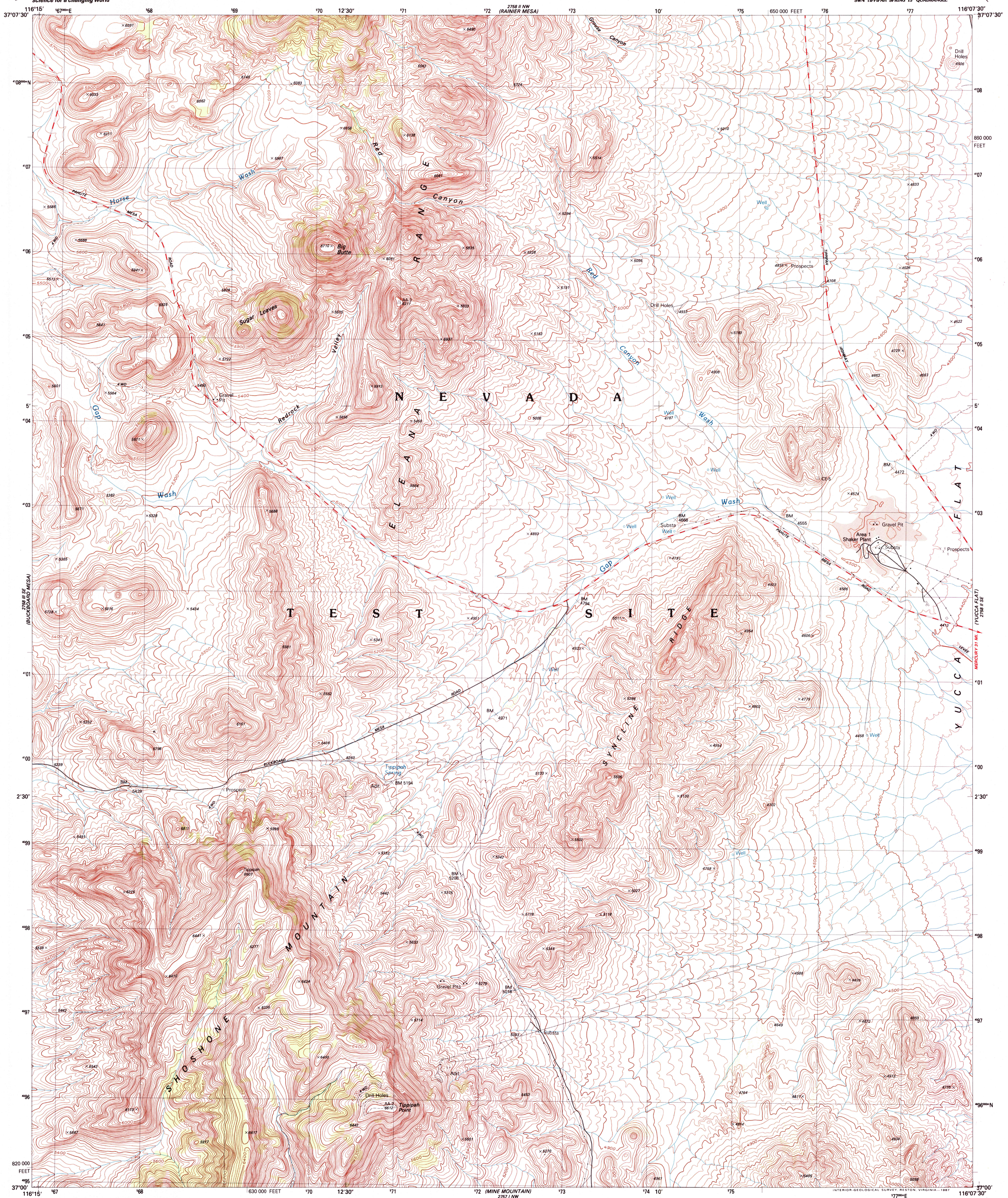
2758 II SW
10A SPRING



U.S. DEPARTMENT OF THE INTERIOR
U.S. GEOLOGICAL SURVEY

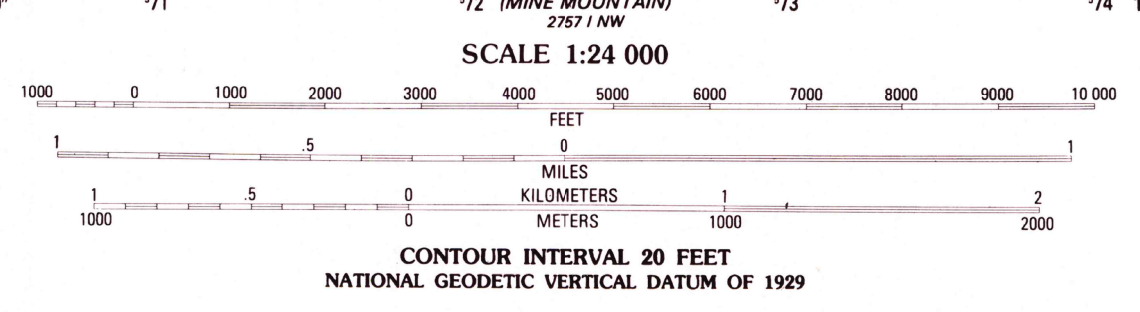
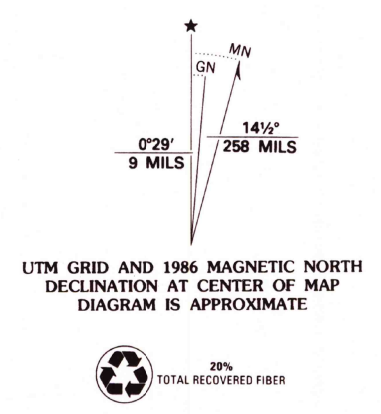
TIPPICAH SPRING QUADRANGLE
NEVADA-NYE CO.
7.5 MINUTE SERIES (TOPOGRAPHIC)
SW/4 TIPPICAH SPRING 15' QUADRANGLE

2758 II NW
10A SPRING



2758 II SW
10A SPRING

Produced by the United States Geological Survey
Control by USGS, NOS/NOAA, USCE and Department of Energy
Compiled by photogrammetric methods from aerial photographs
taken 1983. Field checked 1984. Map edited 1986
Projection and 10,000-foot grid ticks: Nevada coordinate
system, central zone (transverse Mercator)
1000-meter Universal Transverse Mercator grid, zone 11
1927 North American Datum
To place on the predicted North American Datum 1983
move the projection lines 9 meters north and
78 meters east as shown by dashed corner ticks
Land lines have not been established in this area
There may be private inholdings within the boundaries of
the National or State reservations shown on this map



ROAD CLASSIFICATION

Primary highway, hard surface	Light-duty road, hard or improved surface
Secondary highway, hard surface	Unimproved road
Interstate Route	U. S. Route
	State Route

RECEIVED
AUG 31 1999
USGS NMD
HISTORICAL MAP ARCHIVES
TIPPICAH SPRING, NEV.
SW/4 TIPPICAH SPRING 15' QUADRANGLE
37116-A2-TF-024
1986
DMA 2758 II SW-SERIES V896

THIS MAP COMPLIES WITH NATIONAL MAP ACCURACY STANDARDS
FOR SALE BY U.S. GEOLOGICAL SURVEY, P.O. BOX 25286, DENVER, COLORADO 80225
A FOLDER DESCRIBING TOPOGRAPHIC MAPS AND SYMBOLS IS AVAILABLE ON REQUEST

2758 II NW
10A SPRING

