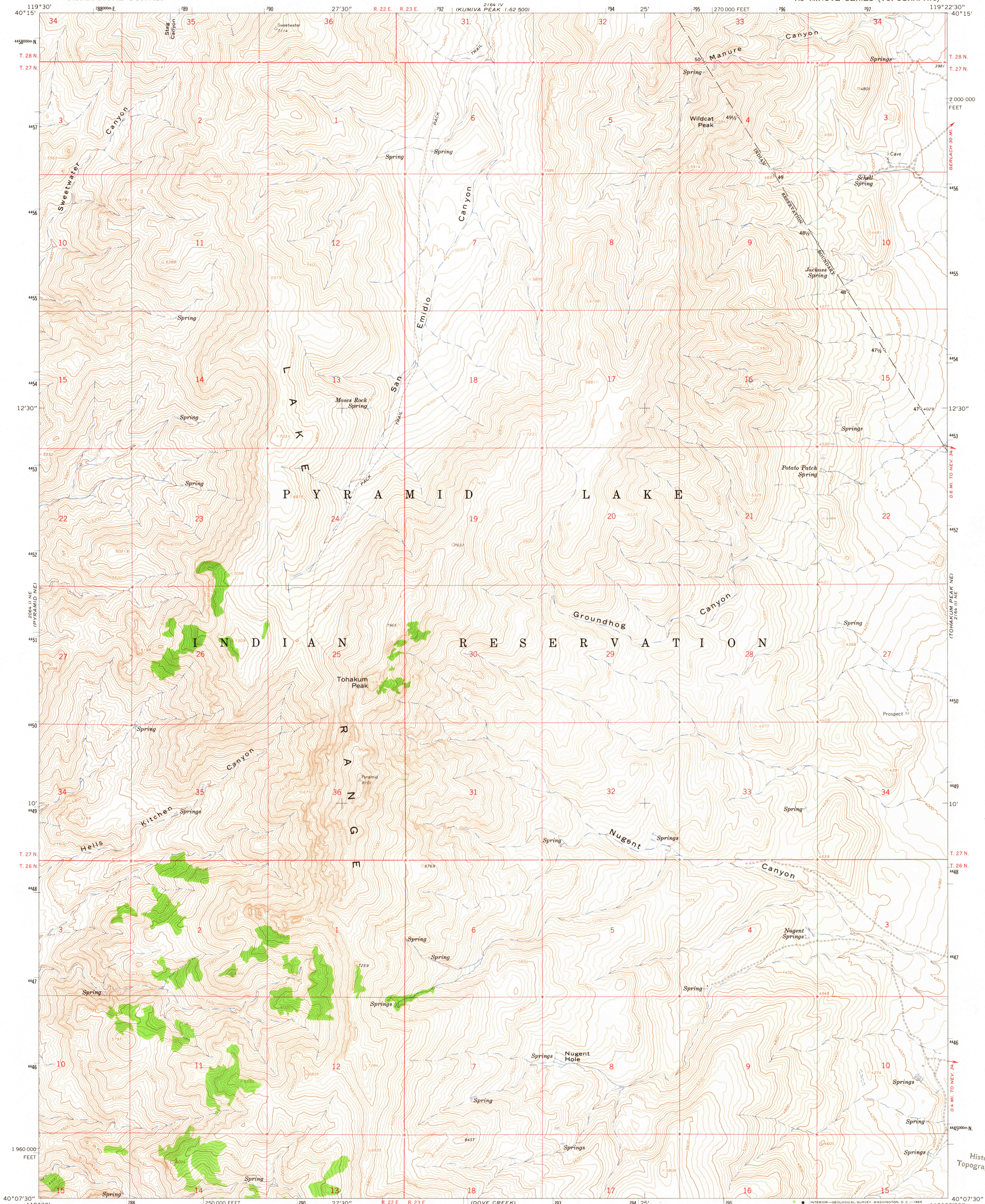
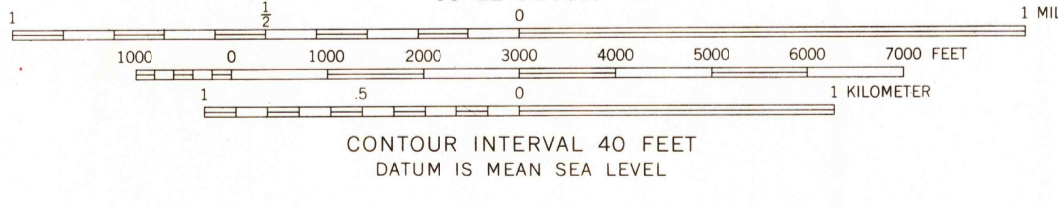
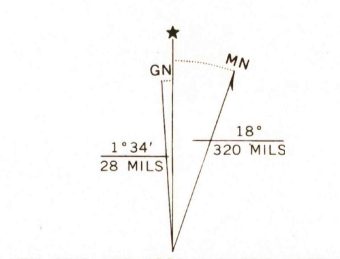


2164 IV  
KUMIVA PEAK  
1:62,500



Mapped, edited, and published by the Geological Survey  
Control by USGS and USC&GS  
Topography by photogrammetric methods from aerial  
photographs taken 1962. Field checked 1964  
Polyconic projection. 1927 North American datum  
10,000-foot grid based on Nevada coordinate system, west zone  
1000-meter Universal Transverse Mercator grid ticks,  
zone 11, shown in blue  
Fine red dashed lines indicate selected fence lines



ROAD CLASSIFICATION  
Unimproved dirt -----

THIS MAP COMPLIES WITH NATIONAL MAP ACCURACY STANDARDS  
FOR SALE BY U.S. GEOLOGICAL SURVEY, DENVER, COLORADO 80225, OR WASHINGTON, D. C. 20242  
A FOLDER DESCRIBING TOPOGRAPHIC MAPS AND SYMBOLS IS AVAILABLE ON REQUEST

U.S.G.S.  
FILE COPY  
TOPOGRAPHIC DIVISION

TOHAKUM PEAK NW, NEV.  
N4007.5—W11922.5/7.5  
1964  
AMS 2164 III NW—SERIES V896

NOV 2 1965

2200