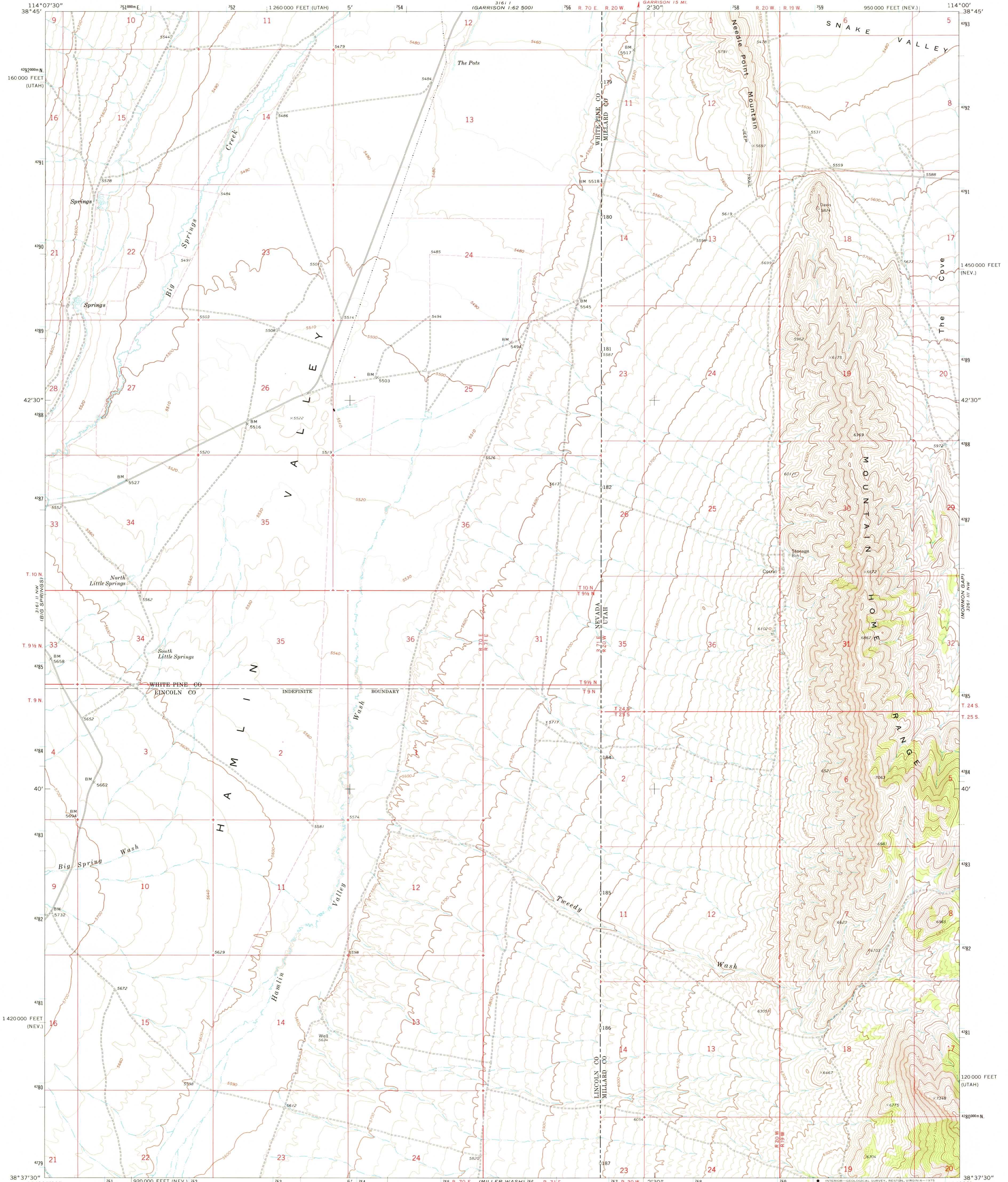
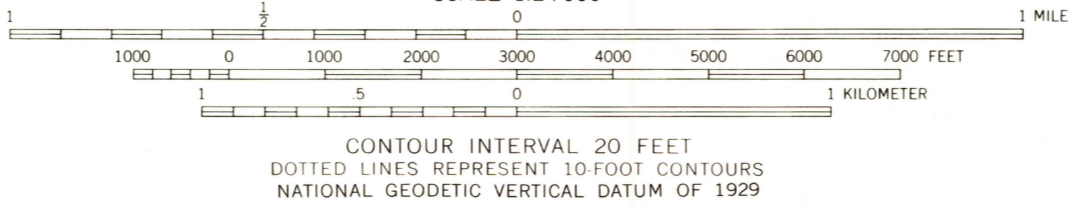
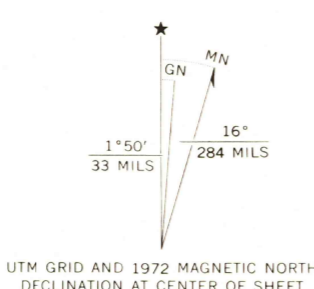


UNITED STATES
DEPARTMENT OF THE INTERIOR
GEOLOGICAL SURVEY

TWEEDY WASH QUADRANGLE
NEVADA-UTAH
7.5 MINUTE SERIES (TOPOGRAPHIC)



Mapped, edited, and published by the Geological Survey
Control by USGS and NOS/NOAA
Topography by photogrammetric methods from aerial photographs taken 1970. Field checked 1972
Projection: Nevada coordinate system, east zone (transverse Mercator)
10,000-foot grid ticks based on Nevada coordinate system, east zone, and Utah coordinate system, central zone
1000-meter Universal Transverse Mercator grid ticks, zone 11, shown in blue. 1927 North American datum
Fine red dashed lines indicate selected fence lines
Where omitted, land lines have not been established



ROAD CLASSIFICATION

Primary highway, hard surface	Light-duty road, hard or improved surface
Secondary highway, hard surface	Unimproved road
Interstate Route	U. S. Route
	Slate Route

THIS MAP COMPLIES WITH NATIONAL MAP ACCURACY STANDARDS
FOR SALE BY U. S. GEOLOGICAL SURVEY, DENVER, COLORADO 80225, OR RESTON, VIRGINIA 22092
A FOLDER DESCRIBING TOPOGRAPHIC MAPS AND SYMBOLS IS AVAILABLE ON REQUEST

USGS
Historical File
Topographic Division

TWEEDY WASH, NEV.—UTAH
N3837.5—W11400.7.5
1972
AMS 3161 II NE—SERIES V896

MAR 3 1975
MAR 3 1975