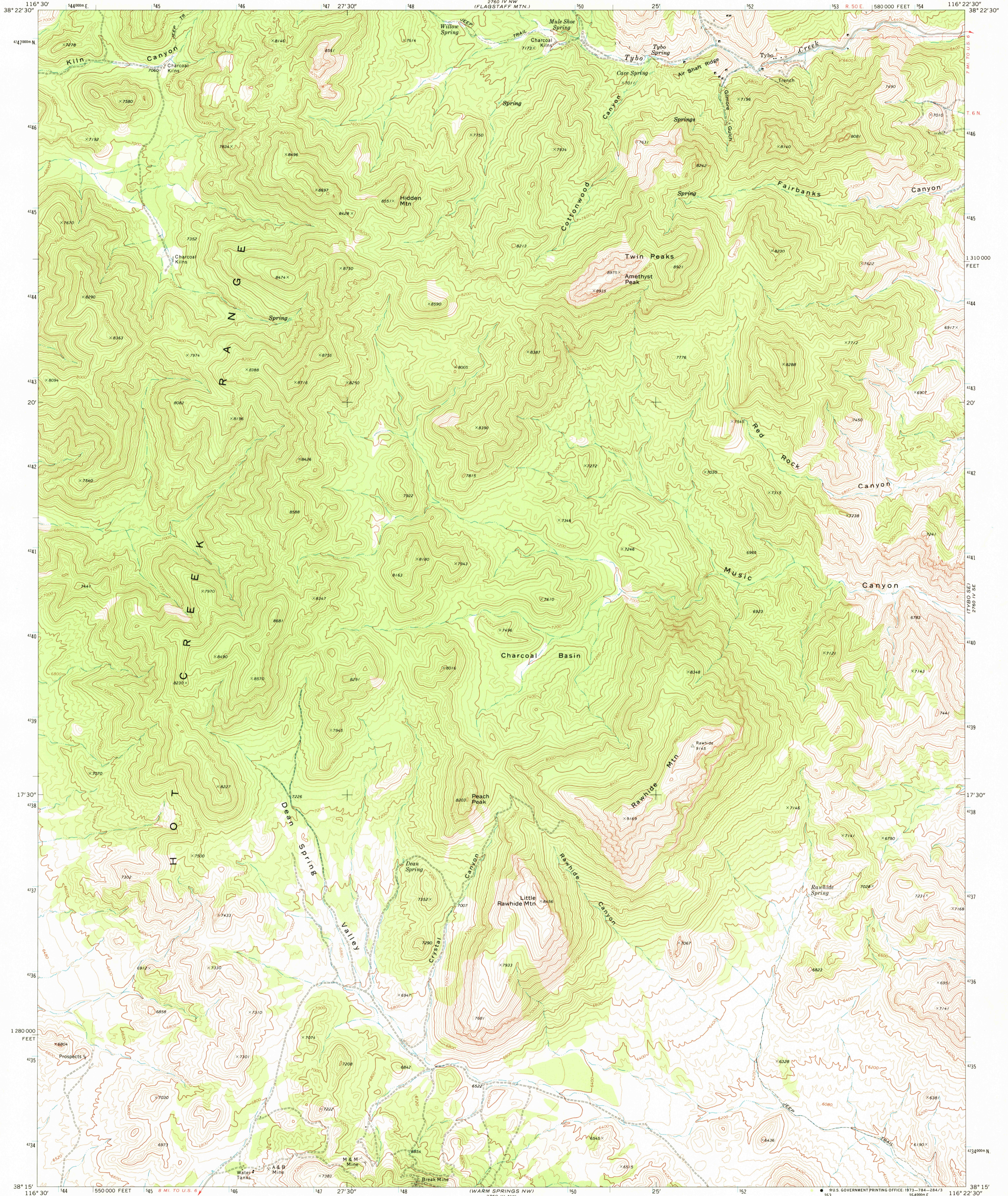
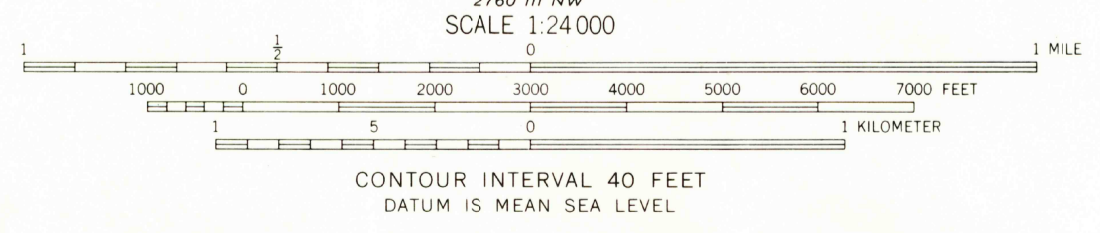
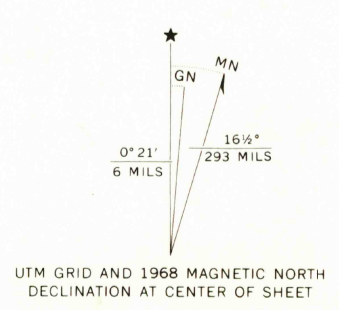


2760 IV NE  
BLUE JAY SPRING



Mapped, edited, and published by the Geological Survey  
in cooperation with the Atomic Energy Commission  
Control by USGS and USC&GS  
Topography by photogrammetric methods from aerial  
photographs taken 1967. Field checked 1968  
Polyconic projection. 1927 North American datum  
10,000-foot grid based on Nevada coordinate system, central zone  
1000-meter Universal Transverse Mercator grid ticks,  
zone 11, shown in blue  
Where omitted, land lines have not been established  
or are not shown because of insufficient data



**ROAD CLASSIFICATION**

Primary highway, hard surface	Light-duty road, hard or improved surface
Secondary highway, hard surface	Unimproved road
Interstate Route	U.S. Route
	State Route



THIS MAP COMPLIES WITH NATIONAL MAP ACCURACY STANDARDS  
FOR SALE BY U. S. GEOLOGICAL SURVEY, DENVER, COLORADO 80225, OR WASHINGTON, D. C. 20242  
A FOLDER DESCRIBING TOPOGRAPHIC MAPS AND SYMBOLS IS AVAILABLE ON REQUEST

TYBO, NEV.  
SW 1/4 TYBO 15' QUADRANGLE  
N3815—W1622.5/7.5  
1968

AMS 2760 IV SW—SERIES V696

Blue Jay Spring  
2500