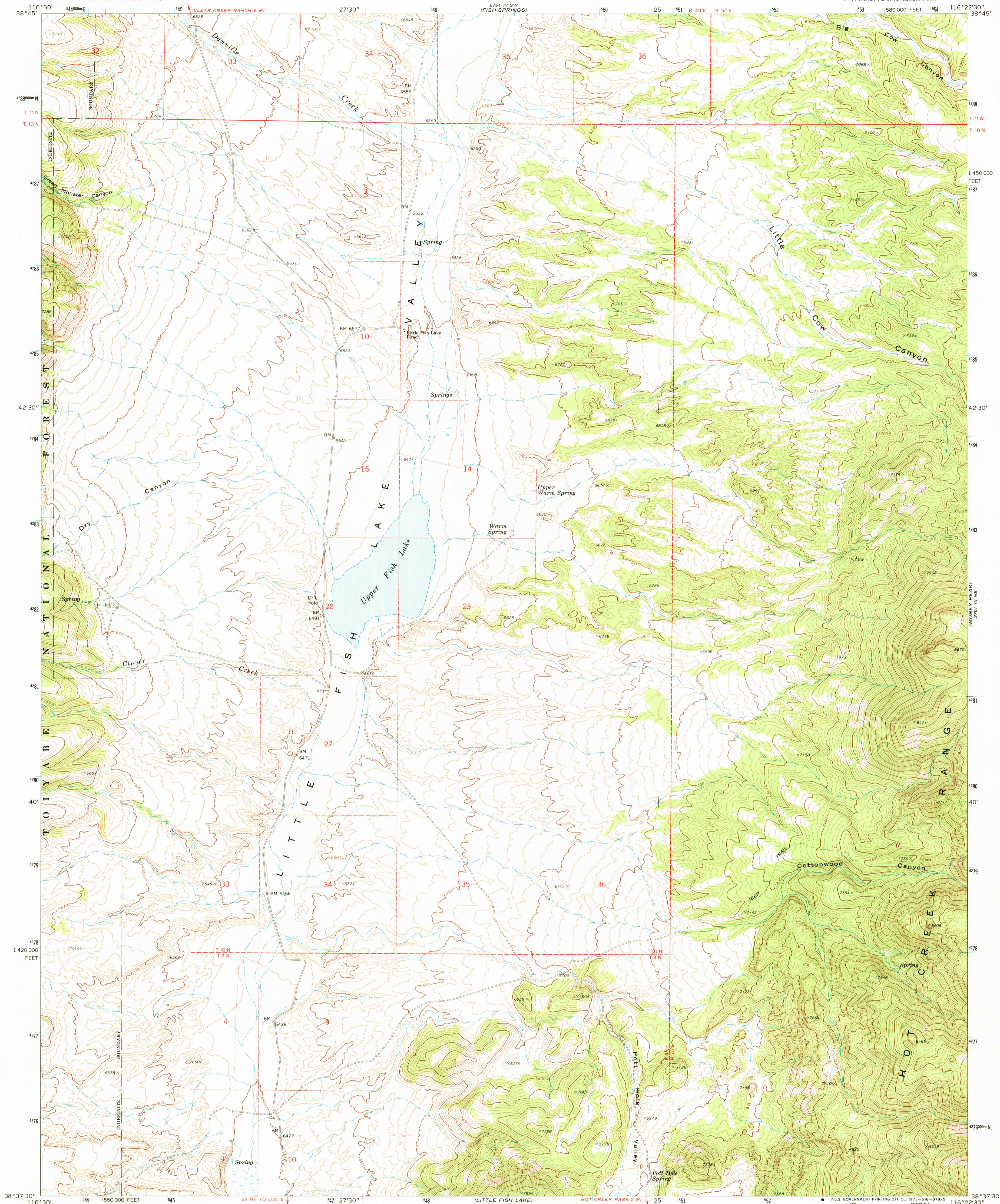
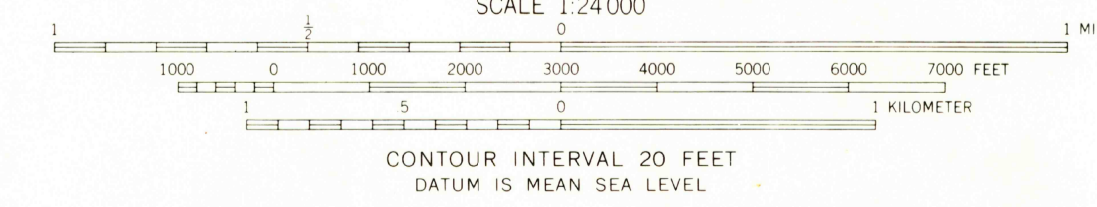
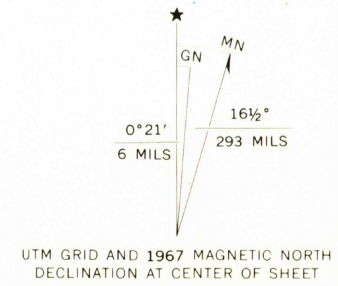


271 1/4 SE
FISH SPRINGS 5E



Mapped, edited, and published by the Geological Survey in cooperation with the Atomic Energy Commission Control by USGS and USC&GS
Topography by photogrammetric methods from aerial photographs taken 1967. Field checked 1967
Polyconic projection. 1927 North American datum 10,000-foot grid based on Nevada coordinate system, central zone 1000-meter Universal Transverse Mercator grid ticks, zone 11, shown in blue
Fine red dashed lines indicate selected fence lines
Where omitted, land lines have not been established



ROAD CLASSIFICATION

Primary highway, hard surface	Light duty road, hard or improved surface
Secondary highway, hard surface	Unimproved road
Interstate Route	U. S. Route
State Route	

THIS MAP COMPLIES WITH NATIONAL MAP ACCURACY STANDARDS
FOR SALE BY U.S. GEOLOGICAL SURVEY, DENVER, COLORADO 80225, OR WASHINGTON, D. C. 20242
A FOLDER DESCRIBING TOPOGRAPHIC MAPS AND SYMBOLS IS AVAILABLE ON REQUEST

UPPER FISH LAKE, NEV.
NW/4 MOREY PEAK 15' QUADRANGLE
N3837.5-W11622.5/7.5

1967
AMS 2761 III NW-SERIES V896
MAY 10 1973

HOBBLE CANYON
11000
2500