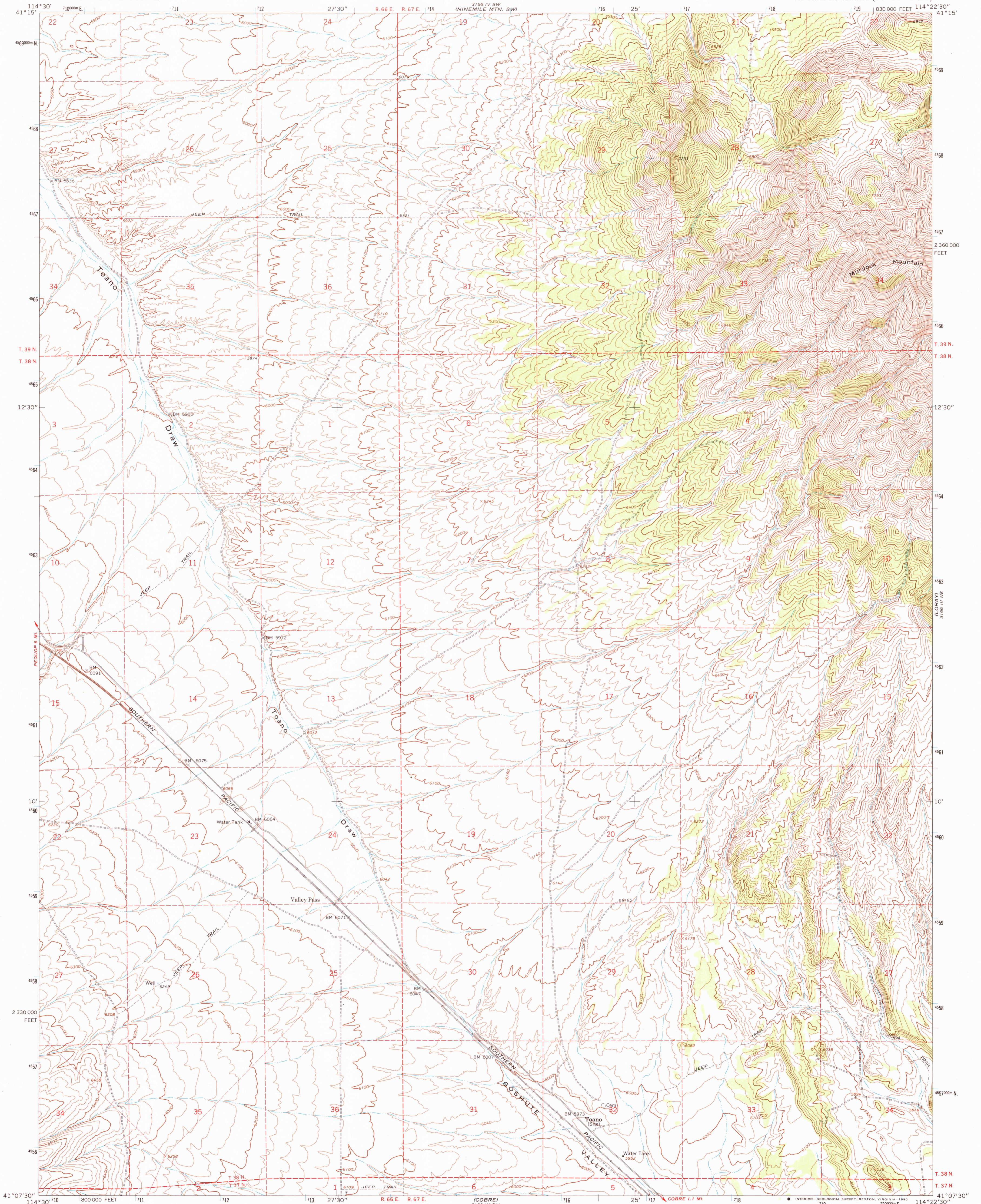
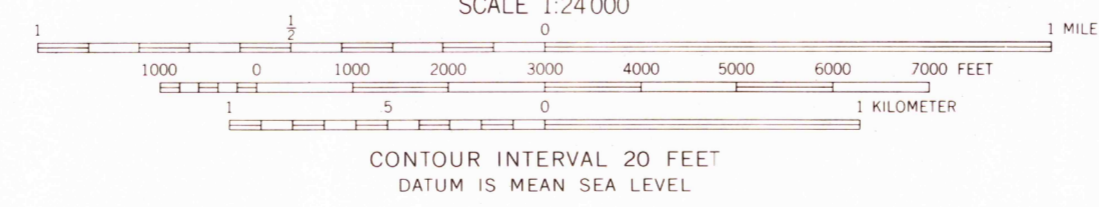
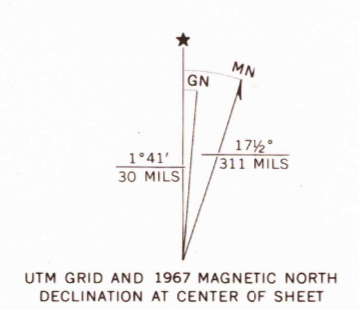


MONTELEONE CANYON



Mapped, edited, and published by the Geological Survey
Control by USGS and USC&GS
Topography by photogrammetric methods from aerial
photographs taken 1966. Field checked 1967
Polyconic projection. 1927 North American datum
10,000-foot grid based on Nevada coordinate system, east zone
1000-meter Universal Transverse Mercator grid ticks,
zone 11, shown in blue
Fine red dashed lines indicate selected fence lines
Map photospected 1976
No major culture or drainage changes observed



ROAD CLASSIFICATION
Light-duty ————— Unimproved dirt - - - - -

NEVADA
QUADRANGLE LOCATION
SEP 19 1990
REC'D FILE COPY

VALLEY PASS, NEV.
N4107.5-W11422.5/7.5
1967
PHOTOINSPECTED 1976
AMS 3166 III NW—SERIES V896

THIS MAP COMPLIES WITH NATIONAL MAP ACCURACY STANDARDS
FOR SALE BY U.S. GEOLOGICAL SURVEY, DENVER, COLORADO 80225, OR RESTON, VIRGINIA 22092
A FOLDER DESCRIBING TOPOGRAPHIC MAPS AND SYMBOLS IS AVAILABLE ON REQUEST