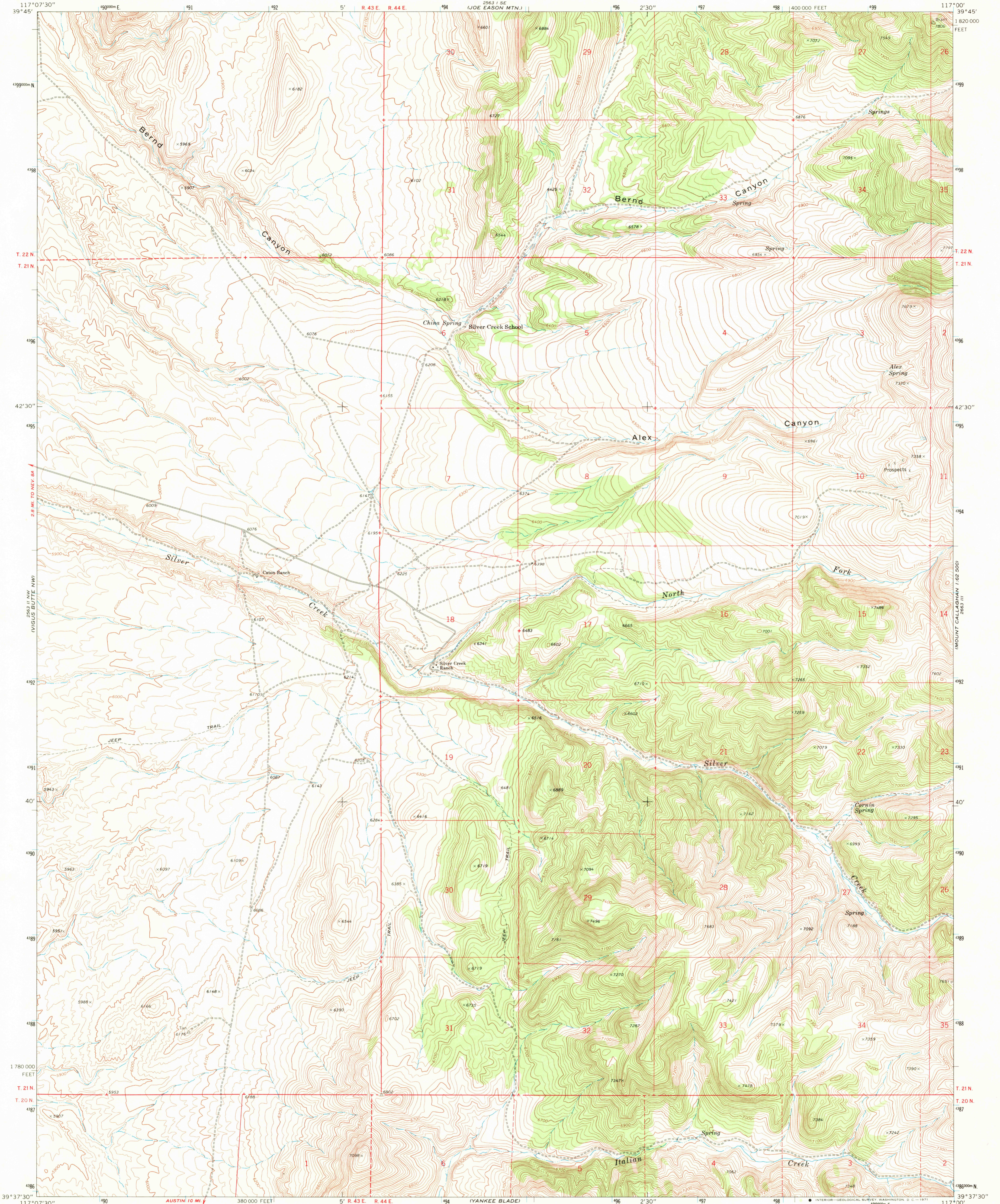


UNITED STATES  
DEPARTMENT OF THE INTERIOR  
GEOLOGICAL SURVEY

VIGUS BUTTE NE QUADRANGLE  
NEVADA—LANDER CO.  
7.5 MINUTE SERIES (TOPOGRAPHIC)

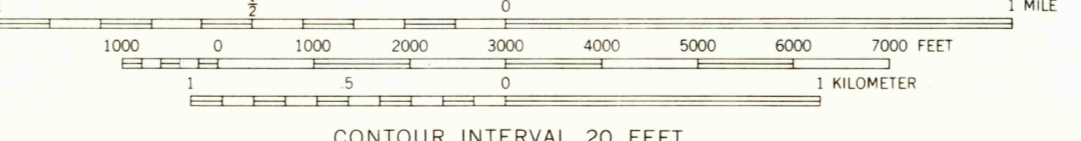
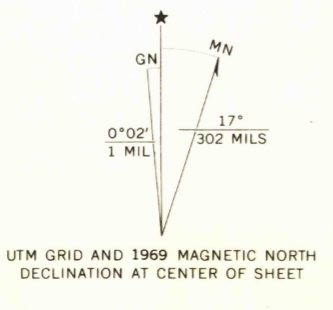


Mapped, edited, and published by the Geological Survey

Control by USGS and USC&GS  
Topography by photogrammetric methods from aerial  
photographs taken 1966. Field checked 1969

Polycyclic projection. 1927 North American datum  
10,000-foot grid based on Nevada coordinate system, central zone  
1000-meter Universal Transverse Mercator grid ticks,  
zone 11, shown in blue

Fine red dashed lines indicate selected fence lines  
Where omitted, land lines have not been established  
or are not shown because of insufficient data



CONTOUR INTERVAL 20 FEET  
DATUM IS MEAN SEA LEVEL



ROAD CLASSIFICATION  
Light-duty road, all weather, Unimproved road, fair or dry weather  
improved surface weather

THIS MAP COMPLIES WITH NATIONAL MAP ACCURACY STANDARDS  
FOR SALE BY U.S. GEOLOGICAL SURVEY, DENVER, COLORADO 80225, OR WASHINGTON, D. C. 20242  
A FOLDER DESCRIBING TOPOGRAPHIC MAPS AND SYMBOLS IS AVAILABLE ON REQUEST

USGS  
HISTORICAL FILE  
TOPOGRAPHIC DIVISION

VIGUS BUTTE NE, NEV.  
N3937.5—W11700/7.5  
1969  
AMS 2563 II NE—SERIES V896

SEP 16 1971

2170