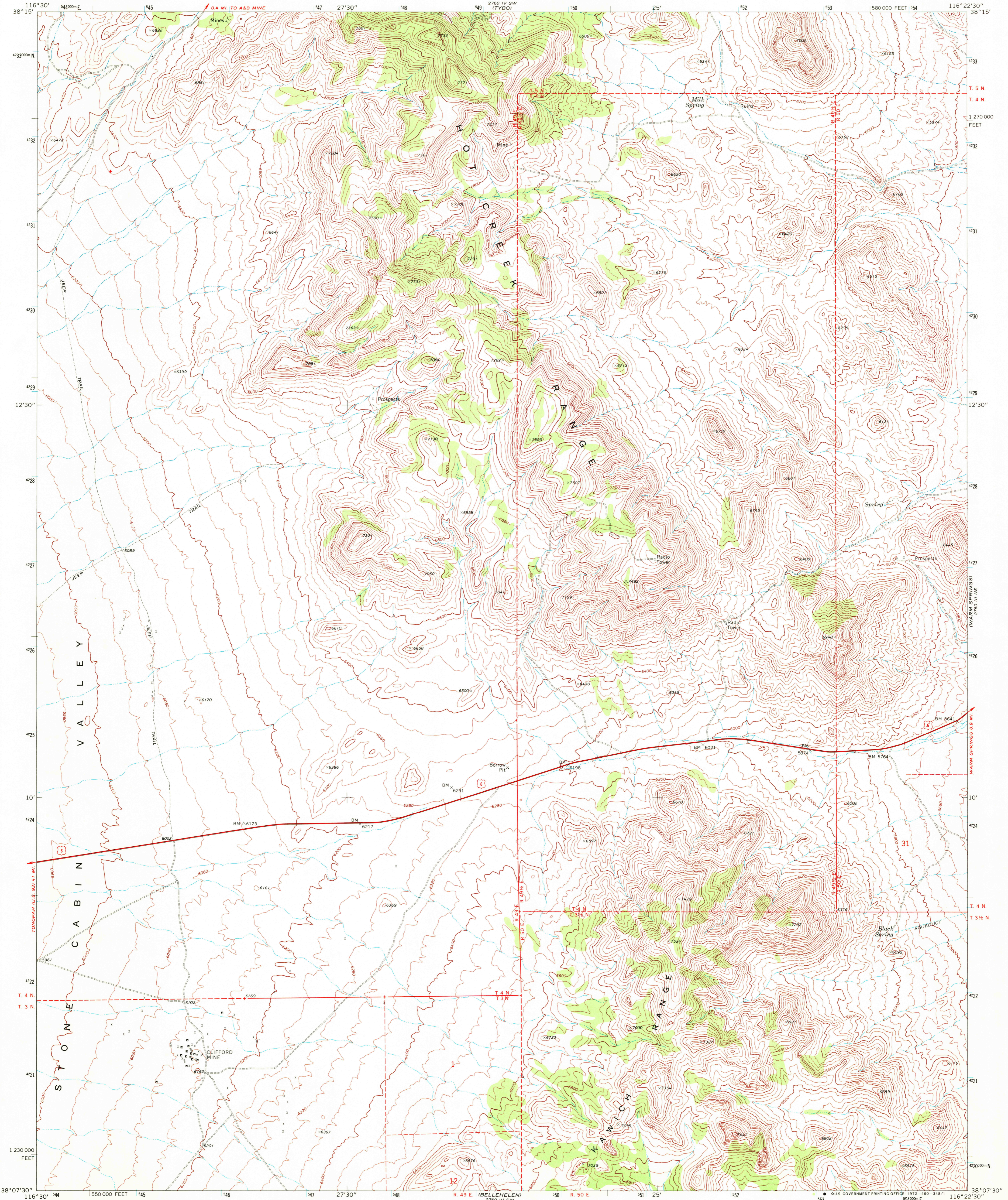
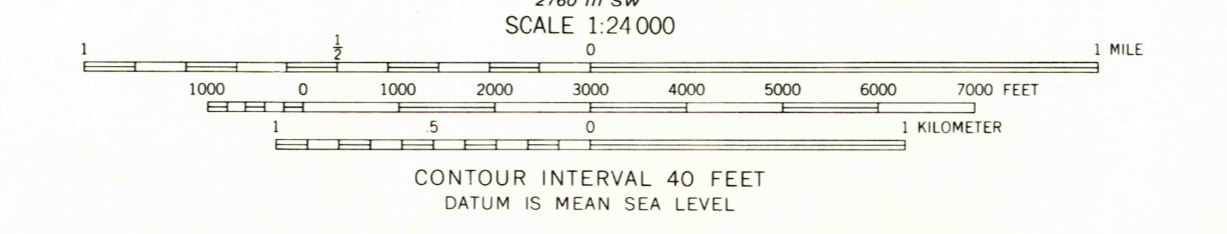
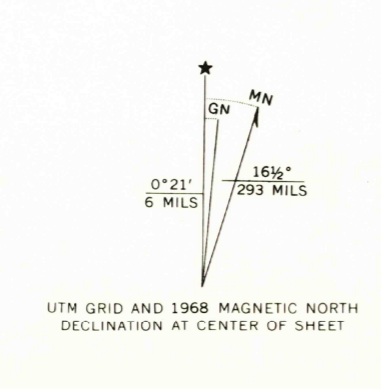


2760 III SE
1760 SEI



Mapped, edited, and published by the Geological Survey in cooperation with the Atomic Energy Commission Control by USGS and USC&GS
Topography by photogrammetric methods from aerial photographs taken 1967. Field checked 1968
Polyconic projection. 1927 North American datum 10,000-foot grid based on Nevada coordinate system, central zone 1000-meter Universal Transverse Mercator grid ticks, zone 11, shown in blue
Where omitted, land lines have not been established or are not shown because of insufficient data



ROAD CLASSIFICATION

Primary highway, hard surface	Light-duty road, hard or improved surface
Secondary highway, hard surface	Unimproved road

Interstate Route U.S. Route State Route

QUADRANGLE LOCATION

NEVADA

WARM SPRINGS NW, NEV.
NW/4 WARM SPRINGS 15' QUADRANGLE
N3807.5 - W11622.5/7.5

1968
AMS 2760 III NW - SERIES V896

DEC 1 3 1972

USGS HISTORICAL FILE TOPOGRAPHIC DIVISION

THIS MAP COMPLIES WITH NATIONAL MAP ACCURACY STANDARDS
FOR SALE BY U.S. GEOLOGICAL SURVEY, DENVER, COLORADO 80225, OR WASHINGTON, D.C. 20242
A FOLDER DESCRIBING TOPOGRAPHIC MAPS AND SYMBOLS IS AVAILABLE ON REQUEST

WARM SPRINGS SEI
R.M. 11
300