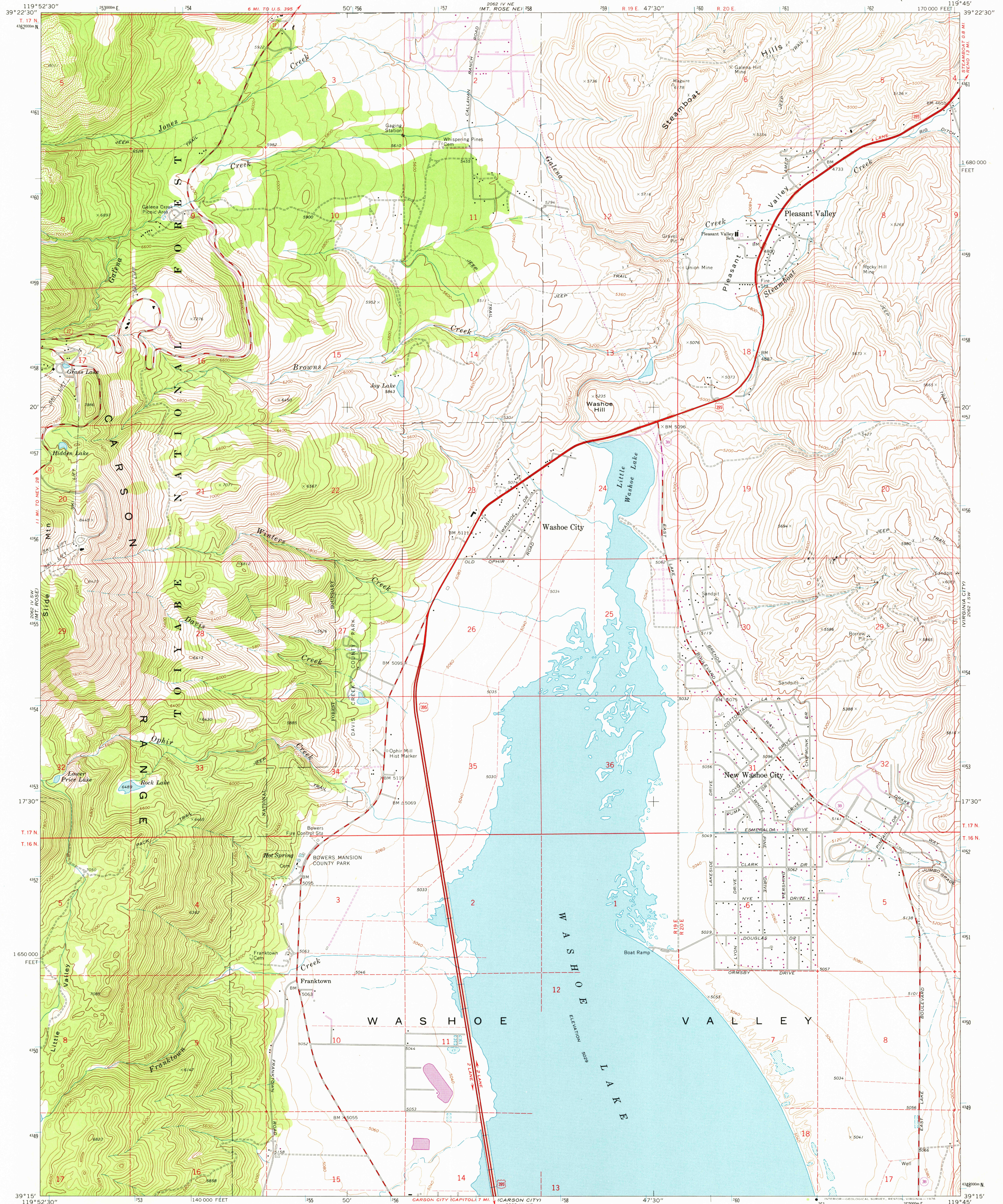


UNITED STATES
DEPARTMENT OF THE INTERIOR
GEOLOGICAL SURVEY

WASHOE CITY QUADRANGLE
NEVADA—WASHOE CO.
7.5 MINUTE SERIES (TOPOGRAPHIC)



Mapped, edited, and published by the Geological Survey

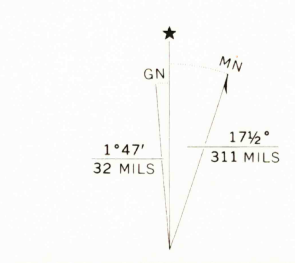
Control by USGS and NOS/NOAA

Topography by photogrammetric methods from aerial
photographs taken 1966. Field checked 1968

Polyconic projection. 1927 North American datum
10,000-foot grid based on Nevada coordinate system, west zone
1000-metre Universal Transverse Mercator grid ticks,
zone 11, shown in blue

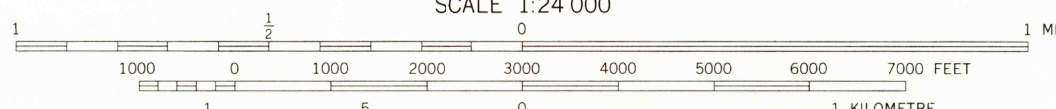
Fine red dashed lines indicate selected fence lines

Revisions shown in purple compiled from aerial photographs
taken 1974. This information not field checked



UTM GRID AND 1974 MAGNETIC NORTH
DECLINATION AT CENTER OF SHEET

SCALE 1:24 000



CONTOUR INTERVAL 40 FEET
DOTTED LINES REPRESENT 20-FOOT CONTOURS
NATIONAL GEODETIC VERTICAL DATUM OF 1929

THIS MAP COMPLIES WITH NATIONAL MAP ACCURACY STANDARDS
FOR SALE BY U.S. GEOLOGICAL SURVEY, DENVER, COLORADO 80225 OR RESTON, VIRGINIA 22092
A FOLDER DESCRIBING TOPOGRAPHIC MAPS AND SYMBOLS IS AVAILABLE ON REQUEST



QUADRANGLE LOCATION

ROAD CLASSIFICATION	
Heavy-duty	Light-duty
Medium-duty	Unimproved dirt
U.S. Route	State Route

USGS
Historical File
Topographic Division

WASHOE CITY, NEV.
N3915-W11945/7.5

1968
PHOTOREVISED 1974
AMS 2062 IV SE-SERIES V896

APR 0 1 1976