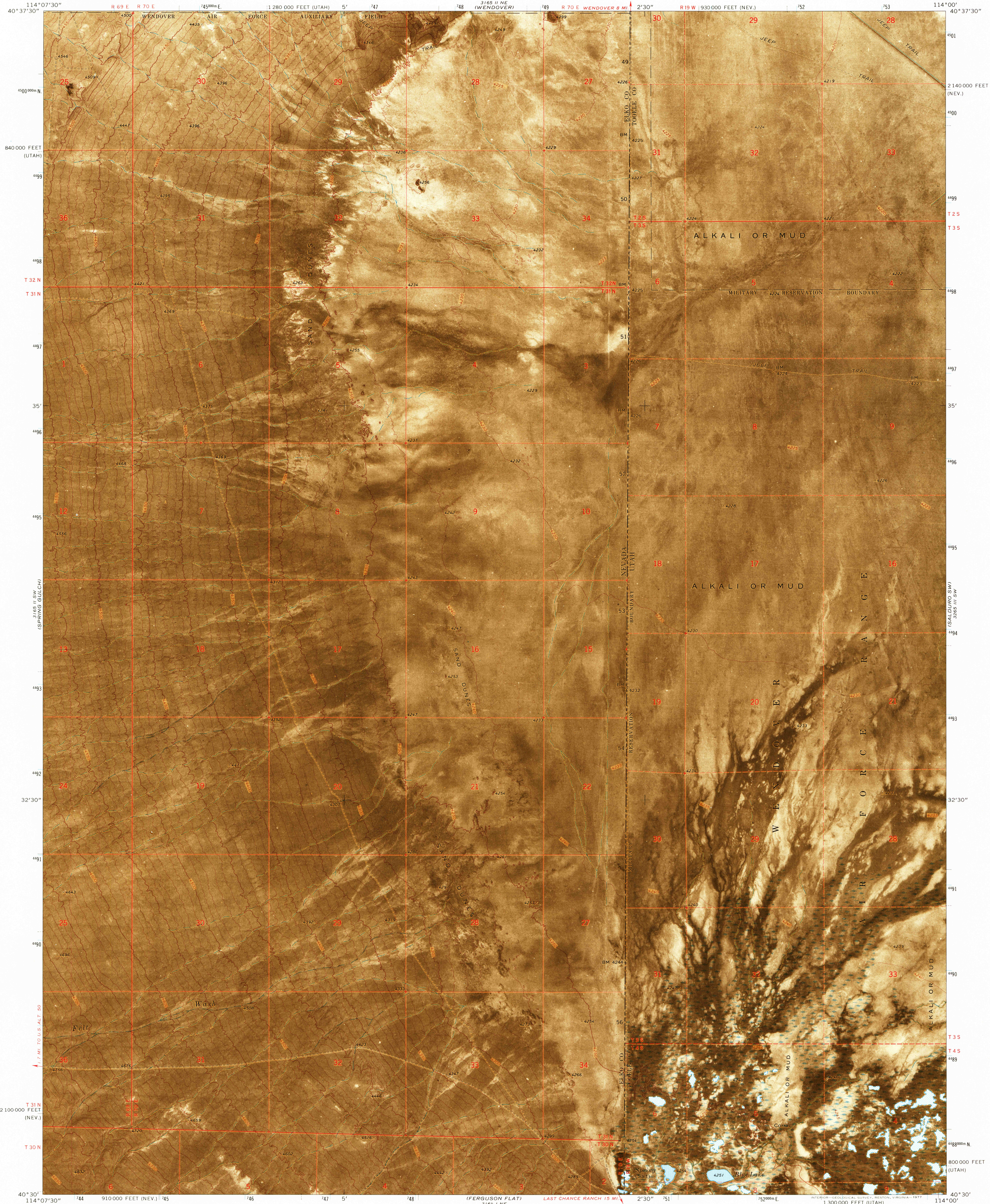


UNITED STATES
DEPARTMENT OF THE INTERIOR
GEOLOGICAL SURVEY

WENDOVER SE QUADRANGLE
NEVADA-UTAH
7.5 MINUTE SERIES ORTHOPHOTOMAP (TOPOGRAPHIC)

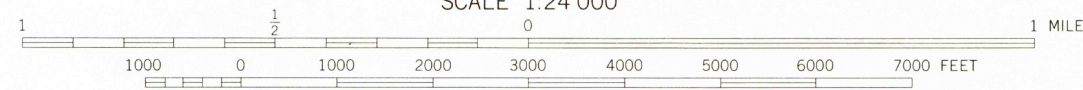
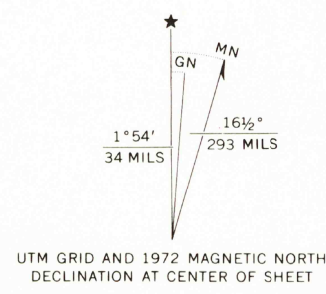


Mapped, edited, and published by the Geological Survey

Control by USGS and NOS/NOAA

Topography by photogrammetric methods from aerial
photographs taken 1970. Field checked 1972
Orthophotograph from aerial photographs taken 1972

Projection: Nevada coordinate system, east zone
(transverse Mercator)
10,000-foot grid ticks based on Nevada coordinate system, east zone
and Utah coordinate system, central zone
1000-metre Universal Transverse Mercator grid ticks,
zone 11, shown in blue. 1927 North American datum



CONTOUR INTERVAL 10 FEET
DOTTED LINES REPRESENT 5-FOOT CONTOURS
NATIONAL GEODETIC VERTICAL DATUM OF 1929

THIS MAP COMPLIES WITH NATIONAL MAP ACCURACY STANDARDS
FOR SALE BY U. S. GEOLOGICAL SURVEY, DENVER, COLORADO 80225, OR RESTON, VIRGINIA 22092
A FOLDER DESCRIBING TOPOGRAPHIC MAPS AND SYMBOLS IS AVAILABLE ON REQUEST

ROAD CLASSIFICATION
Primary highway, hard surface ———— Light-duty road, hard or improved surface ————
Secondary highway, hard surface ———— Unimproved road ————
Interstate Route ———— U. S. Route ———— State Route ————



FEB 1 6 1978
WENDOVER SE, NEV.—UTAH
N4030—W11400/7.5

1972
AMS 3165 II SE—SERIES V096

USGS
HISTORICAL FILE
TOPOGRAPHIC DIVISION

3302